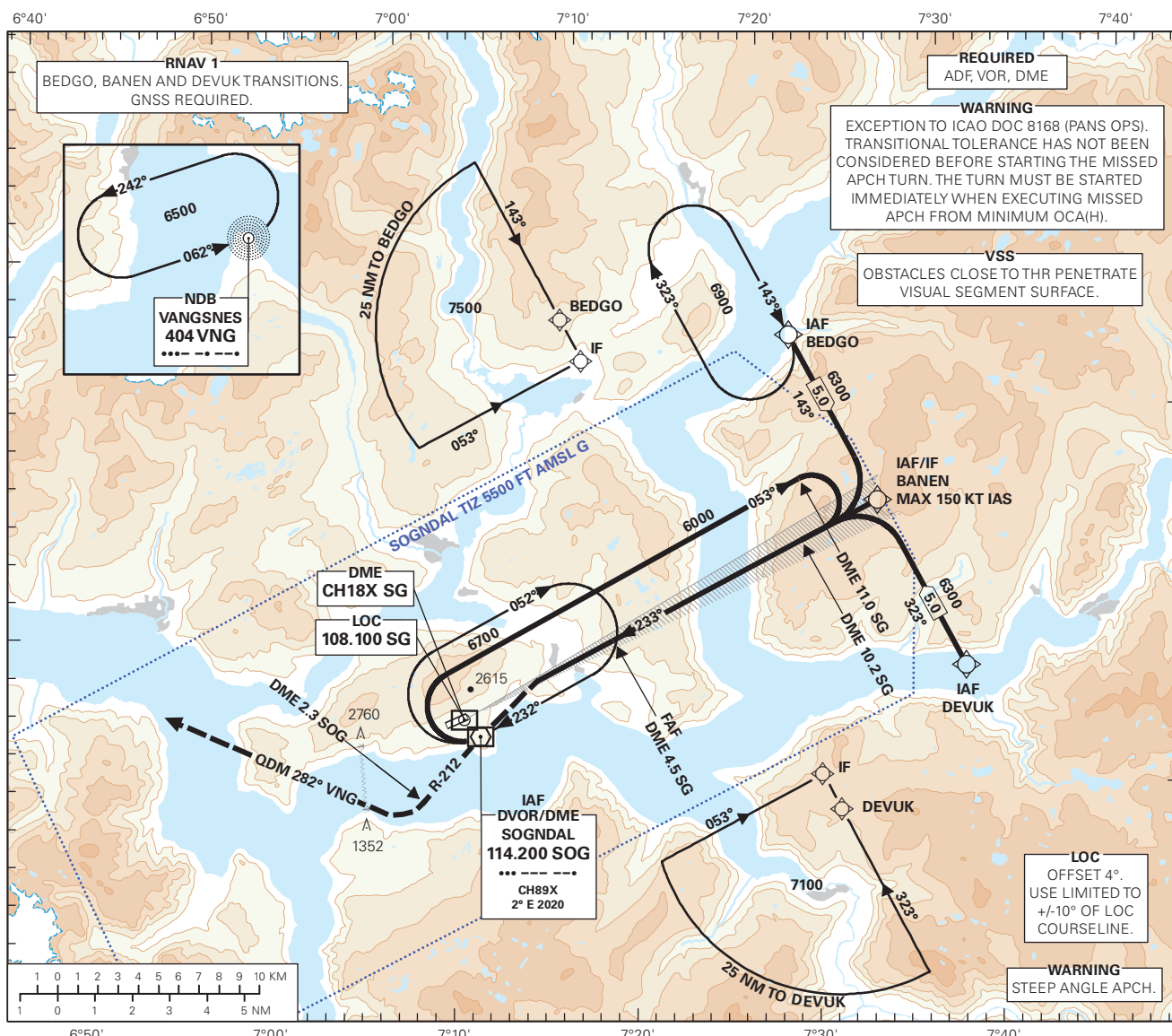


INSTRUMENT APPROACH CHART - ICAO PLAN VIEW SCALE: 1:350 000

<p>MSA 25 NM SOG</p>	ATIS: 131.250	AD ELEV: 1633		
	AFIS: 119.300	THR ELEV: 1633	DIST IN NM	
	VDF: 119.300	HGT RELATED TO THR RWY 24	ELEV, ALT AND HGT IN FT	
	CIRCLING HGT RELATED TO AD ELEV		TRANSITION ALTITUDE	
BEARINGS ARE MAGNETIC - VAR 2° E (2020)			7000	

SOGNDAL
HAUKÅSEN
ILS RWY 24



DIST TO SG	10	9	8	7	6	5	4	3
ALT (HGT)	-	-	-	-	-	-	3371 (1738)	2940 (1307)

MISSED APCH:

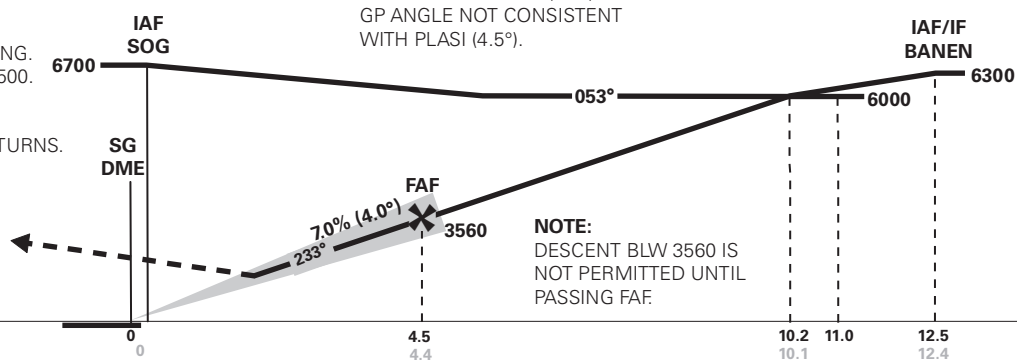
TURN LEFT IMMEDIATELY DCT SOG. CONTINUE ON R-212 TO DME 2.3 AFTER SOG. INTERCEPT AND PROCEED ON QDM 282° VNG TO VNG. ENTER VNG HLDG CLIMBING TO 6500.

NOTE:

MAX 130 KT IAS IN MISSED APCH TURNS.

PROCEDURE OFFSET: 4°

ILS RDH 38



DME SG	→									
THR	→									
CAT OF ACFT	A	B	C	D	FINAL APCH					
OCA(H) STRAIGHT - IN	2523 (890)	-	-	-	SPEED	KT	70	90	100	120
	-	-	-	-	TIME	MIN:SEC	-	-	-	-
CIRCLING	2523 (890)	-	-	-	ROD	FT/MIN	495	640	710	850

NOTE: CIRCLING S OF AD ONLY.

CHANGES: MAGNETIC VARIATION, SOG VOR DECLINATION, ATIS FREQUENCY.