

AERODROME GROUND
MOVEMENT CHART

APRON ELEV 674

OSLO, GARDERMOEN
NORWAY

COM

ATIS (ARR) 126.130 MHZ
ATIS (DEP) 127.155 MHZ
CLR (E) 121.930 MHZ
CLR (W) 121.680 MHZ
APRON 121.855 MHZ
GND (E) 121.905 MHZ
GND (W) 121.605 MHZ
TWR 257.800 MHZ
TWR (E) 120.105 MHZ
TWR (W) 118.305 MHZ

NOTES - REMARKS

TAXIING
All turns made by aircraft with wingspan 36 M or greater must be made with judgemental oversteering.

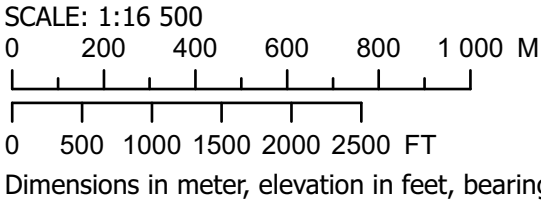
WING SPAN LIMITATIONS
Following TWYs has max wingspan 36 M:
- TWY between N and Hangar 9
- TWY C north of stand 329
- TWY C3
- TWY C4
- TWY K1
- TWY K2
- TWY L BLUE
- TWY L ORANGE

Runway strength, REF AD 2.12
Apron surface and strength, REF AD 2.8
Declared distances, REF AD 2.13
Taxiway width, surface and strength, REF AD 2.8

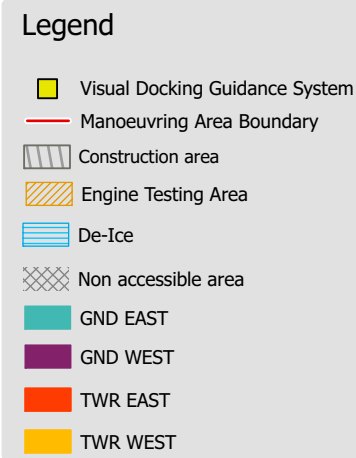
Angled TWY. Difficult to see traffic on RWY 01L.

TWY V leading directly to a RWY intersection. Caution must be exercised when approaching the holding point A6.

Angled TWY. Difficult to see traffic on final.



VAR 4° E 2020
Annual change 0.21° E



CHANGES: NEW FREQUENCIES.