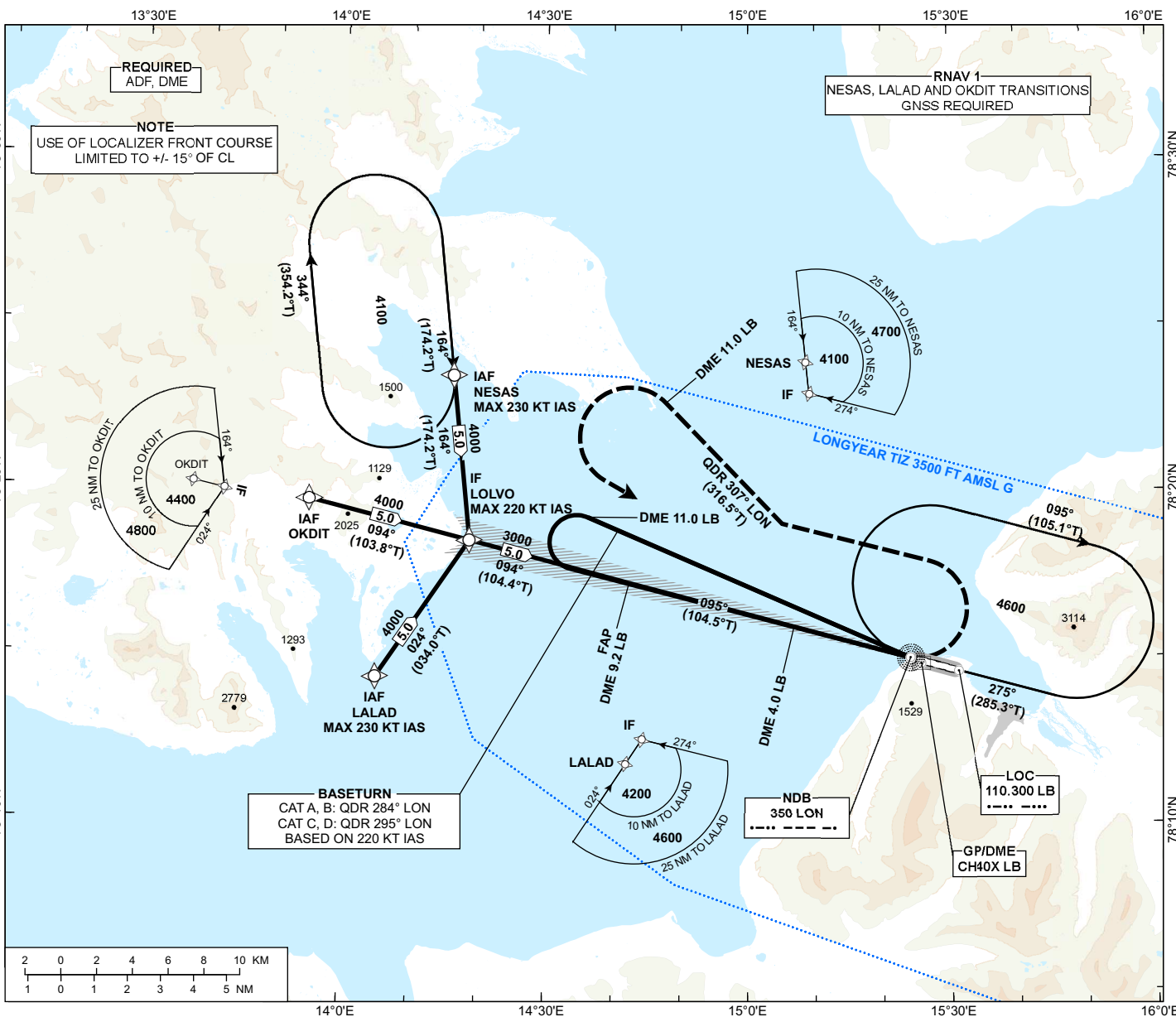


INSTRUMENT APPROACH CHART - ICAO

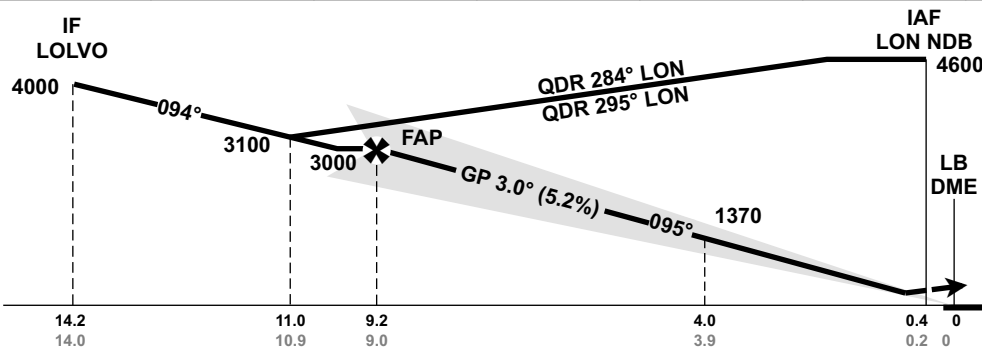
**SVALBARD
LONGYEAR
ILS RWY 09**

AFIS: 118.100 119.850	AD ELEV: 94
VDF AVBL.	THR ELEV: 71
	HGT RELATED TO THR 09
	CIRCLING HGT RELATED TO AD ELEV
DIST IN NM. ELEV, ALT AND HGT IN FT	
SCALE 1:350 000	VAR 10° E (2020)

TRANSITION ALTITUDE
5000



DIST TO LB	9	8	7	6	5	4	3	2
ALT (HGT)	-	2685 (2614)	2355 (2282)	2025 (1953)	1695 (1625)	1370 (1298)	1045 (974)	720 (651)



MISSED APPROACH:
TURN LEFT TO INTERCEPT AND PROCEED ON QDR 307° LON. AT DME 11.0 LB TURN LEFT DCT LON. ENTER LON HOLDING CLIMBING TO 4600.

NOTE:
MAX SPEED DURING MISSED APCH TURN:
*CAT B MAX IAS 130 KT
*CAT C MAX IAS 160 KT
*CAT D MAX IAS 185 KT

ILS RDH 48

← DME (LB)
← THR

CAT OF ACFT		A	B	C	D
OCA (H) STRAIGHT-IN	CAT I	486 (415)	521 (450)	631 (560)	786 (715)
		-	-	-	-
CIRCLING		930 (836)	2040 (1946)	3560 (3466)	

NOTE: CIRCLING N OF AD ONLY.

CHANGES: NEW RWY ID. EDITORIALS.

ATS AIRSPACE CLASSIFICATION: REF ENR 1.4