

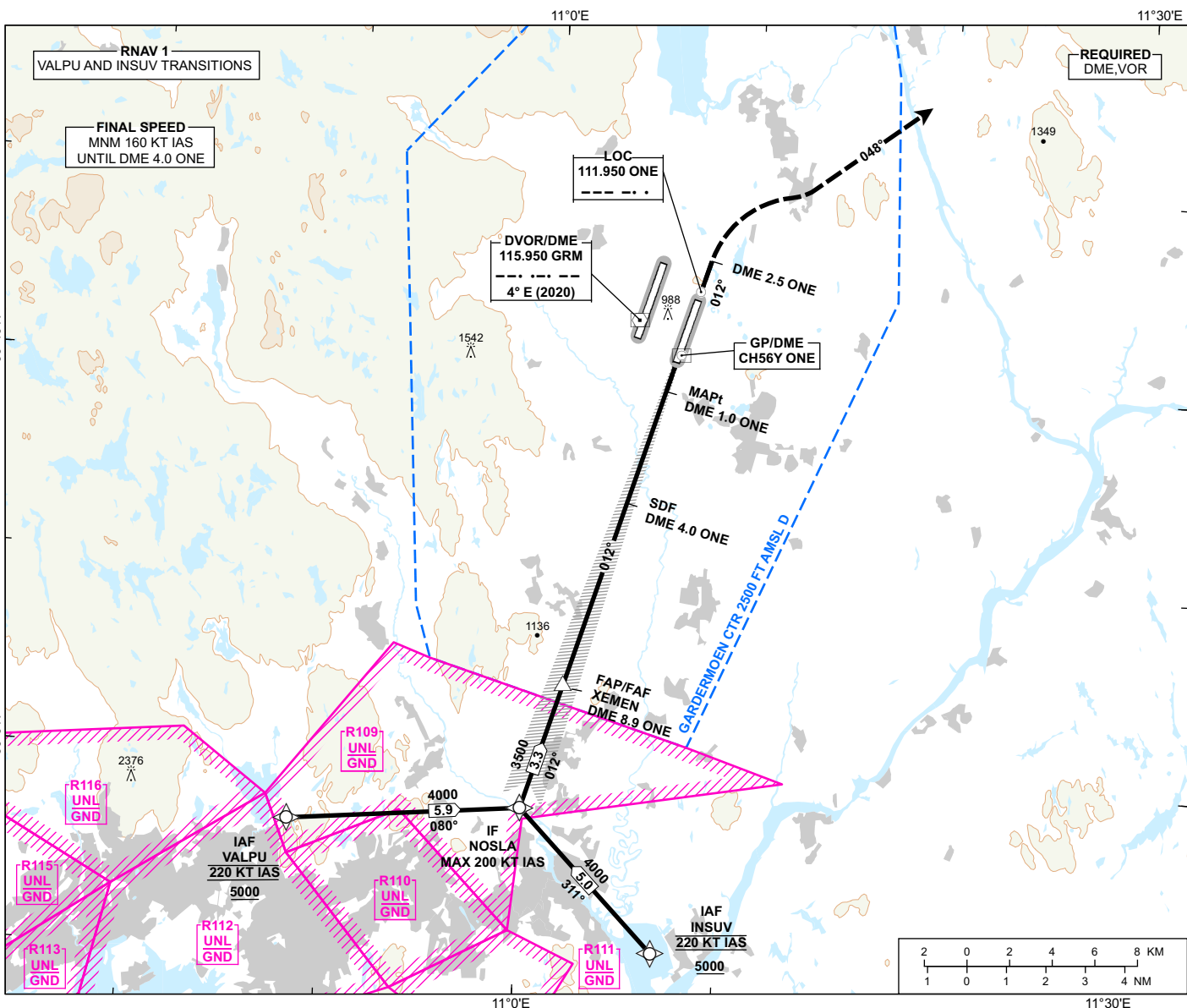
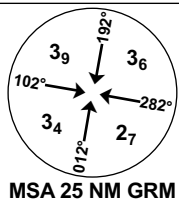
**INSTRUMENT APPROACH CHART - ICAO**

**OSLO  
GARDERMOEN**

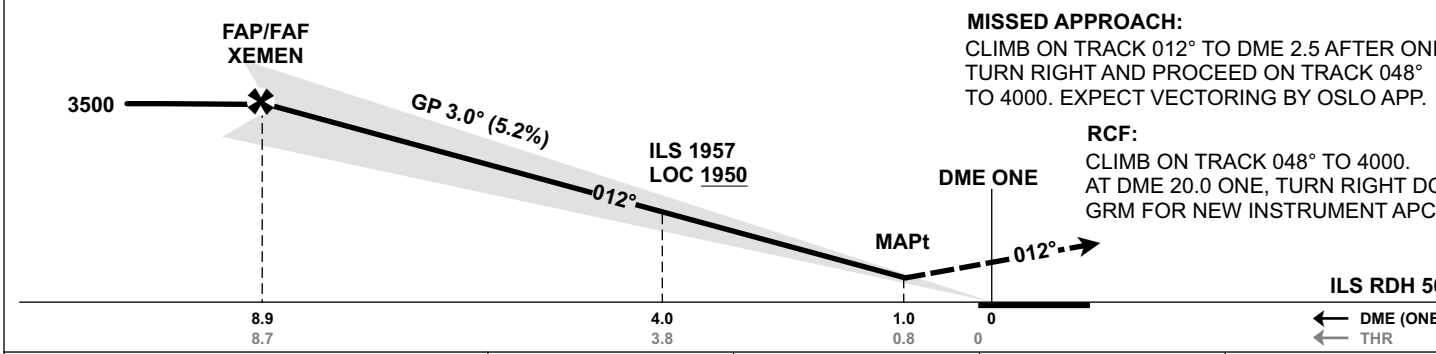
**ILS or LOC RWY 01R CAT II & III**

**TRANSITION ALTITUDE  
7000**

ATIS: 126.130	AD ELEV: 682
APP: 118.480 120.455	THR ELEV: 671
DIR: 136.405 (119.980)	HGT RELATED TO THR 01R
FIN: 128.905	CIRCLING HGT RELATED TO AD ELEV
TWR: 120.105 (123.330)	DIST IN NM. ELEV, ALT AND HGT IN FT
GND: 121.905	SCALE 1:300 000 VAR 4° E (2020)



DIST TO ONE	9	8	7	6	5	4	3	2
ALT (HGT)	-	3220 (2549)	2900 (2229)	2590 (1919)	2270 (1599)	1950 (1279)	1630 (959)	1310 (639)



CAT OF ACFT		A	B	C	D
OCA (H) STRAIGHT- IN	CAT I	850 (179)	862 (191)	870 (199)	881 (210)
	CAT II	(50)	(60)	(72)	(84)
	LOC	990 (319)			
CIRCLING		1280 (598)	1530 (848)	1630 (948)	

NOTE: CIRCLING E OF RWY ONLY.

CHANGES: FREQUENCIES.

ATS AIRSPACE CLASSIFICATION: REF ENR 1.4