

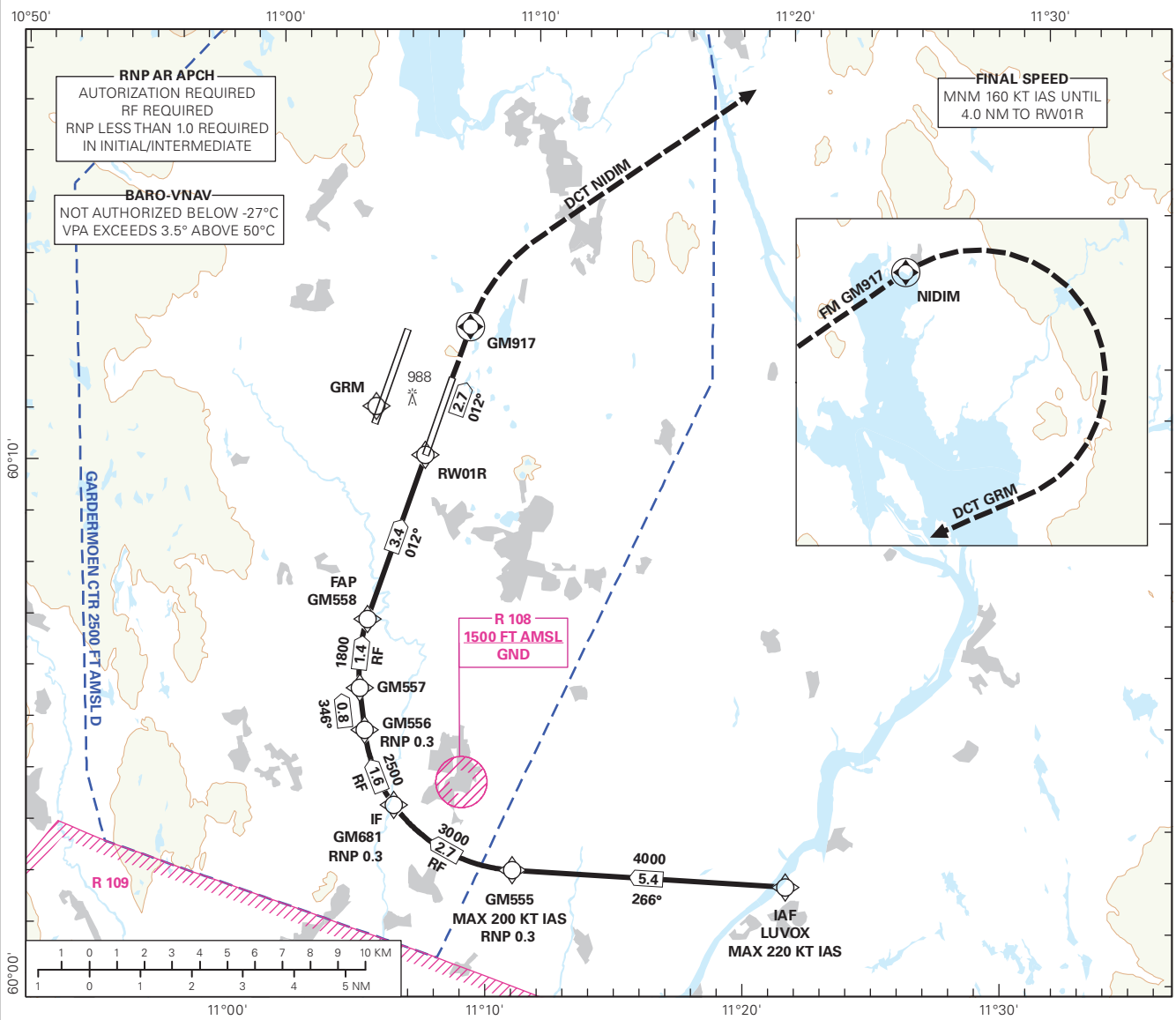
**INSTRUMENT APPROACH CHART - ICAO PLAN VIEW SCALE:1:250 000**

OSLO

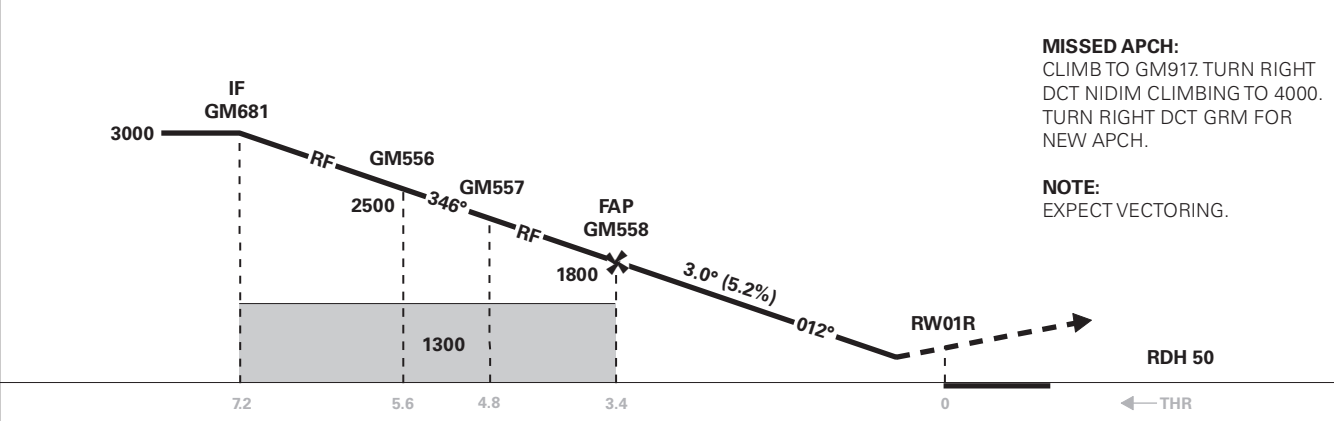
**GARDERMOEN  
RNP E RWY 01R (AR)**

**TRANSITION ALTITUDE  
7000**

|   |  |  |                         |
|---|--|--|-------------------------|
| <div style="border: 1px solid black; border-radius: 50%; width: 40px; height: 40px; display: flex; align-items: center; justify-content: center; margin: 0 auto;"> <span style="font-size: 24px; font-weight: bold;">3<sub>9</sub></span> </div> <p>MSA 25 NM ARP</p> | ATIS: 126.130                          | AD ELEV: 682                             |                         |
|   | APP: 118.480 120.455                   | THR ELEV: 671                            | DIST IN NM              |
|   | DIR: 136.405 (119.980)<br>FIN: 128.905 | HGT RELATED TO THR RWY 01R               | ELEV, ALT AND HGT IN FT |
|   | TWR: 120.105 (123.330)                 | CIRCLING HGT RELATED TO AD ELEV          |                         |
|   | GND: 121.905                           | BEARINGS ARE MAGNETIC - VAR: 4° E (2020) |                         |



|                 |   |   |   |   |   |   |   |   |
|-----------------|---|---|---|---|---|---|---|---|
| DIST TO RWY 01R | 9 | 8 | 7 | 6 | 5 | 4 | 3 | 2 |
| ALT (HGT)       | - | - | - | - | - | - | - | - |



| CAT OF ACFT          | A               |            |            |            | B          |                 | C         |            | D         |            |
|----------------------|-----------------|------------|------------|------------|------------|-----------------|-----------|------------|-----------|------------|
|                      | RNP 0.3 (2.5%*) | 1007 (336) | 1027 (356) | 1046 (375) | 1065 (394) | RNP 0.3 (5.0%*) | 955 (284) | 980 (309)  | 998 (327) | 1021 (350) |
| OCA(H) STRAIGHT - IN |                 |            |            |            |            |                 |           |            |           |            |
| CIRCLING             |                 | 1280 (598) |            | 1530 (848) |            |                 |           | 1630 (948) |           |            |

NOTE: CIRCLING E OF AD ONLY. \*MNM MISSED APCH CLIMB GRADIENT.

ATS AIRSPACE CLASSIFICATION: REF ENR 1.4.

CHANGES: FREQUENCIES, RNP VALUE AT GM555 AND GM681.