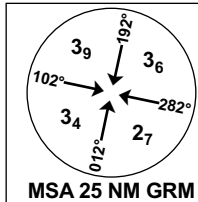


INSTRUMENT APPROACH CHART - ICAO

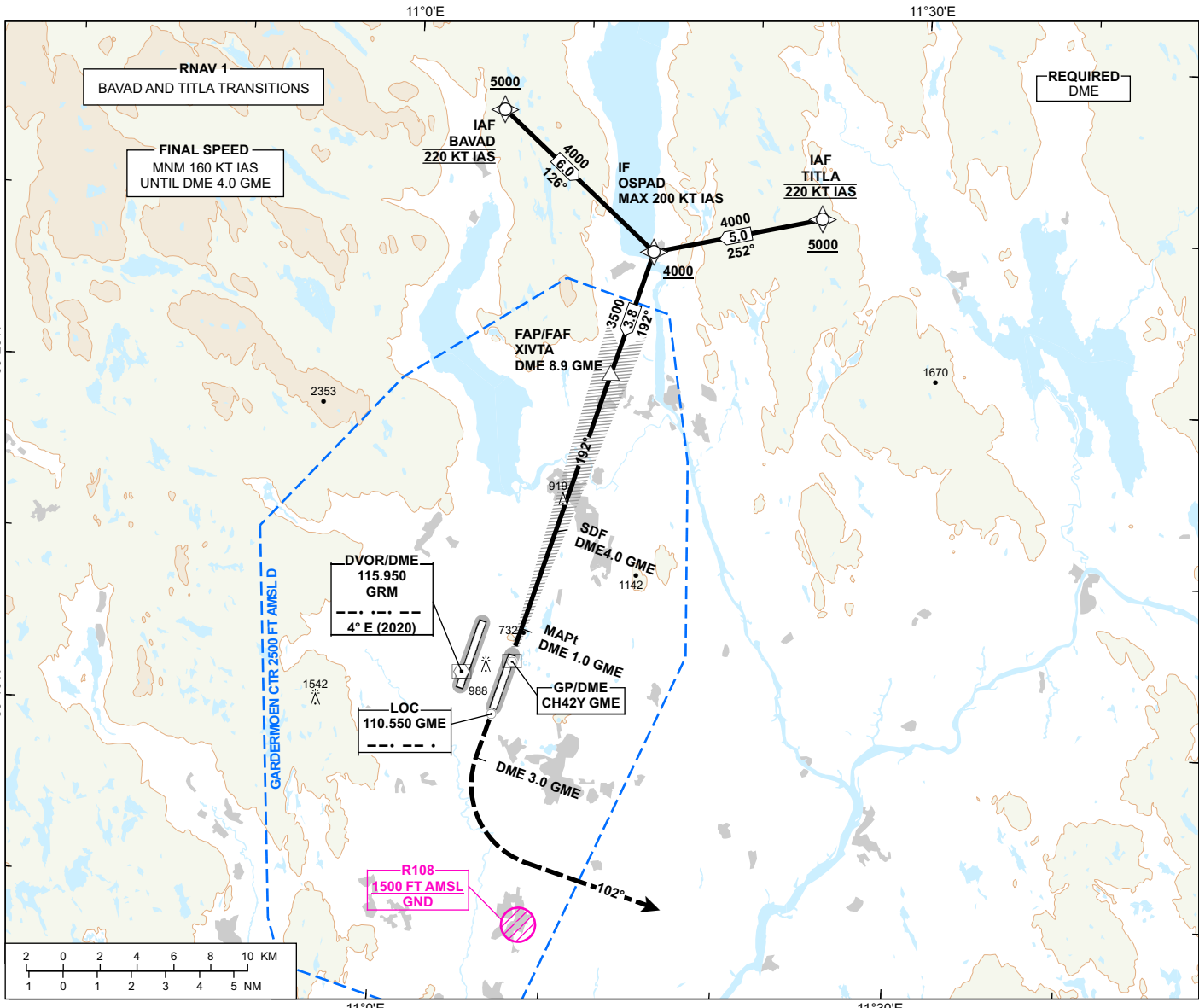
**OSLO
GARDERMOEN**

ILS or LOC RWY 19L CAT II & III

**TRANSITION ALTITUDE
7000**



| | |
|------------------------|-------------------------------------|
| ATIS: 126.130 | AD ELEV: 682 |
| APP: 118.480 120.455 | THR ELEV: 682 |
| DIR: 136.405 (119.980) | HGT RELATED TO THR 19L |
| FIN: 128.905 | CIRCLING HGT RELATED TO AD ELEV |
| TWR: 120.105 (123.330) | DIST IN NM. ELEV, ALT AND HGT IN FT |
| GND: 121.905 | SCALE 1:350 000 VAR 4° E (2020) |

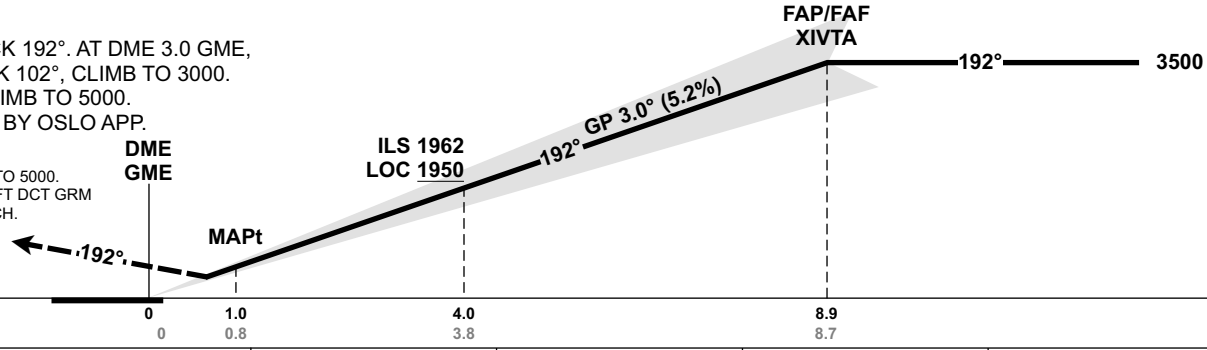


| | | | | | | | | |
|-------------|-------------|-------------|-------------|-------------|-------------|------------|------------|------------|
| DIST TO GME | 8 | 7 | 6 | 5 | 4 | 3 | 2 | 1 |
| ALT (HGT) | 3230 (2548) | 2910 (2228) | 2590 (1908) | 2270 (1588) | 1950 (1268) | 1640 (958) | 1320 (638) | 1000 (318) |

MISSED APPROACH:
 CLIMB ON RWY TRACK 192°. AT DME 3.0 GME, TURN LEFT TO TRACK 102°, CLIMB TO 3000. AT DME 13.5 GME, CLIMB TO 5000. EXPECT VECTORING BY OSLO APP.

RCF:
 CONTINUE ON TRACK 102° TO 5000. AT DME 20.0 GME, TURN LEFT DCT GRM FOR NEW INSTRUMENT APCH.

ILS RDH 50



| | | | | | |
|-------------------------|--------|------------|------------|------------|-----------|
| CAT OF ACFT | | A | B | C | D |
| OCA (H) STRAIGHT- IN | CAT I | 819 (137) | 827 (145) | 842 (160) | 858 (176) |
| | CAT II | (49) | (59) | (72) | (85) |
| | LOC | 1030 (348) | | | |
| CIRCLING | | 1280 (598) | 1530 (848) | 1630 (948) | |

NOTE: CIRCLING E OF RWY ONLY.

CHANGES: FREQUENCIES.

ATS AIRSPACE CLASSIFICATION: REF ENR 1.4