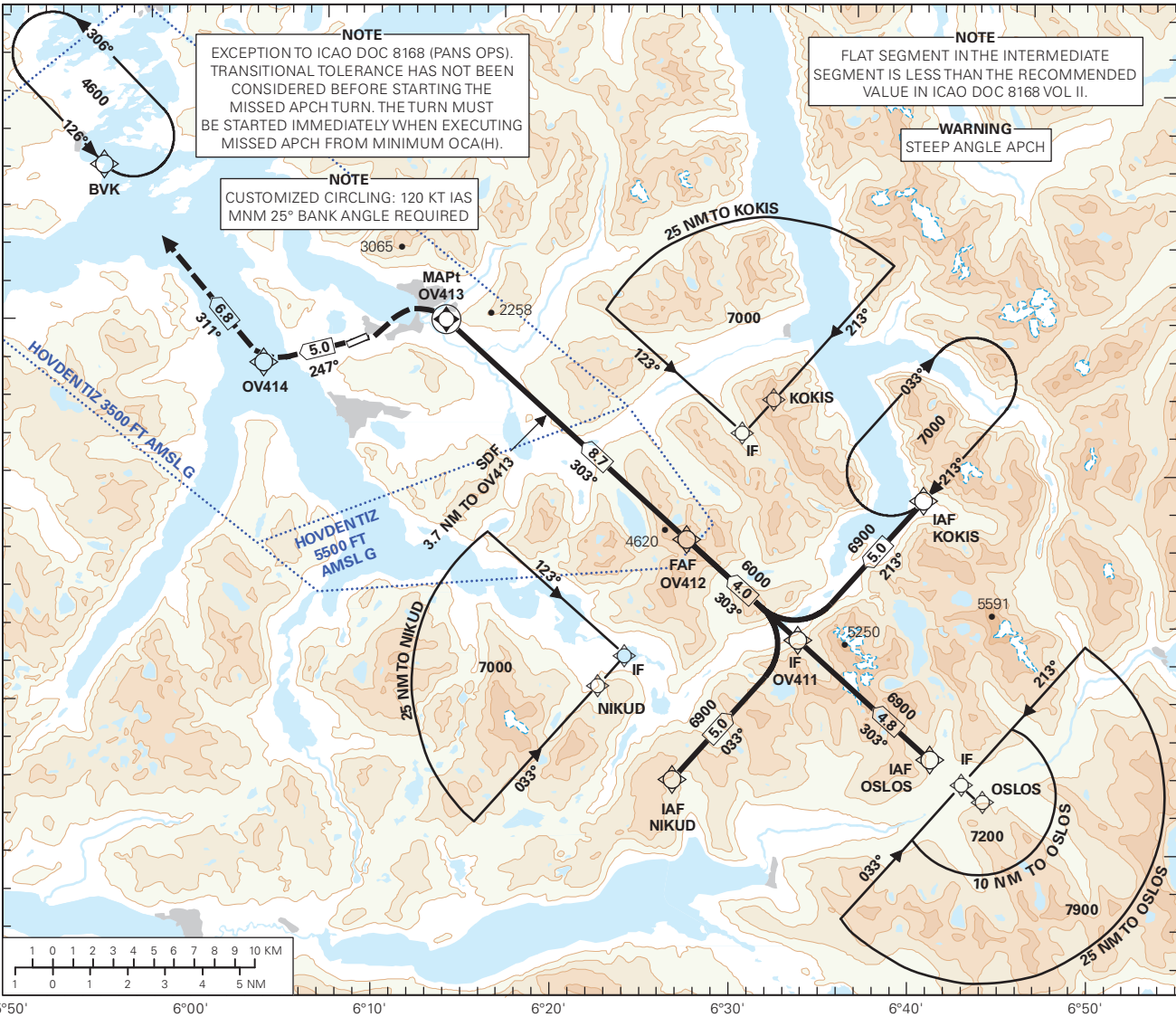


INSTRUMENT APPROACH CHART - ICAO

PLAN VIEW SCALE: 1:350 000

| | | | | |
|--|---------------|--|-------------------------|--|
| | APP: 129.330 | AD ELEV: 243 | | ØRSTA-VOLDA HOVDEN RNP-A |
| | AFIS: 118.905 | | DIST IN NM | |
| | VDF: 118.905 | | ELEV, ALT AND HGT IN FT | |
| | | CIRCLING HGT RELATED TO AD ELEV | | TRANSITION ALTITUDE 7000 |
| | | BEARINGS ARE MAGNETIC - VAR 2 ° E (2020) | | |



| | | | | | | | | |
|---------------|-------------|-------------|-------------|-------------|-------------|-------------|-------------|-------------|
| DIST TO OV413 | 8 | 7 | 6 | 5 | 4 | 3 | 2 | 1 |
| ALT (HGT) | 5710 (5467) | 5290 (5047) | 4860 (4617) | 4440 (4197) | 4010 (3767) | 3590 (3347) | 3160 (2917) | 2740 (2497) |

MISSED APCH:

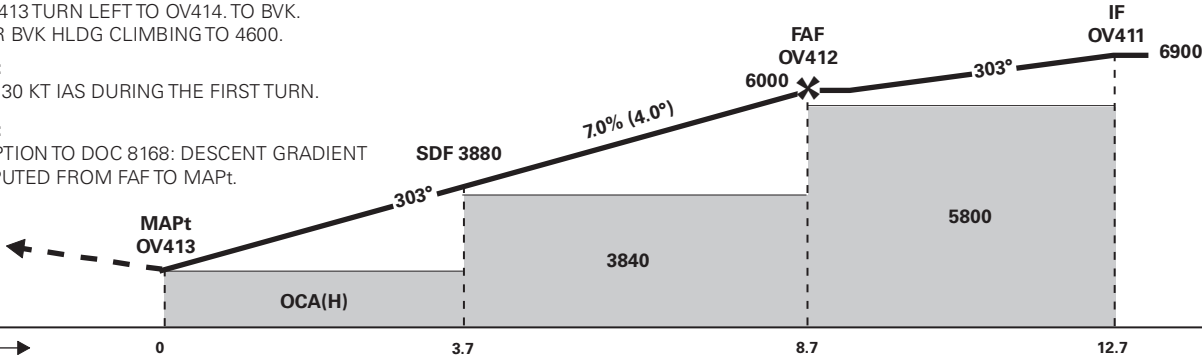
AT OV413 TURN LEFT TO OV414. TO BVK.
ENTER BVK HLDG CLIMBING TO 4600.

NOTE:

MAX 130 KT IAS DURING THE FIRST TURN.

NOTE:

EXCEPTION TO DOC 8168: DESCENT GRADIENT
COMPUTED FROM FAF TO MAPt.



| CAT OF ACFT | | A | B | C | D |
|---------------|-------|-------------|-------------|---|---|
| OCA(H) | | | | | |
| STRAIGHT - IN | | | | | |
| CIRCLING | 2.5% | 2310 (2067) | 3430 (3187) | - | - |
| | 2.5%* | - | 2380 (2137) | - | - |
| | 4.0%* | - | 2310 (2067) | - | - |

NOTE: CIRCLING N OF AD ONLY. * CUSTOMIZED CIRCLING.

ATS AIRSPACE CLASSIFICATION: REF ENR 1.4