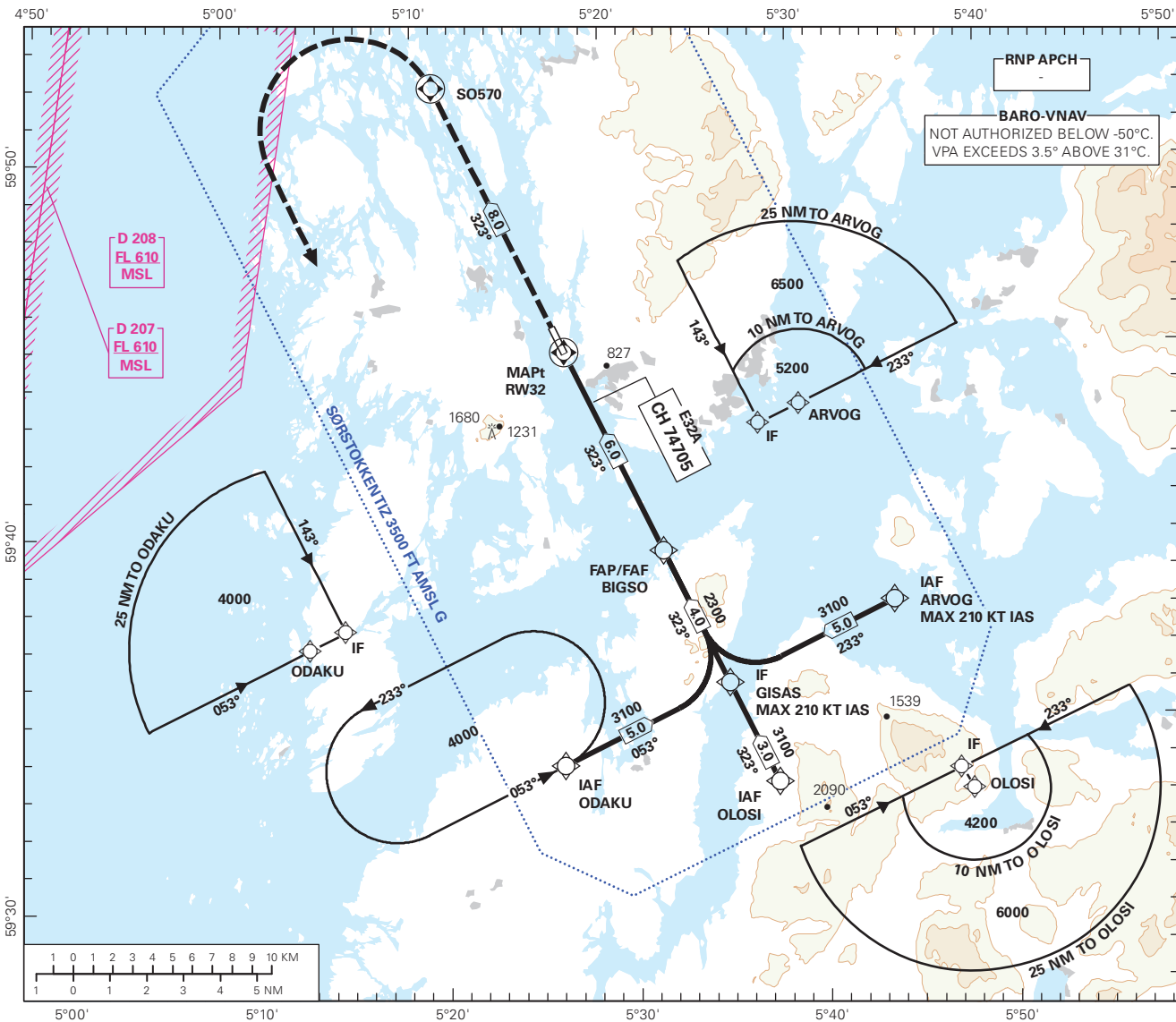


ATS AIRSPACE CLASSIFICATION: REF ENR 1.4.

INSTRUMENT APPROACH CHART - ICAO PLAN VIEW SCALE:1:350 000

APP: 121.005 (FLESLAND)	AD ELEV: 161	<div>STORD</div> <div>SØRSTOKKEN</div> <div>RNP RWY 32</div> <div>TRANSITION ALTITUDE</div> <div>7000</div>
AFIS: 120.205	THR ELEV: 152	
	HGT RELATED TO THR RWY 32	
	CIRCLING HGT RELATED TO AD ELEV	
BEARINGS ARE MAGNETIC - VAR: 2° E (2020)		

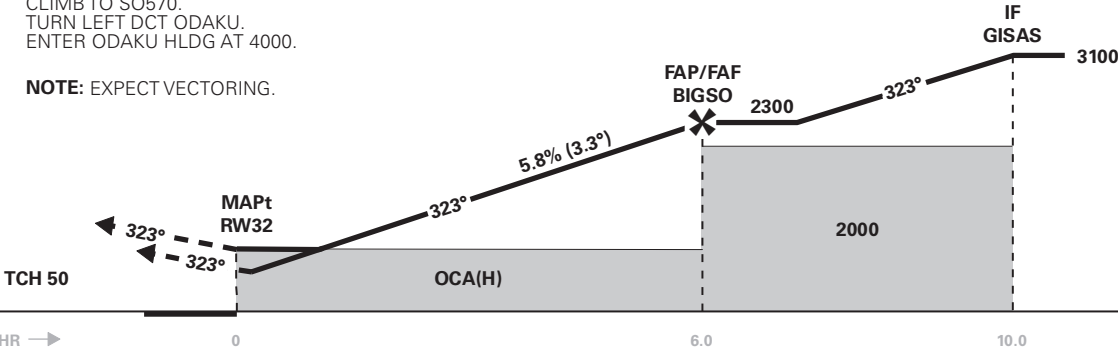
BARO-VNAV
NOT AUTHORIZED BELOW -50°C.
VPA EXCEEDS 3.5° ABOVE 31°C.



DIST TO RW32	9	8	7	6	5	4	3	2
ALT (HGT)	-	-	-	2300 (2148)	1960 (1808)	1610 (1458)	1260 (1108)	910 (758)

MISSED APCH:
CLIMB TO SO570.
TURN LEFT DCT ODAKU.
ENTER ODAKU HLDG AT 4000.

NOTE: EXPECT VECTORING.



CHANGES: FREQUENCIES.

CAT OF ACFT		A	B	C	D
OCA(H) STRAIGHT - IN	LPV	414 (262)	428 (275)	436 (284)	-
	LNAV/VNAV		900 (748)		-
	LNAV		900 (748)		-
CIRCLING		900 (739)	1600 (1439)	2080 (1919)	-

NOTE: CIRCLING SW OF AD ONLY.