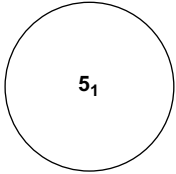
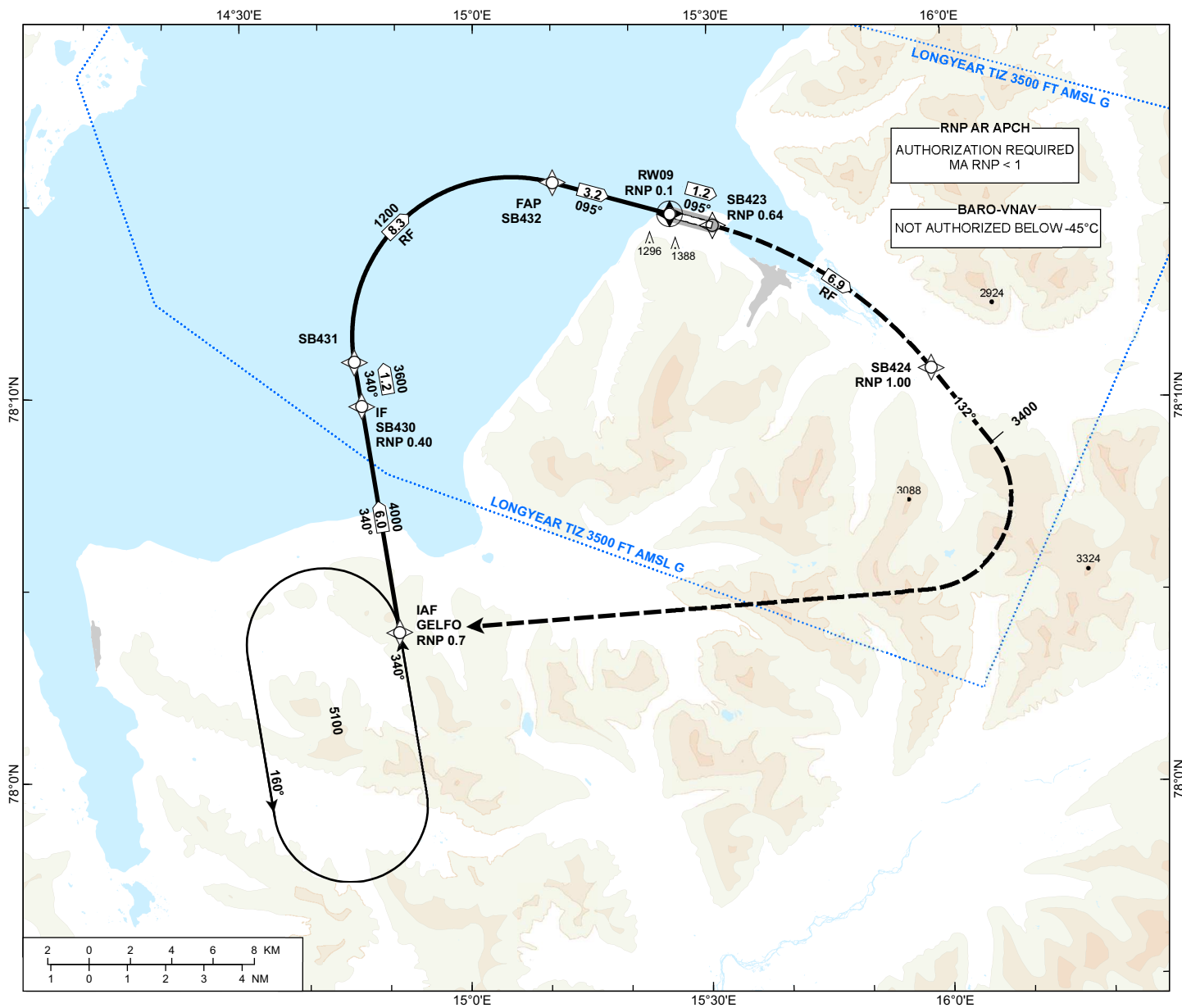


INSTRUMENT APPROACH CHART - ICAO

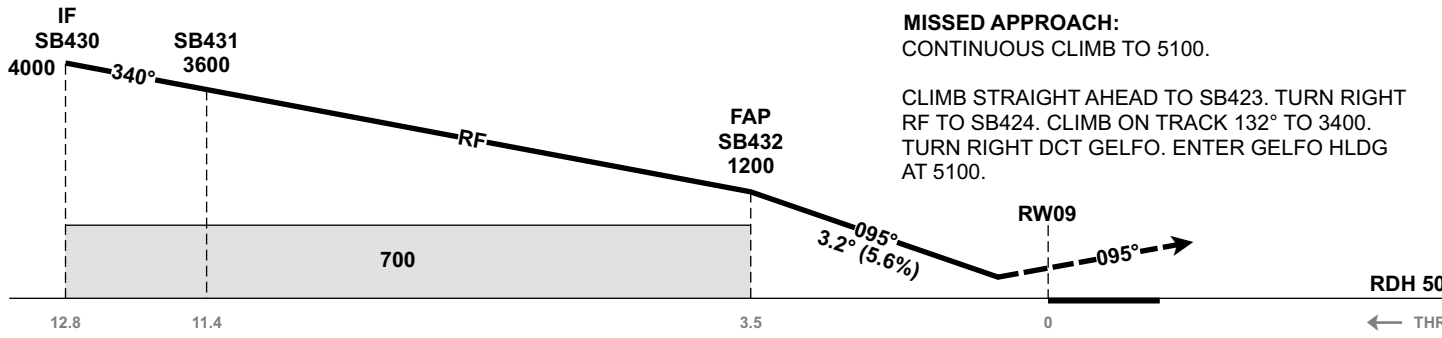
 <p>MSA 25 NM ARP</p>	AFIS: 118.100 119.850	AD ELEV: 94
	VDF AVBL.	THR ELEV: 71
		HGT RELATED TO THR 09
		CIRCLING HGT RELATED TO AD ELEV
		DIST IN NM. ELEV, ALT AND HGT IN FT
	SCALE 1:300 000	VAR 10° E (2020)

**SVALBARD
LONGYEAR**
RNP W RWY 09 (AR)
TRANSITION ALTITUDE
5000

ATS AIRSPACE CLASSIFICATION: REF ENR 1.4



DIST TO RW09	9	8	7	6	5	4	3	2
ALT (HGT)	-	-	-	-	-	-	-	-



MISSED APPROACH:
CONTINUOUS CLIMB TO 5100.

CLIMB STRAIGHT AHEAD TO SB423. TURN RIGHT RF TO SB424. CLIMB ON TRACK 132° TO 3400. TURN RIGHT DCT GELFO. ENTER GELFO HLDG AT 5100.

CAT OF ACFT		A	B	C	D
OCA (H) STRAIGHT-IN	RNP 0.1 2.6%*	1057 (986)	1080 (1009)	1099 (1028)	1118 (1047)
	RNP 0.1 4.0%*	340 (269)	366 (295)	388 (317)	410 (339)
CIRCLING		-	-	-	-

NOTE: *MNM MISSED APCH CLIMB GRADIENT.

CHANGES: RNP VALUE AT GELFO. EDITORIALS.