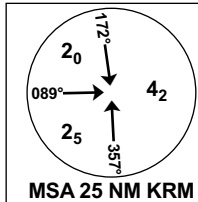


**INSTRUMENT APPROACH CHART - ICAO**

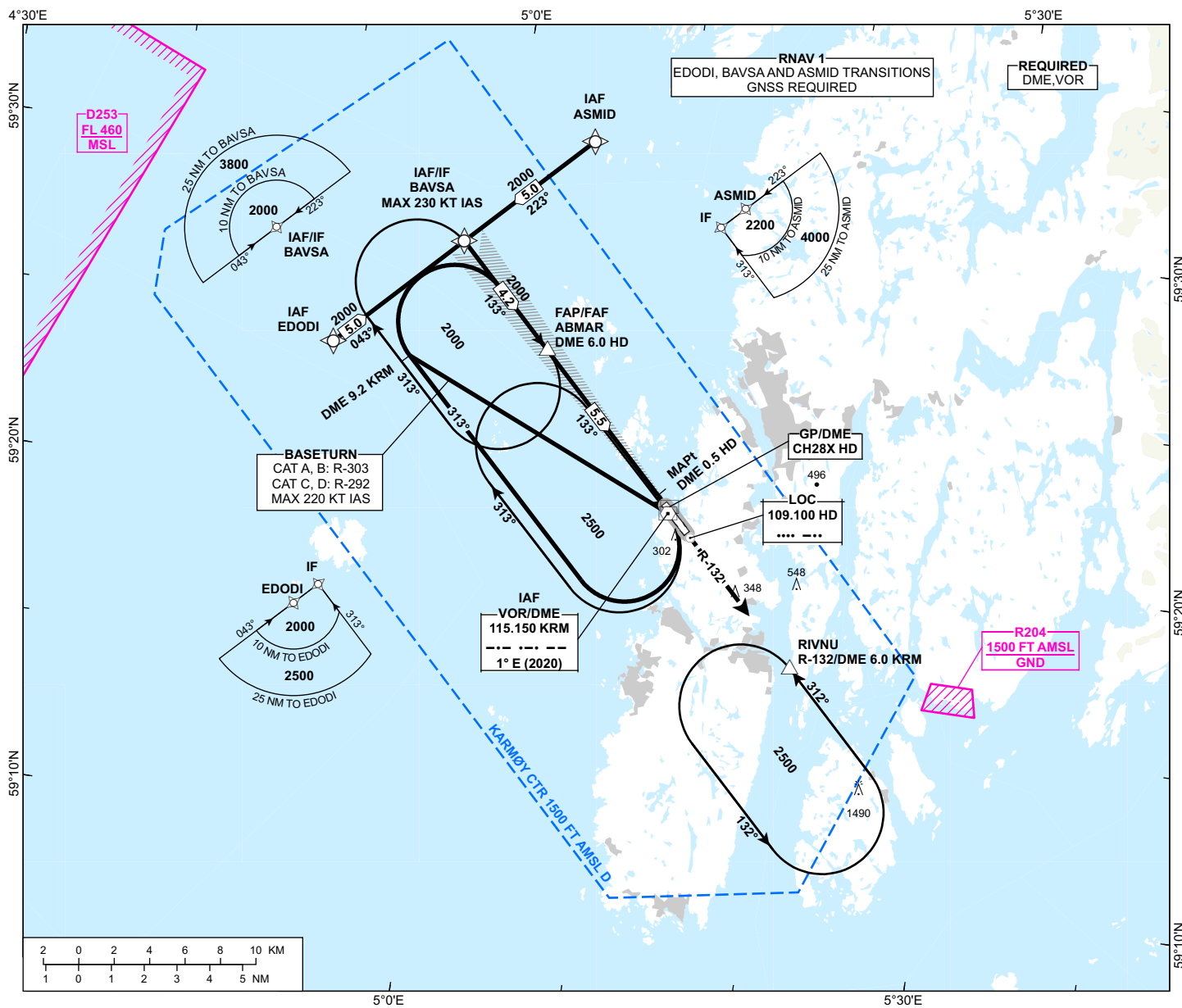
**HAUGESUND  
KARMØY**

**ILS or LOC RWY 13**

TRANSITION ALTITUDE  
**7000**

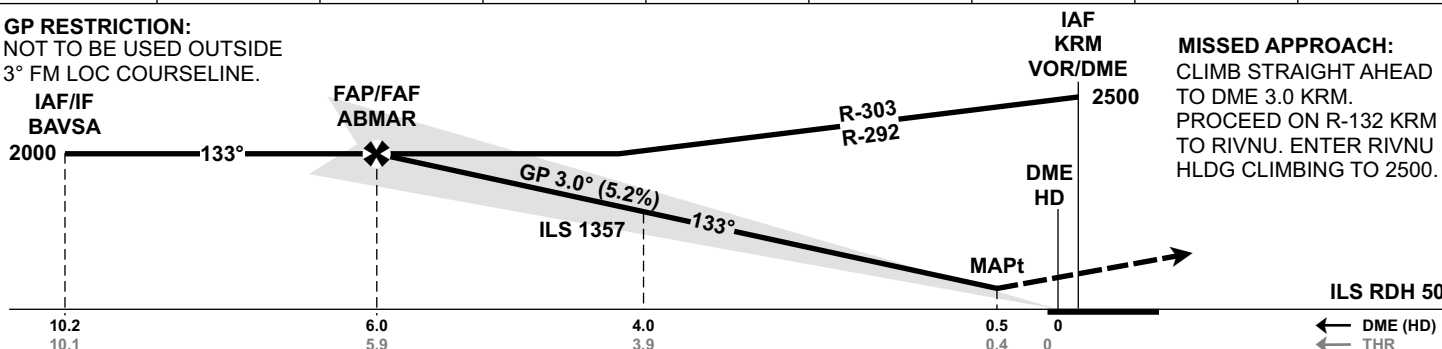


ATIS: 118.180	AD ELEV: 87
APP: 119.605 (SOLA)	THR ELEV: 62
TWR: 120.505	HGT RELATED TO THR 13
	CIRCLING HGT RELATED TO AD ELEV
	DIST IN NM. ELEV, ALT AND HGT IN FT
SCALE 1:350 000	VAR 1° E (2020)



DIST TO HD	8	7	6	5	4	3	2	1
ALT (HGT)	-	-	-	1690 (1628)	1360 (1298)	1030 (968)	710 (648)	390 (328)

**GP RESTRICTION:**  
NOT TO BE USED OUTSIDE  
3° FM LOC COURSELINE.



**MISSED APPROACH:**  
CLIMB STRAIGHT AHEAD  
TO DME 3.0 KRM.  
PROCEED ON R-132 KRM  
TO RIVNU. ENTER RIVNU  
HLDG CLIMBING TO 2500.

ILS RDH 50

← DME (HD)  
← THR

CAT OF ACFT		A	B	C	D
OCA (H) STRAIGHT-IN	CAT I	238 (176)	249 (187)	258 (196)	268 (206)
	LOC	380 (318)	390 (328)	400 (338)	410 (348)
CIRCLING		610 (523)	650 (563)	930 (843)	940 (853)

NOTE:

CHANGES: FREQUENCIES.

ATS AIRSPACE CLASSIFICATION: REF ENR 1.4