

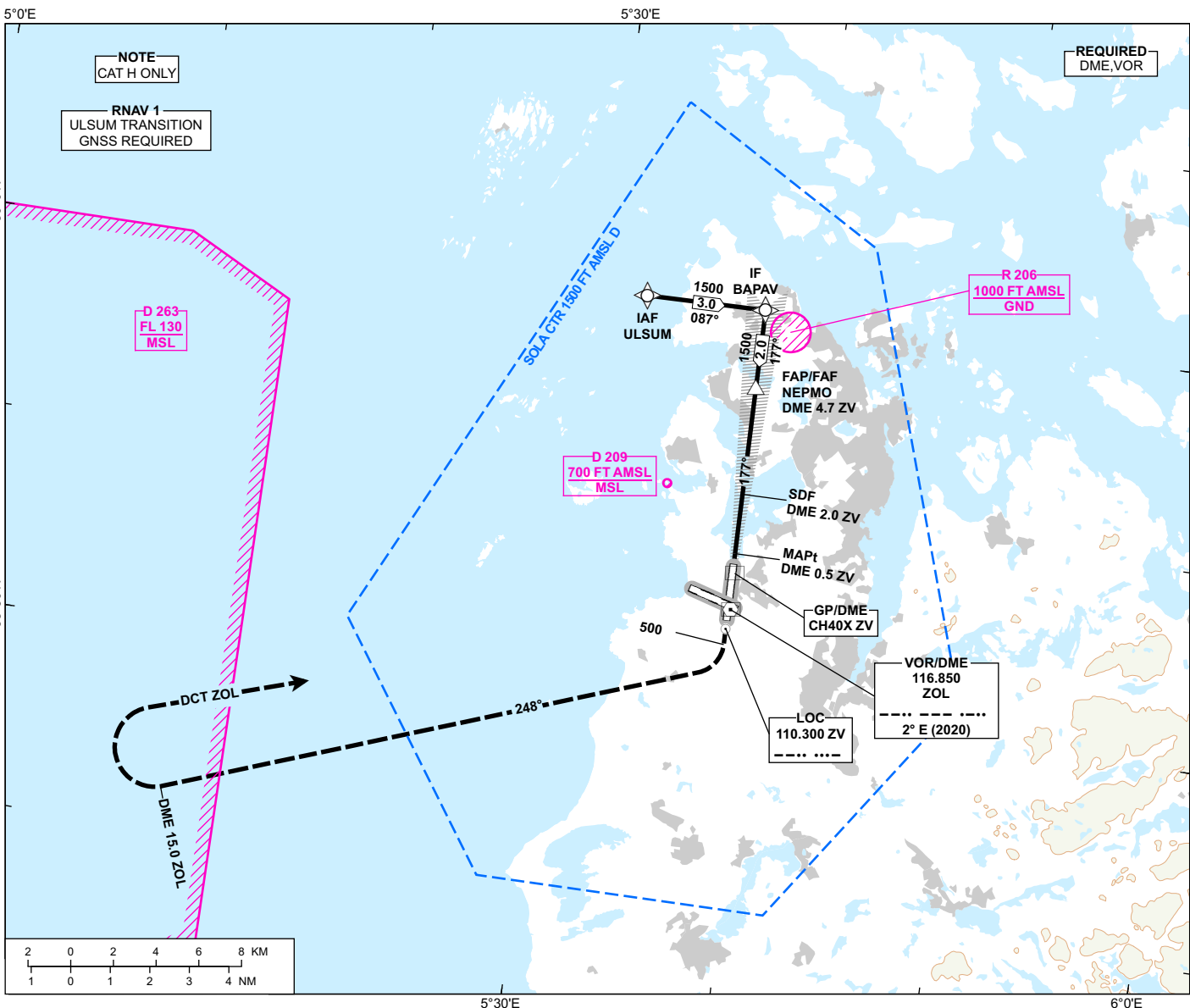
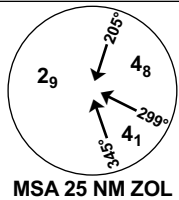
**INSTRUMENT APPROACH CHART - ICAO**

**STAVANGER SOLA**

**ILS Y or LOC Y RWY 18**

TRANSITION ALTITUDE  
7000

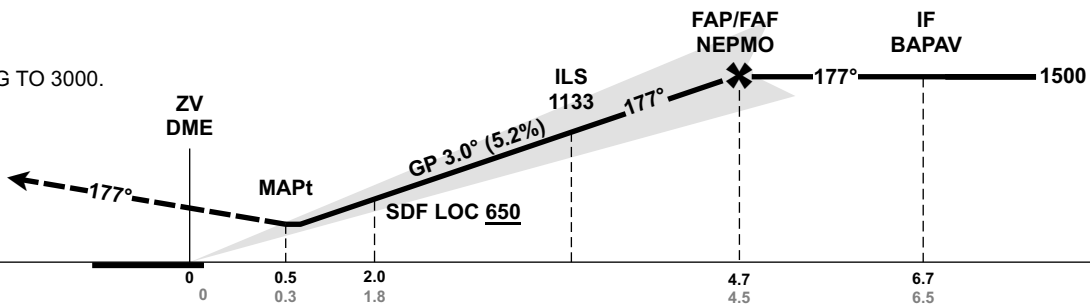
ATIS: 126.005	AD ELEV: 30
APP: 119.605 119.405	THR ELEV: 10
118.505	HGT RELATED TO THR 18
TWR: 118.355	CIRCLING HGT RELATED TO AD ELEV
GND: 121.755	DIST IN NM. ELEV, ALT AND HGT IN FT
SCALE 1:300 000	VAR 2° E (2020)



DIST TO ZV	9	8	7	6	5	4	3	2
ALT (HGT)	-	-	-	-	-	1290 (1280)	970 (960)	650 (640)

**MISSED APCH:**  
CLIMB ON TRACK 177° TO 500.  
TURN RIGHT TO TRACK 248° TO 2000. AT DME 15.0 ZOL  
TURN RIGHT DCT ZOL CLIMBING TO 3000.  
MAKE NEW APCH.

**NOTE:**  
EXPECT VECTORING.  
NO TURN BEFORE MAPt.



CAT OF ACFT		H	
OCA (H) STRAIGHT- IN	CAT I	169 (159)	
	LOC	390 (380)	
CIRCLING		-	-

NOTE:

CHANGES: FREQUENCIES.

ATS AIRSPACE CLASSIFICATION: REF ENR 1.4