

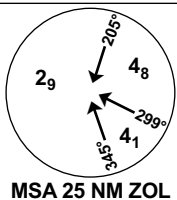
INSTRUMENT APPROACH CHART - ICAO

STAVANGER SOLA

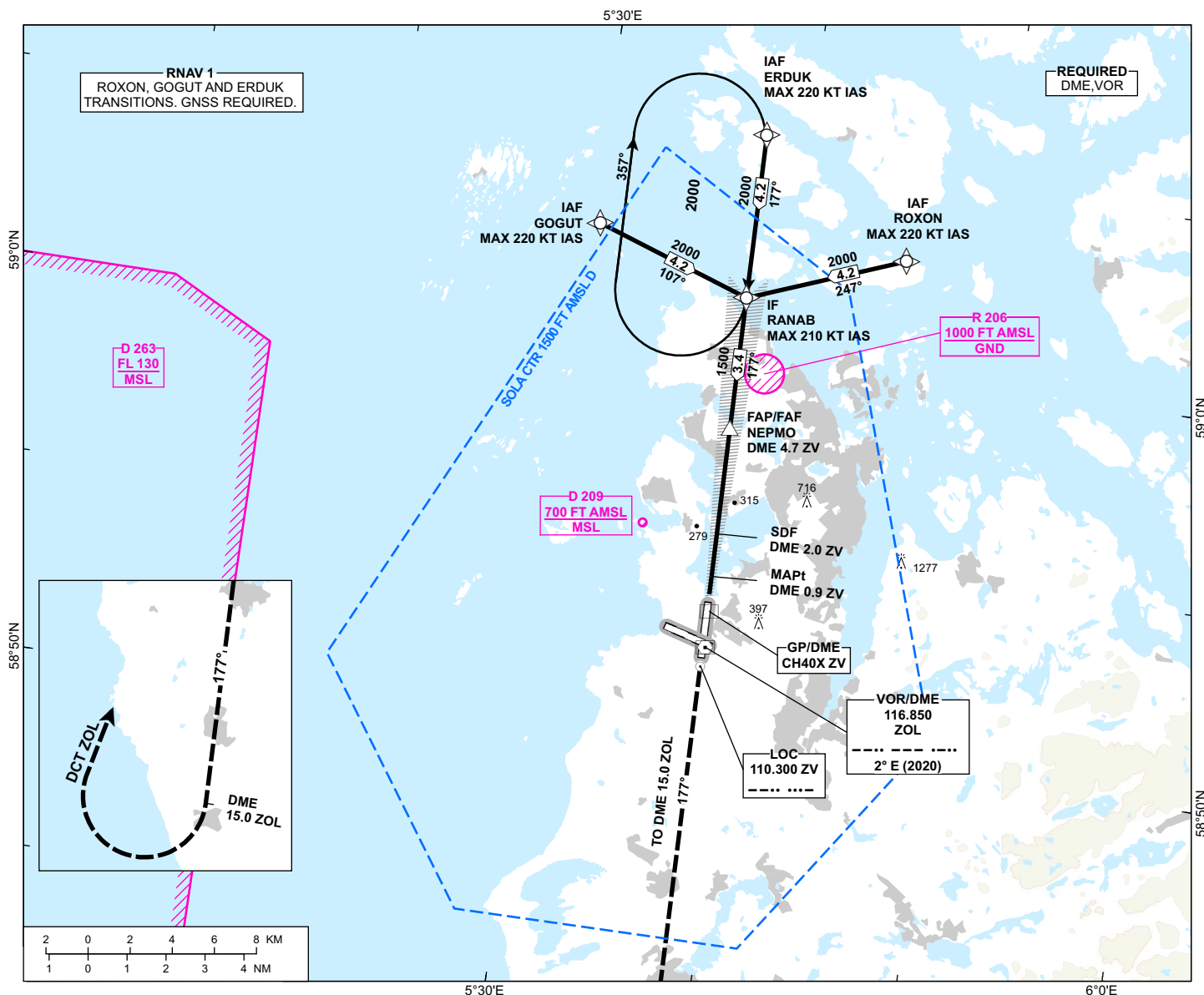
ILS Z or LOC Z RWY 18 CAT II

TRANSITION ALTITUDE
7000

ATIS: 126.005	AD ELEV: 30
APP: 119.605 119.405	THR ELEV: 10
118.505	HGT RELATED TO THR 18
TWR: 118.355	CIRCLING HGT RELATED TO AD ELEV
GND: 121.755	DIST IN NM. ELEV, ALT AND HGT IN FT
SCALE 1:300 000	VAR 2° E (2020)



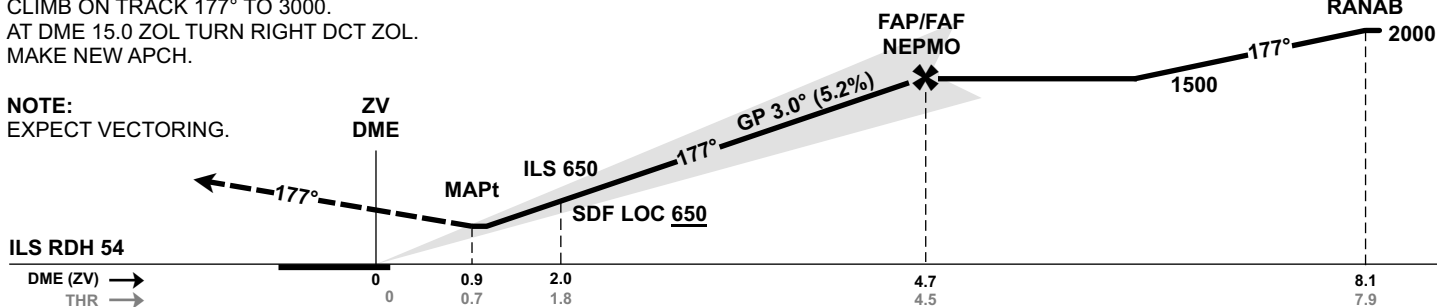
ATS AIRSPACE CLASSIFICATION: REF ENR 1.4



DIST TO ZV	9	8	7	6	5	4	3	2
ALT (HGT)	-	-	-	-	-	1280 (1270)	970 (960)	650 (640)

MISSED APCH:
CLIMB ON TRACK 177° TO 3000.
AT DME 15.0 ZOL TURN RIGHT DCT ZOL.
MAKE NEW APCH.

NOTE:
EXPECT VECTORING.



CAT OF ACFT		A	B	C	D
OCA (H) STRAIGHT- IN	CAT I	169 (159)	177 (167)	186 (176)	200 (190)
	CAT II	(73)	(84)	(95)	(107)
LOC		420(410)			
CIRCLING		700 (670)		1150 (1120)	1680 (1650)

NOTE:

CHANGES: FREQUENCIES.