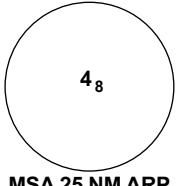
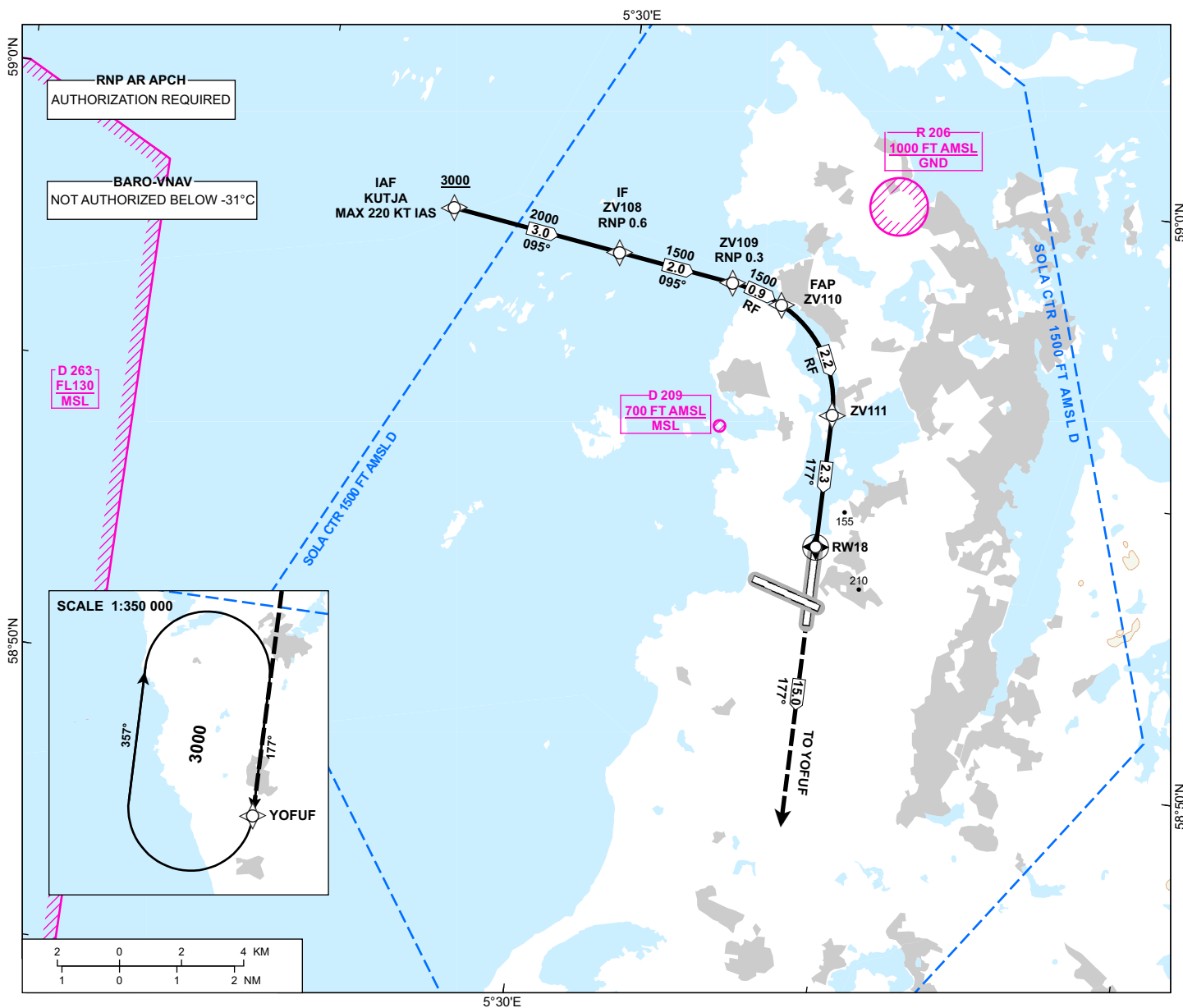


INSTRUMENT APPROACH CHART - ICAO

**STAVANGER
SOLA
RNP W RWY 18 (AR)**

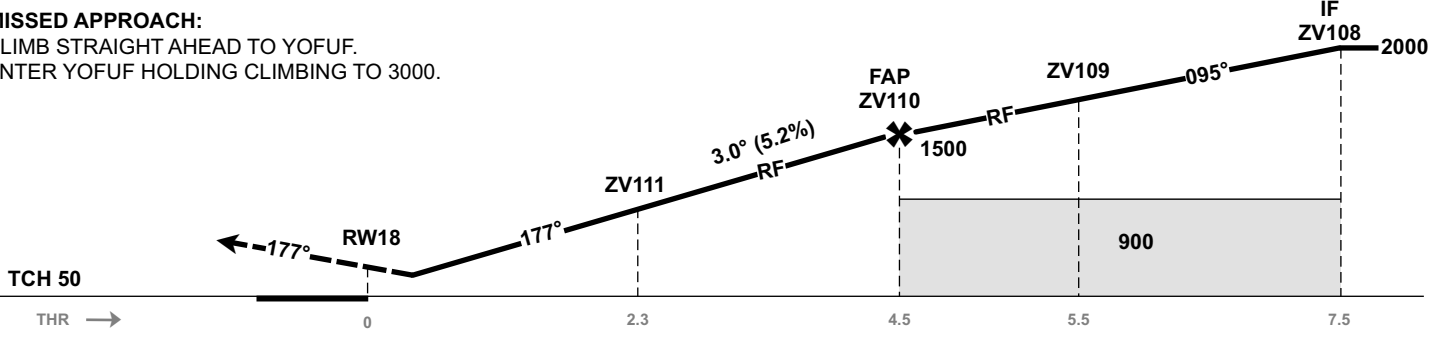
 <p>MSA 25 NM ARP</p>	ATIS: 126.005	AD ELEV: 30
	APP: 119.605 119.405	THR ELEV: 10
	118.505	HGT RELATED TO THR 18
	TWR: 118.355	CIRCLING HGT RELATED TO AD ELEV
	GND: 121.755	DIST IN NM. ELEV, ALT AND HGT IN FT
	SCALE 1:200 000	VAR 2° E (2020)

TRANSITION ALTITUDE
7000



DIST TO RW18	9	8	7	6	5	4	3	2
ALT (HGT)	-	-	-	-	-	-	-	-

MISSED APPROACH:
CLIMB STRAIGHT AHEAD TO YOFUF.
ENTER YOFUF HOLDING CLIMBING TO 3000.



CAT OF ACFT		A	B	C	D
OCA (H) STRAIGHT-IN	RNP 0.3 (2.5%*)	328 (318)	348 (338)	366 (356)	385 (375)
	RNP 0.3 (5.0%*)	-	346 (336)	354 (344)	366 (356)
CIRCLING		700 (670)		1150 (1120)	1680 (1650)

NOTE: *MNM MISSED APCH CLIMB GRADIENT.

ATS AIRSPACE CLASSIFICATION: REF ENR 1.4

CHANGES: FREQUENCIES, EDITORIALS.