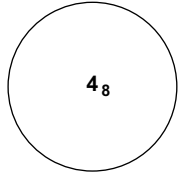


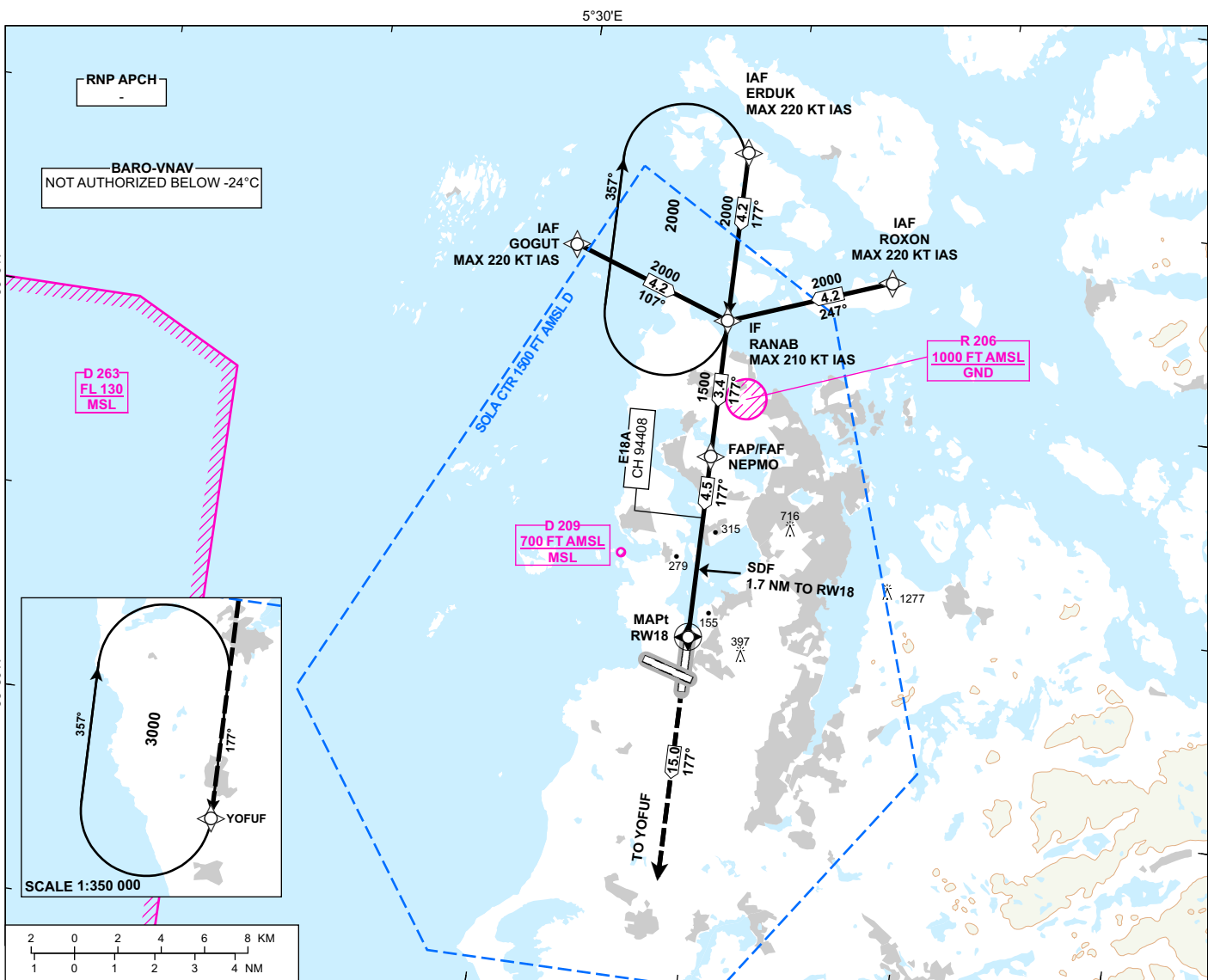
INSTRUMENT APPROACH CHART - ICAO

STAVANGER SOLA

RNP Z RWY 18

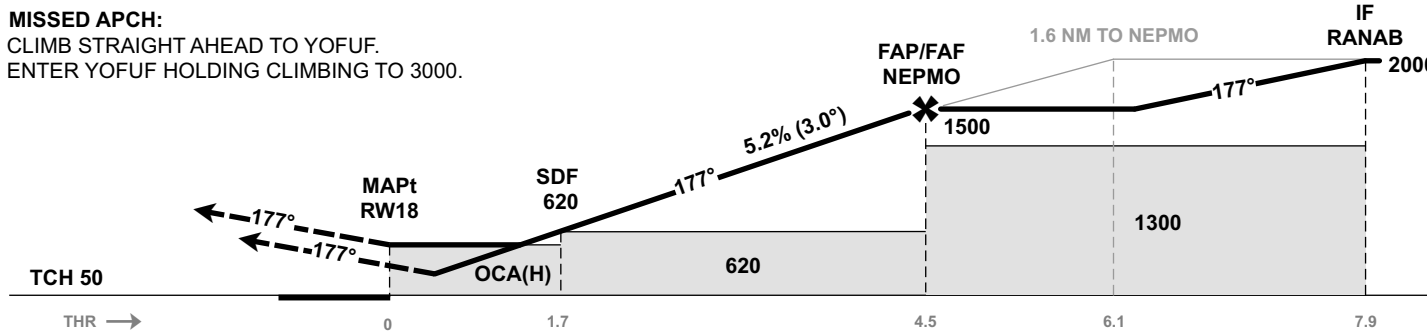
TRANSITION ALTITUDE
7000

 <p>MSA 25 NM ARP</p>	ATIS: 126.005	AD ELEV: 30
	APP: 119.605 119.405	THR ELEV: 10
	118.505	HGT RELATED TO THR 18
	TWR: 118.355	CIRCLING HGT RELATED TO AD ELEV
	GND: 121.755	DIST IN NM. ELEV, ALT AND HGT IN FT
	SCALE 1:300 000	VAR 2° E (2020)



DIST TO RW18	9	8	7	6	5	4	3	2
ALT (HGT)	-	-	-	-	-	1340 (1330)	1020 (1010)	700 (690)

MISSED APCH:
CLIMB STRAIGHT AHEAD TO YOFUF.
ENTER YOFUF HOLDING CLIMBING TO 3000.



CAT OF ACFT		A	B	C	D
OCA (H) STRAIGHT- IN	LPV	189 (179)	201 (191)	213 (203)	224 (214)
	LNAV/VNAV	340 (330)	350 (340)	360 (350)	370 (360)
	LNAV	470 (460)			
CIRCLING	700 (670)		1150 (1120)		1680 (1650)

NOTE:

CHANGES: FREQUENCIES, EDITORIALS.

ATS AIRSPACE CLASSIFICATION: REF ENR 1.4