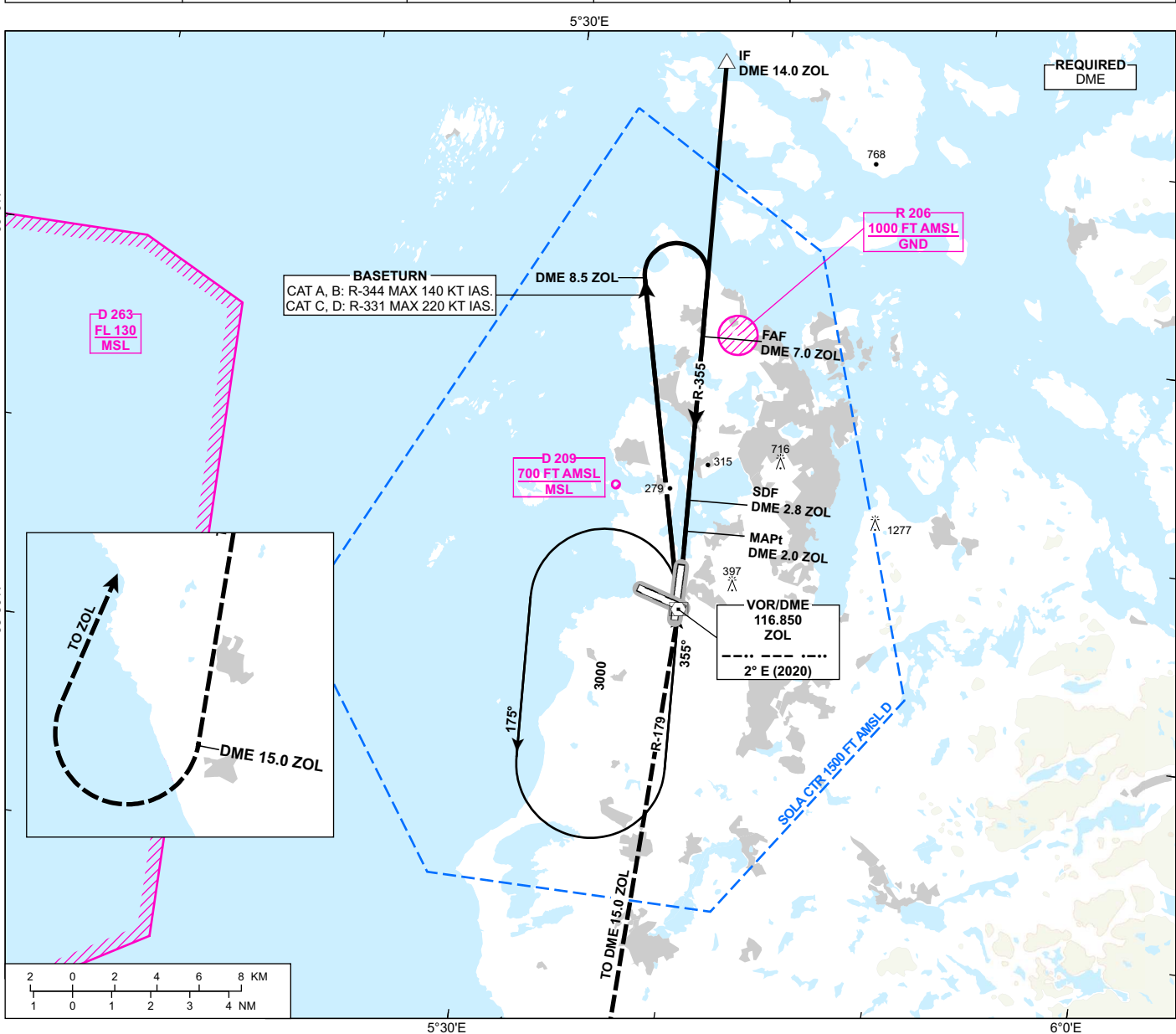


INSTRUMENT APPROACH CHART - ICAO

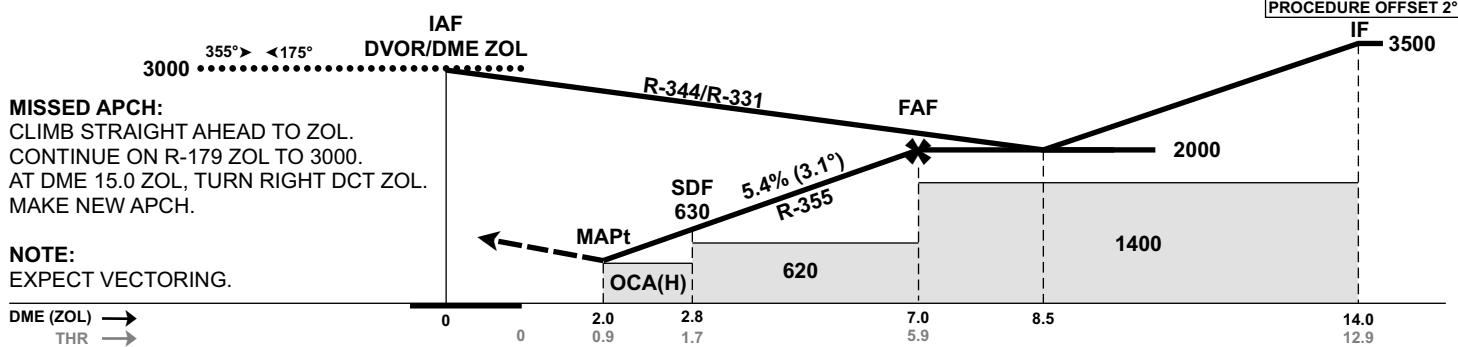
**STAVANGER
SOLA
VOR RWY 18**

ATIS: 126.005	AD ELEV: 30
APP: 119.605 119.405	THR ELEV: 10
118.505	HGT RELATED TO THR 18
TWR: 118.355	CIRCLING HGT RELATED TO AD ELEV
GND: 121.755	DIST IN NM. ELEV, ALT AND HGT IN FT
SCALE 1:300 000	VAR 2° E (2020)

TRANSITION ALTITUDE
7000



DIST TO ZOL	10	9	8	7	6	5	4	3
ALT (HGT)	-	-	-	2000 (1990)	1680 (1670)	1350 (1340)	1020 (1010)	690 (680)



MISSED APCH:
CLIMB STRAIGHT AHEAD TO ZOL.
CONTINUE ON R-179 ZOL TO 3000.
AT DME 15.0 ZOL, TURN RIGHT DCT ZOL.
MAKE NEW APCH.

NOTE:
EXPECT VECTORING.

DME (ZOL)	0	2.0	2.8	7.0	8.5	14.0
THR	0	0.9	1.7	5.9		12.9
CAT OF ACFT		A		B	C	D
OCA (H) STRAIGHT-IN				510 (500)		
CIRCLING		700 (670)		1150 (1120)	1680 (1650)	

NOTE: