

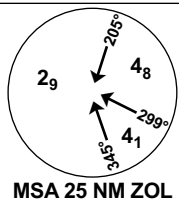
INSTRUMENT APPROACH CHART - ICAO

**STAVANGER
SOLA**

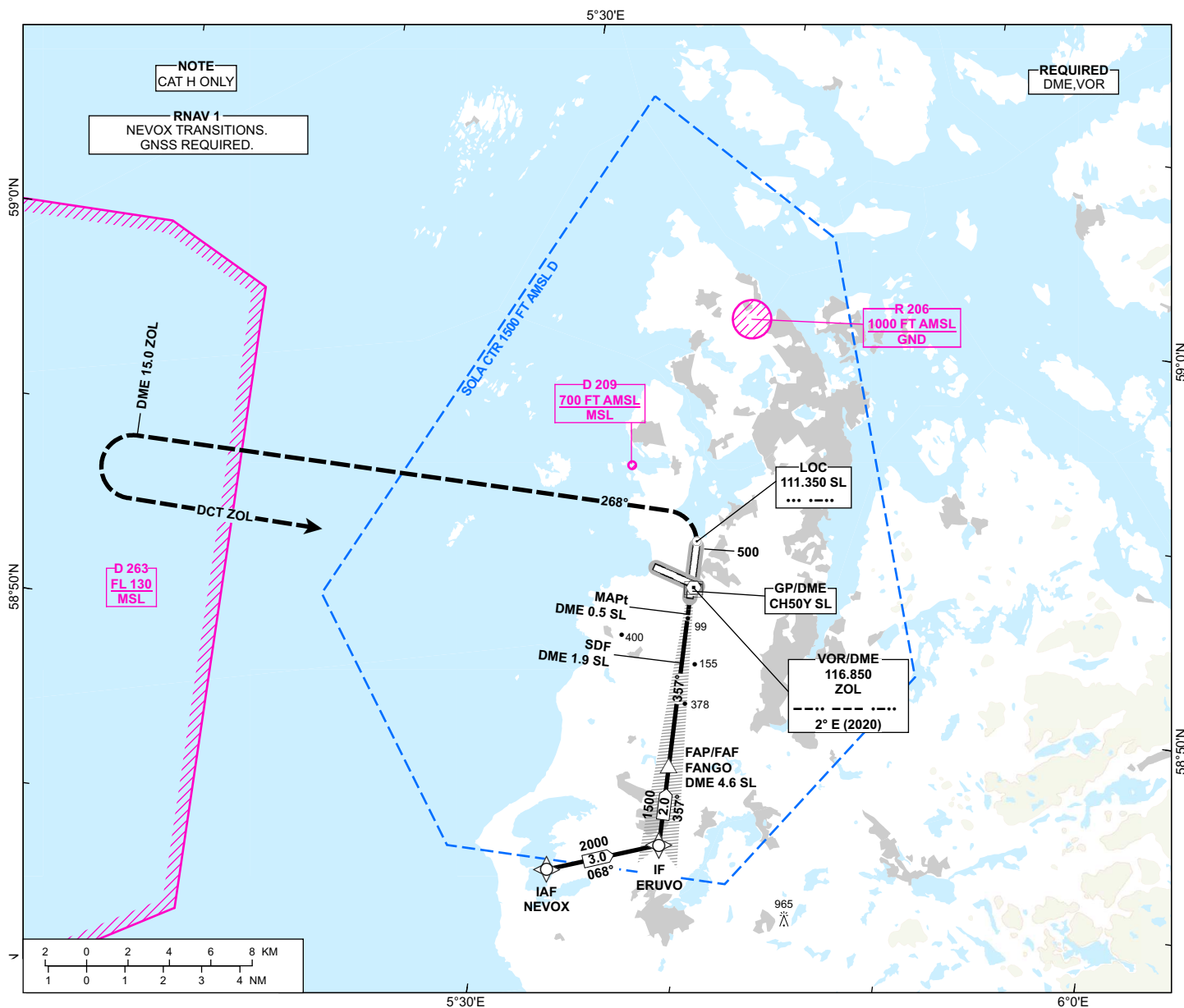
ILS Y or LOC Y RWY 36

TRANSITION ALTITUDE
7000

ATIS: 126.005	AD ELEV: 30
APP: 119.605 119.405 118.505	THR ELEV: 29 HGT RELATED TO THR 36
TWR: 118.355	CIRCLING HGT RELATED TO AD ELEV
GND: 121.755	DIST IN NM. ELEV, ALT AND HGT IN FT
	SCALE 1:300 000 VAR 2°E (2020)

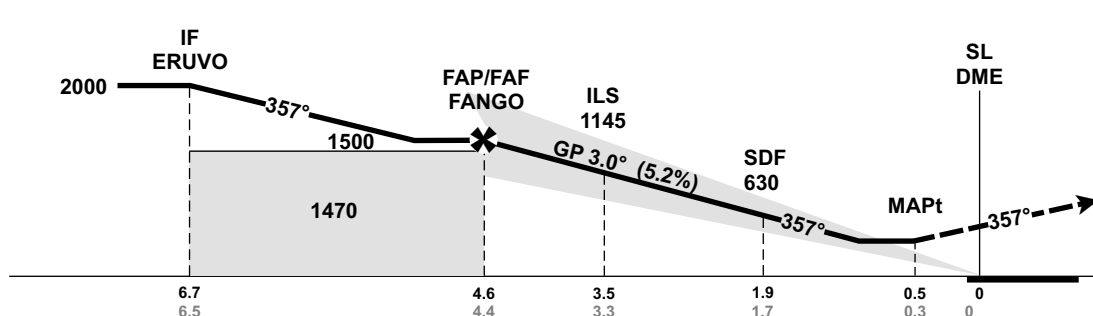


ATS AIRSPACE CLASSIFICATION: REF ENR 1.4



DIST TO SL	9	8	7	6	5	4	3	2
ALT (HGT)	-	-	-	-	-	1300 (1271)	980 (951)	660 (631)

ILS RDH 50



MISSED APCH:
CLIMB ON TRACK 357° TO 500.
TURN LEFT TO TRACK 268° TO 2000. AT DME 15.0 ZOL TURN LEFT DCT ZOL TO 3000. MAKE NEW APCH.

NOTE:
EXPECT VECTORING.
NO TURN BEFORE MAPt.

← DME (SL)
← THR

CAT OF ACFT		H			
OCA (H) STRAIGHT-IN	CAT I	240 (211)	-	-	-
	LOC	450 (421)	-	-	-
CIRCLING		-	-	-	-

NOTE:

CHANGES: FREQUENCIES.