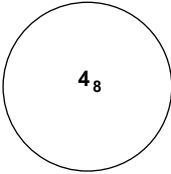
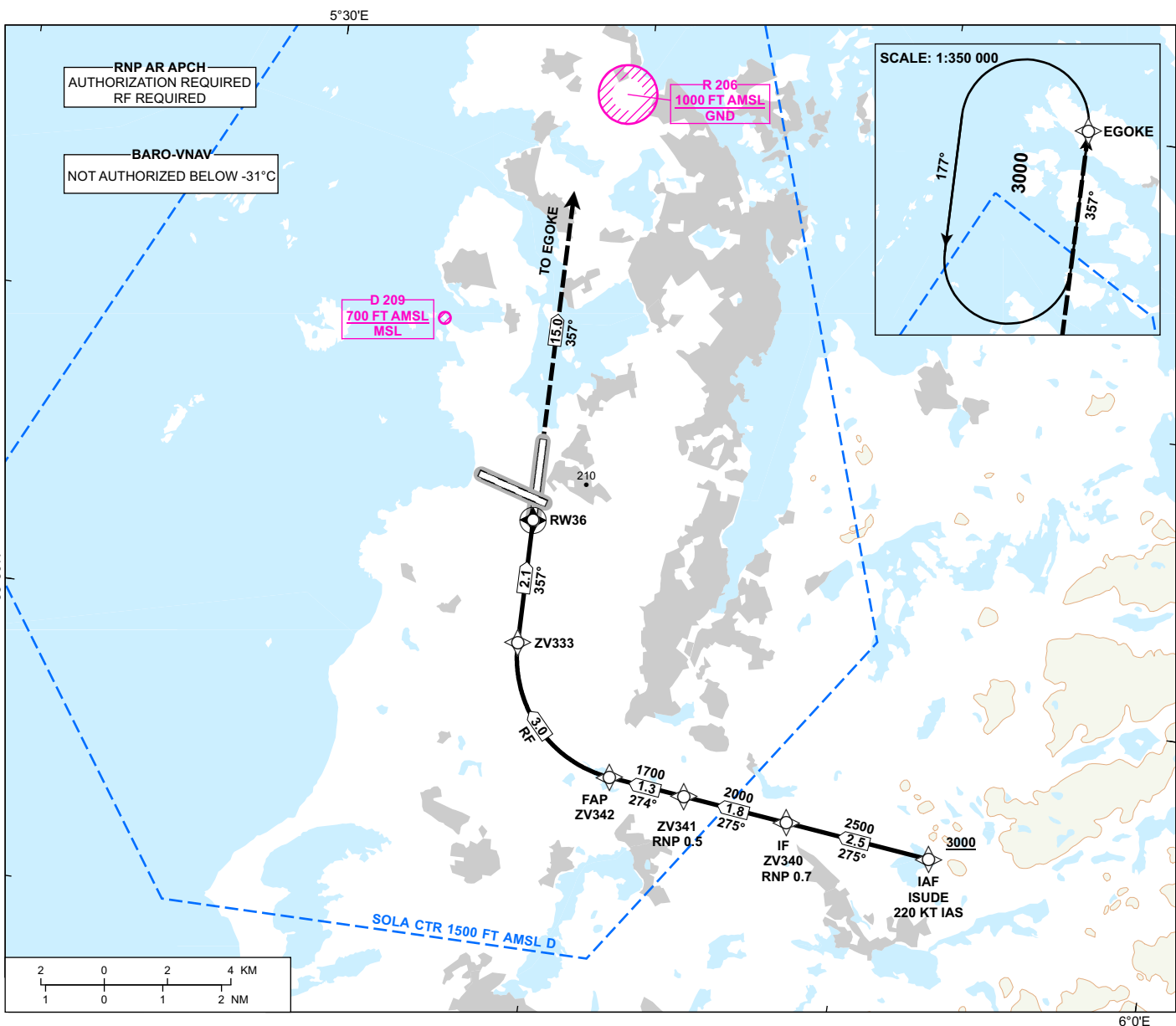


INSTRUMENT APPROACH CHART - ICAO

**STAVANGER
SOLA
RNP E RWY 36 (AR)**

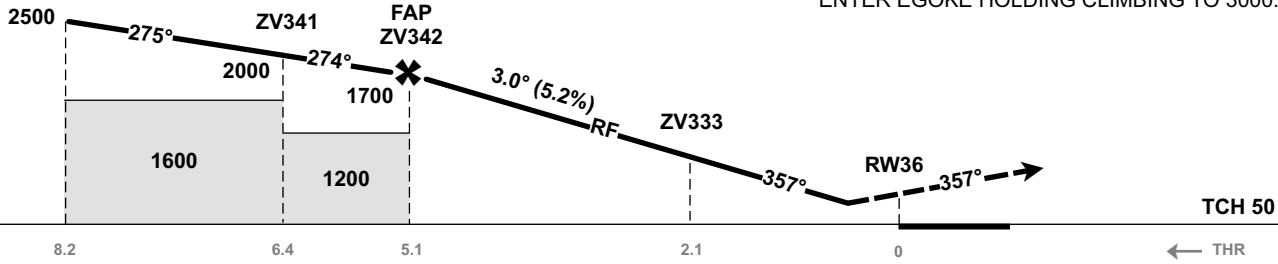
| | | |
|---|----------------------|-------------------------------------|
|  MSA 25 NM ARP | ATIS: 126.005 | AD ELEV: 30 |
| | APP: 119.605 119.405 | THR ELEV: 29 |
| | 118.505 | HGT RELATED TO THR 36 |
| | TWR: 118.355 | CIRCLING HGT RELATED TO AD ELEV |
| | GND: 121.755 | DIST IN NM. ELEV, ALT AND HGT IN FT |
| | SCALE 1:200 000 | VAR 2° E (2020) |

TRANSITION ALTITUDE
7000



| | | | | | | | | |
|--------------|---|---|---|---|---|---|---|---|
| DIST TO RW36 | 9 | 8 | 7 | 6 | 5 | 4 | 3 | 2 |
| ALT (HGT) | - | - | - | - | - | - | - | - |

MISSED APPROACH:
CLIMB STRAIGHT AHEAD TO EGOKE.
ENTER EGOKE HOLDING CLIMBING TO 3000.



| CAT OF ACFT | | A | B | C | D |
|------------------------|-----------------|-----------|-----------|-------------|-------------|
| OCA (H) STRAIGHT-IN | RNP 0.3 (2.5%*) | 325 (296) | 348 (319) | 366 (337) | 385 (356) |
| | RNP 0.3 (5.0%*) | - | 335 (306) | 345 (316) | 366 (337) |
| CIRCLING | | 700 (670) | | 1150 (1120) | 1680 (1650) |

NOTE: *MNM MISSED APCH CLIMB GRADIENT.

CHANGES: FREQUENCIES, EDITORIALS.

ATS AIRSPACE CLASSIFICATION: REF ENR 1.4