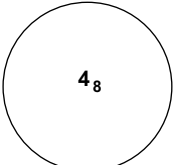
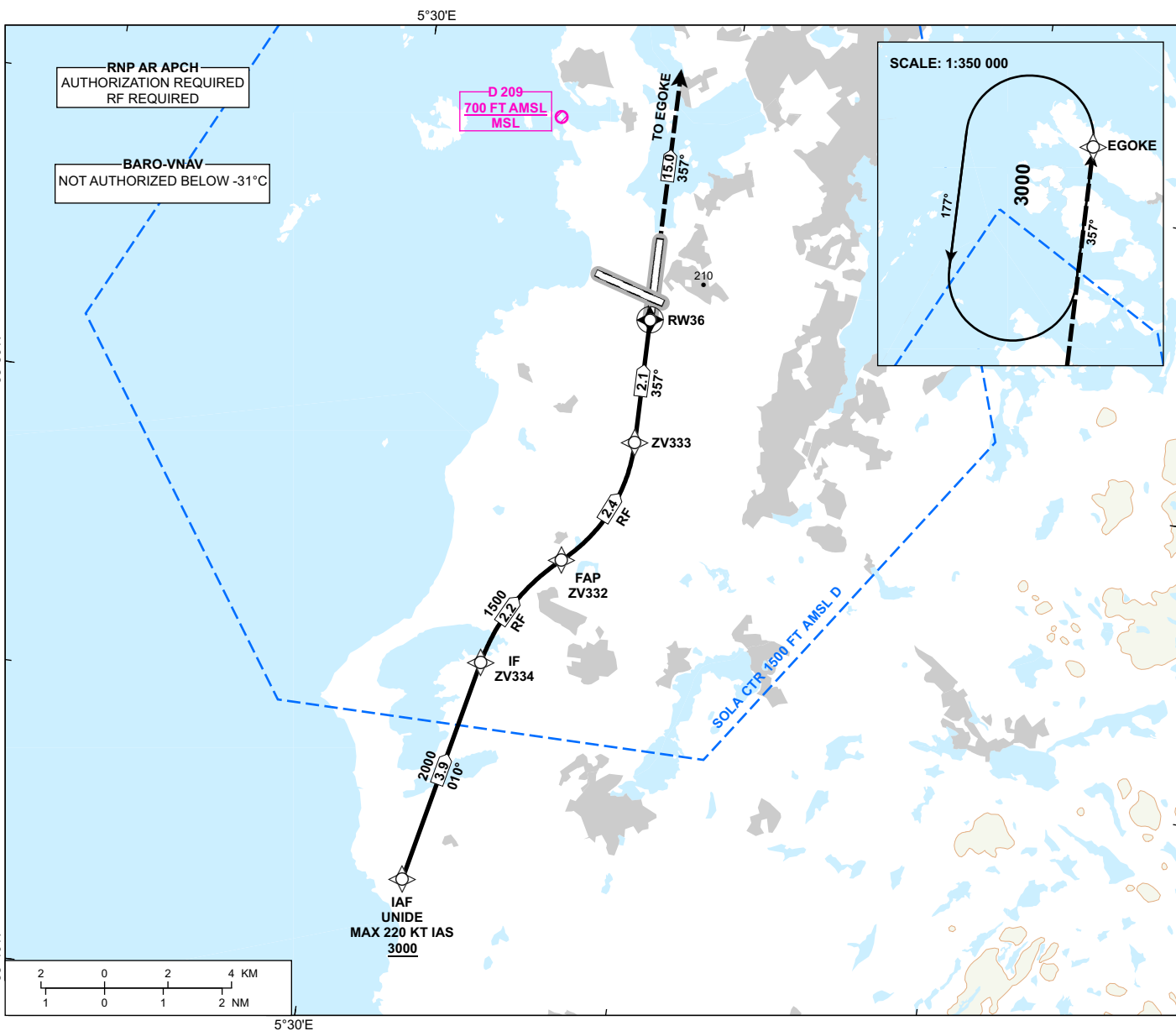


INSTRUMENT APPROACH CHART - ICAO

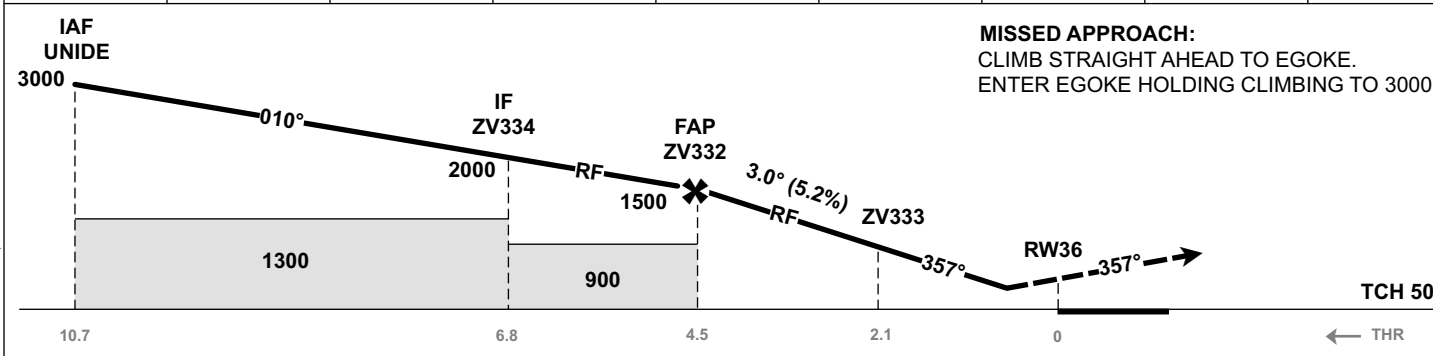
**STAVANGER
SOLA
RNP 0 RWY 36 (AR)**

 MSA 25 NM ARP	ATIS: 126.005	AD ELEV: 30
	APP: 119.605 119.405	THR ELEV: 29
	118.505	HGT RELATED TO THR 36
	TWR: 118.355	CIRCLING HGT RELATED TO AD ELEV
	GND: 121.755	DIST IN NM. ELEV, ALT AND HGT IN FT
	SCALE 1:200 000	VAR 2° E (2020)

TRANSITION ALTITUDE
7000



DIST TO RW36	9	8	7	6	5	4	3	2
ALT (HGT)	-	-	-	-	-	-	-	-



MISSED APPROACH:
CLIMB STRAIGHT AHEAD TO EGOKE.
ENTER EGOKE HOLDING CLIMBING TO 3000.

CAT OF ACFT		A	B	C	D
OCA (H) STRAIGHT-IN	RNP 0.3 (2.5%*)	325 (296)	348 (319)	366 (337)	385 (356)
	RNP 0.3 (5.0%*)	-	335 (306)	345 (316)	366 (337)
CIRCLING		700 (670)		1150 (1120)	1680 (1650)

NOTE: *MNM MISSED APCH CLIMB GRADIENT.

ATS AIRSPACE CLASSIFICATION: REF ENR 1.4

CHANGES: FREQUENCIES, EDITORIALS.