

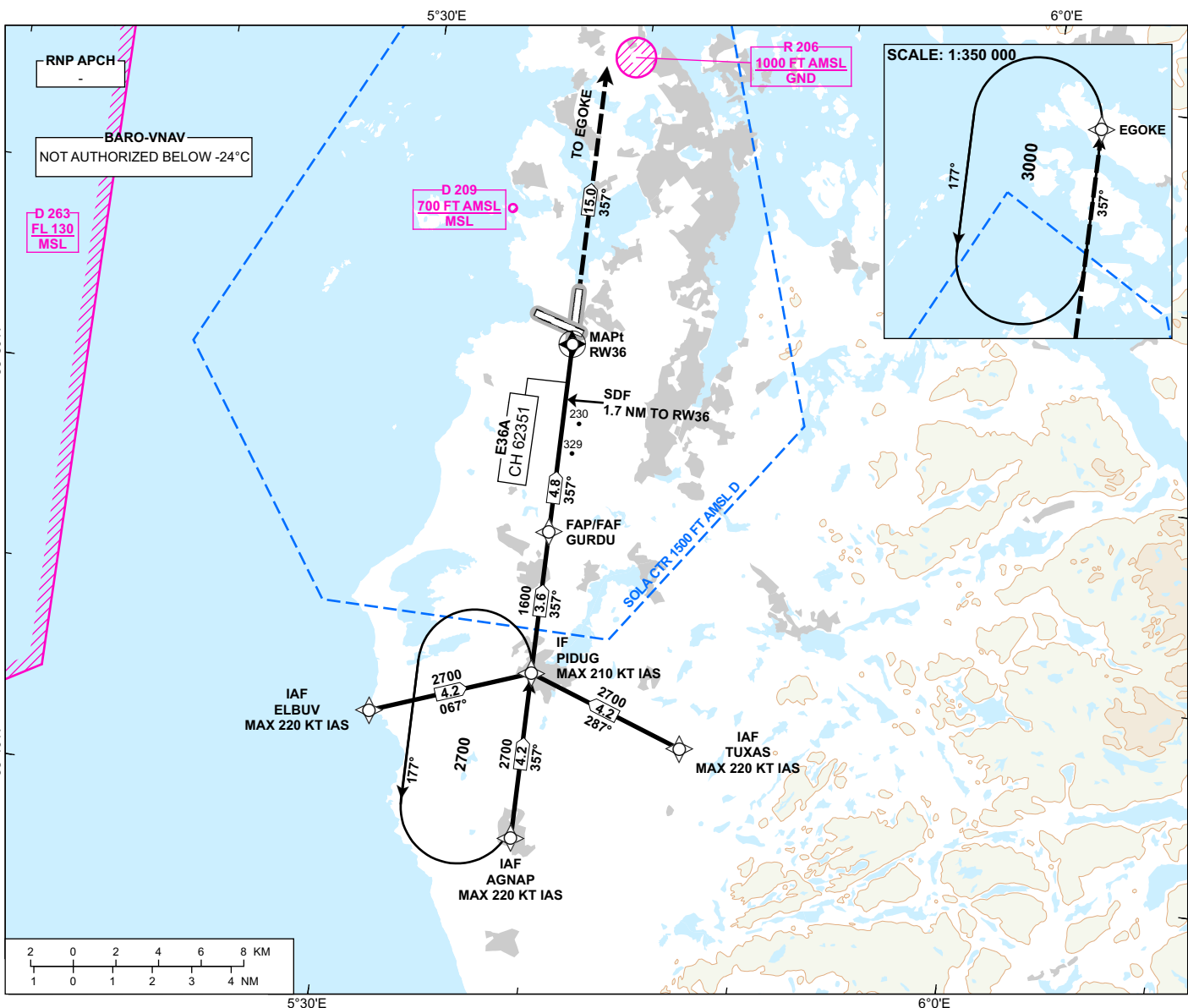
INSTRUMENT APPROACH CHART - ICAO

**STAVANGER
SOLA**

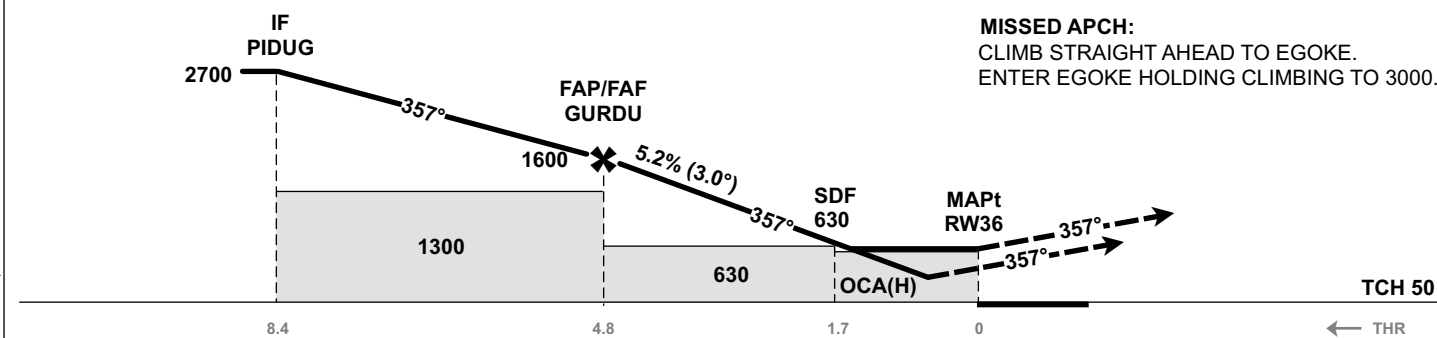
RNP Z RWY 36

TRANSITION ALTITUDE
7000

<div style="border: 1px solid black; border-radius: 50%; width: 40px; height: 40px; display: flex; align-items: center; justify-content: center; margin: 0 auto;"> 4 </div> <p>MSA 25 NM ARP</p>	ATIS: 126.005	AD ELEV: 30
	APP: 119.605 119.405 118.505	THR ELEV: 29
	TWR: 118.355	HGT RELATED TO THR 36
	GND: 121.755	CIRCLING HGT RELATED TO AD ELEV
	DIST IN NM. ELEV, ALT AND HGT IN FT	
	SCALE 1:300 000	VAR 2° E (2020)



DIST TO RW36	9	8	7	6	5	4	3	2
ALT (HGT)	-	-	-	-	-	1360 (1331)	1040 (1011)	720 (691)



CAT OF ACFT		A	B	C	D
OCA (H) STRAIGHT- IN	LPV	257 (228)	265 (236)	275 (246)	285 (256)
	LNAV/VNAV	370 (341)	390 (361)		400 (371)
	LNAV	530 (501)			
CIRCLING		700 (670)	1150 (1120)	1680 (1650)	

NOTE:

CHANGES: FREQUENCIES, EDITORIALS.

ATS AIRSPACE CLASSIFICATION: REF ENR 1.4