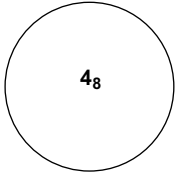
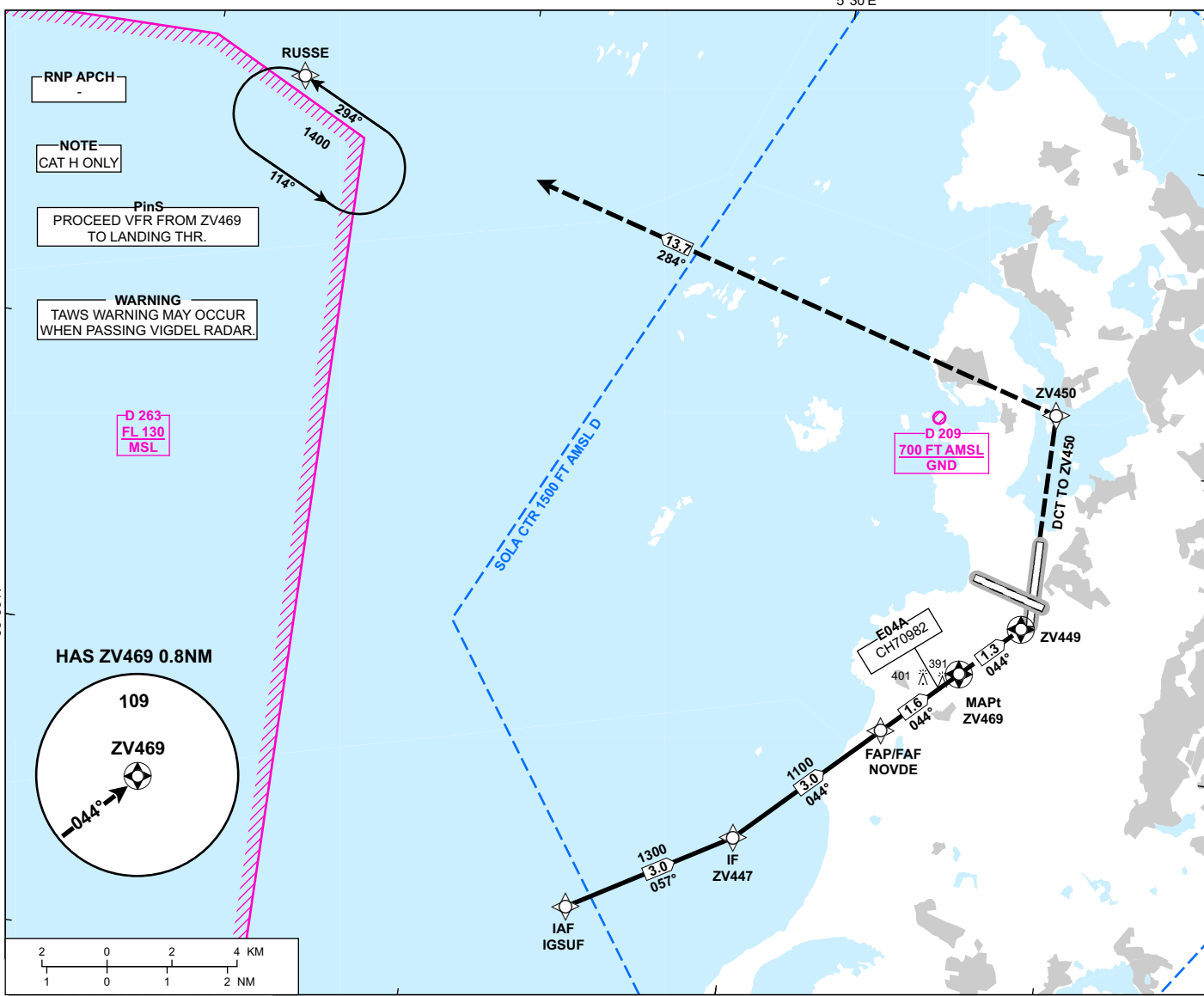


**INSTRUMENT APPROACH CHART - ICAO**

**STAVANGER  
SOLA  
RNP 044**

 <b>MSA 25 NM ARP</b>	ATIS: 126.005	AD ELEV: 30
	APP: 119.605 119.405	THR ELEV: 7
	118.505	HGT RELATED TO THR 10
	TWR: 118.355	CIRCLING HGT RELATED TO AD ELEV
	GND: 121.755	DIST IN NM. ELEV, ALT AND HGT IN FT
	SCALE 1:200 000	VAR 2° E (2020)

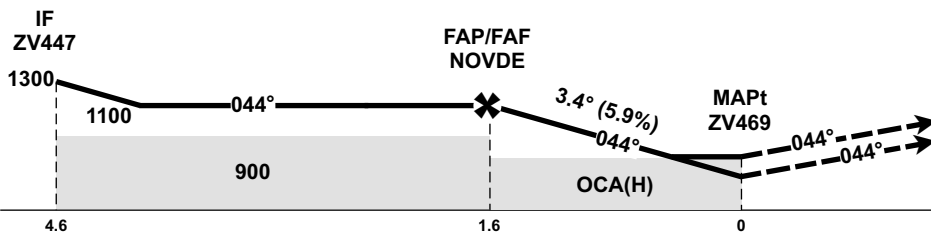
**TRANSITION ALTITUDE  
7000**



<b>DIST TO ZV469</b>	8	7	6	5	4	3	2	1
<b>ALT (HGT)</b>	-	-	-	-	-	-	-	870 (863)

**NOTE:**  
DESCENT GRADIENT CALCULATED FROM NOVDE TO ZV469.

**MISSED APPROACH:**  
CONTINUOUS CLIMB TO 1400.  
TO ZV449. AT ZV449 TURN LEFT DCT ZV450.  
AT ZV450 TURN TO RUSSE.  
ENTER RUSSE HLDG AT 1400.  
**NOTE:**  
EXPECT VECTORING.



CAT OF ACFT		H			
OCA (H) STRAIGHT- IN	LPV 4.2%*	509 (502)	-	-	-
	LNAV 4.2%*	650 (643)	-	-	-
CIRCLING		-	-	-	-

**NOTE:** VISUAL MANOEUVRING REQUIRED. \*MNM MISSED APCH CLIMB GRADIENT.

CHANGES: FREQUENCIES, MISSED APPROACH TEXT.

ATS AIRSPACE CLASSIFICATION: REF ENR 1.4