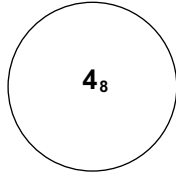
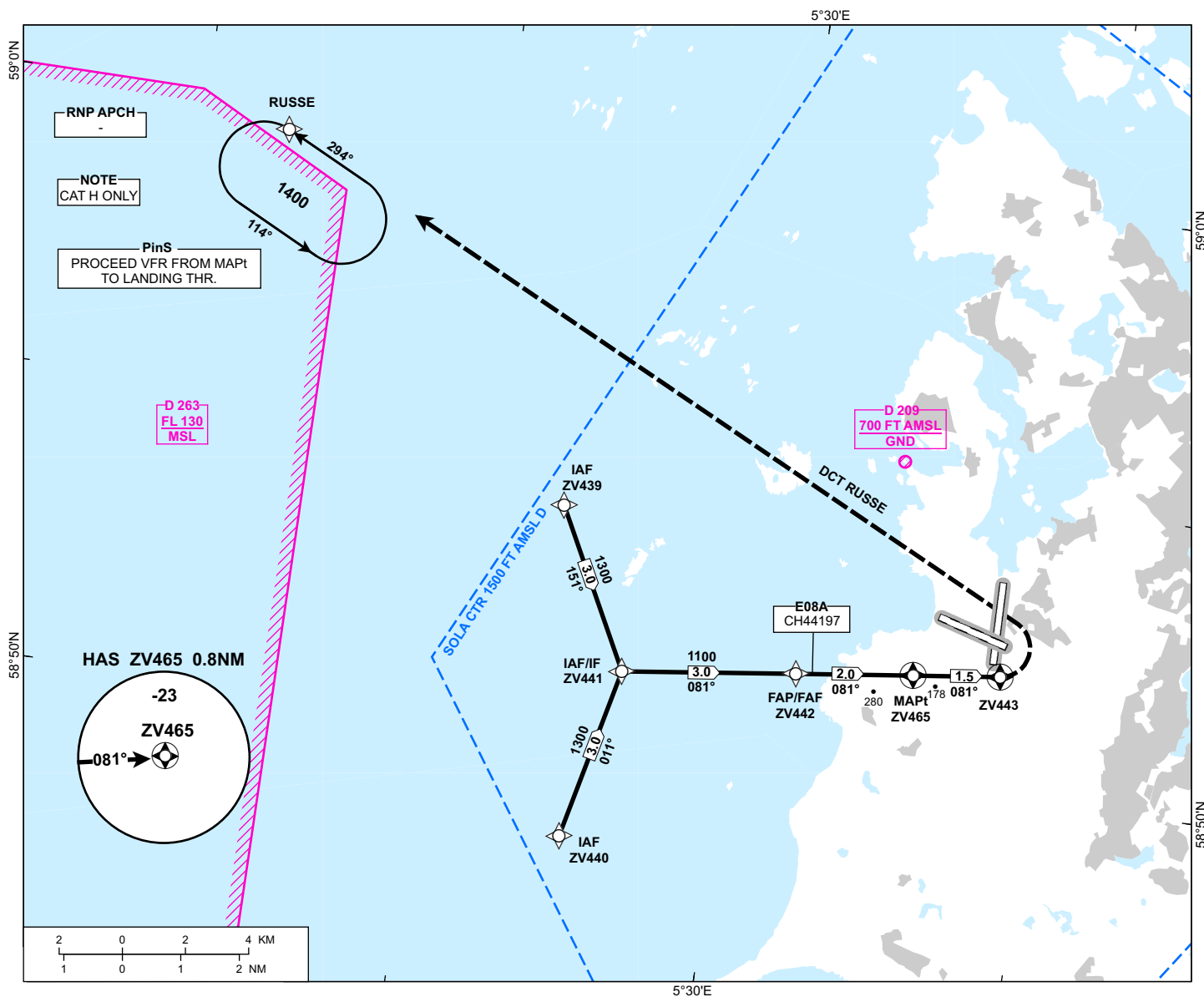


INSTRUMENT APPROACH CHART - ICAO

**STAVANGER
SOLA
RNP 081**

 MSA 25 NM ARP	ATIS: 126.005	AD ELEV: 30
	APP: 119.605 119.405	THR ELEV: 7
	118.505	HGT RELATED TO THR 10
	TWR: 118.355	CIRCLING HGT RELATED TO AD ELEV
	GND: 121.755	DIST IN NM. ELEV, ALT AND HGT IN FT
	SCALE 1:200 000	VAR 2° E (2020)

**TRANSITION ALTITUDE
7000**



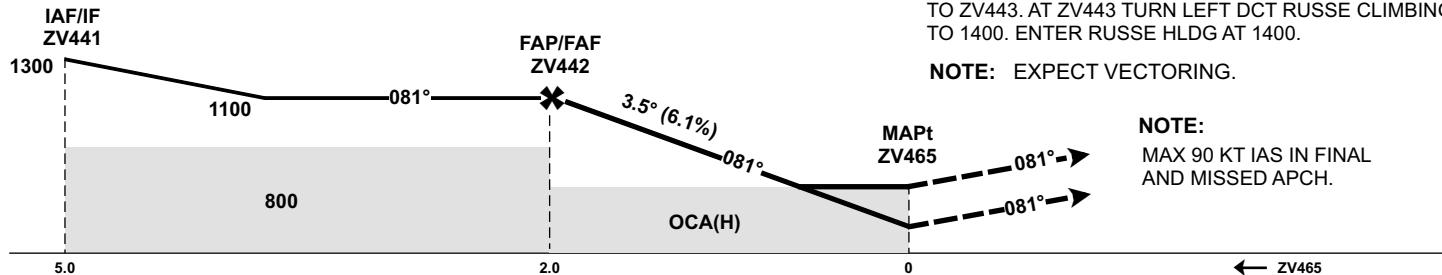
DIST TO ZV465	8	7	6	5	4	3	2	1
ALT (HGT)	-	-	-	-	-	-	-	730 (723)

NOTE: DESCENT GRADIENT CALCULATED FROM ZV442 TO ZV465.

MISSED APPROACH:

TO ZV443. AT ZV443 TURN LEFT DCT RUSSE CLIMBING TO 1400. ENTER RUSSE HLDG AT 1400.

NOTE: EXPECT VECTORING.



NOTE:
MAX 90 KT IAS IN FINAL AND MISSED APCH.

CAT OF ACFT		H			
OCA (H)	LPV 4.2%*	358 (351)	-	-	-
	LNAV 4.2%*	580 (573)	-	-	-
CIRCLING		-	-	-	-

NOTE: VISUAL MANOEUVRING REQUIRED. *MNM MISSED APCH CLIMB GRADIENT.

ATS AIRSPACE CLASSIFICATION: REF ENR 1.4

CHANGES: FREQUENCIES.