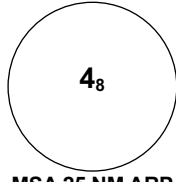


# INSTRUMENT APPROACH CHART - ICAO

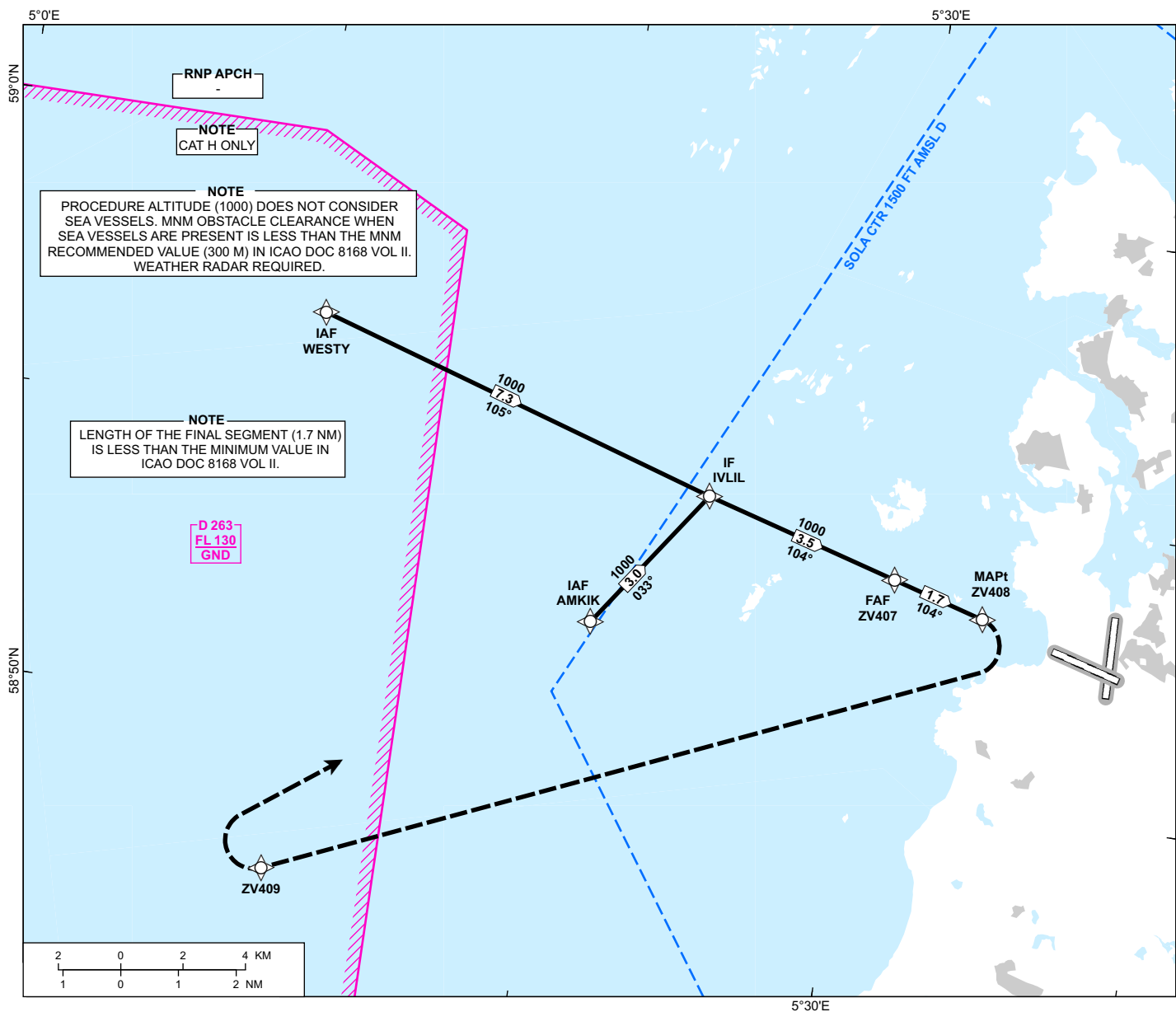
**STAVANGER  
SOLA**

**RNP Y RWY 10**

TRANSITION ALTITUDE  
7000

 <p>MSA 25 NM ARP</p>	ATIS: 126.005	AD ELEV: 30
	APP: 119.605 119.405	THR ELEV: 7
	118.505	HGT RELATED TO THR 10
	TWR: 118.355	CIRCLING HGT RELATED TO AD ELEV
	GND: 121.755	DIST IN NM. ELEV, ALT AND HGT IN FT
SCALE 1:200 000		VAR 2° E (2020)

ATS AIRSPACE CLASSIFICATION: REF ENR 1.4

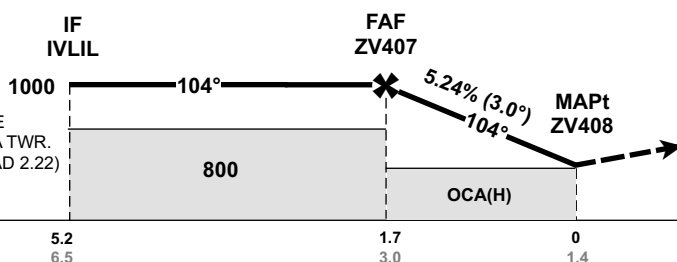


DIST TO ZV408	8	7	6	5	4	3	2	1
ALT (HGT)	-	-	-	-	-	-	-	790 (783)

**NOTE:**  
APCH TO RWY 10 AFTER PASSING MAPt SHALL FOLLOW PAPI RWY 10. LANDING SHALL BE EXECUTED W OF TWY E2. DISCONTINUATION OF APCH AFTER PASSING MAPt SHALL BE EXECUTED W OF THR RWY 10 WITH VISUAL REFERENCE TO THE TERRAIN AND IN ACCORDANCE WITH CLEARANCE ISSUED BY SOLA TWR. (REF AIP AD 2 ENZV 2-1 AND ENZV AD 2.22)

**MISSED APPROACH:**  
CONTINUOUS CLIMB TO 1000. AT MAPt TURN RIGHT DCT ZV409. AT ZV409 TURN RIGHT DCT AMKIK MAKE A NEW APCH.

**NOTE:**  
EXPECT VECTORING.



CAT OF ACFT		H			
OCA (H) STRAIGHT-IN	LNAV 4.2%*	470 (463)	-	-	-
		-	-	-	-
CIRCLING		700 (670)	-	-	-

**NOTE:** CIRCLING W OF RWY 18/36 ONLY. \*MNM MISSED APCH CLIMB GRADIENT.

CHANGES: FREQUENCIES, MISSED APCH TEXT.