

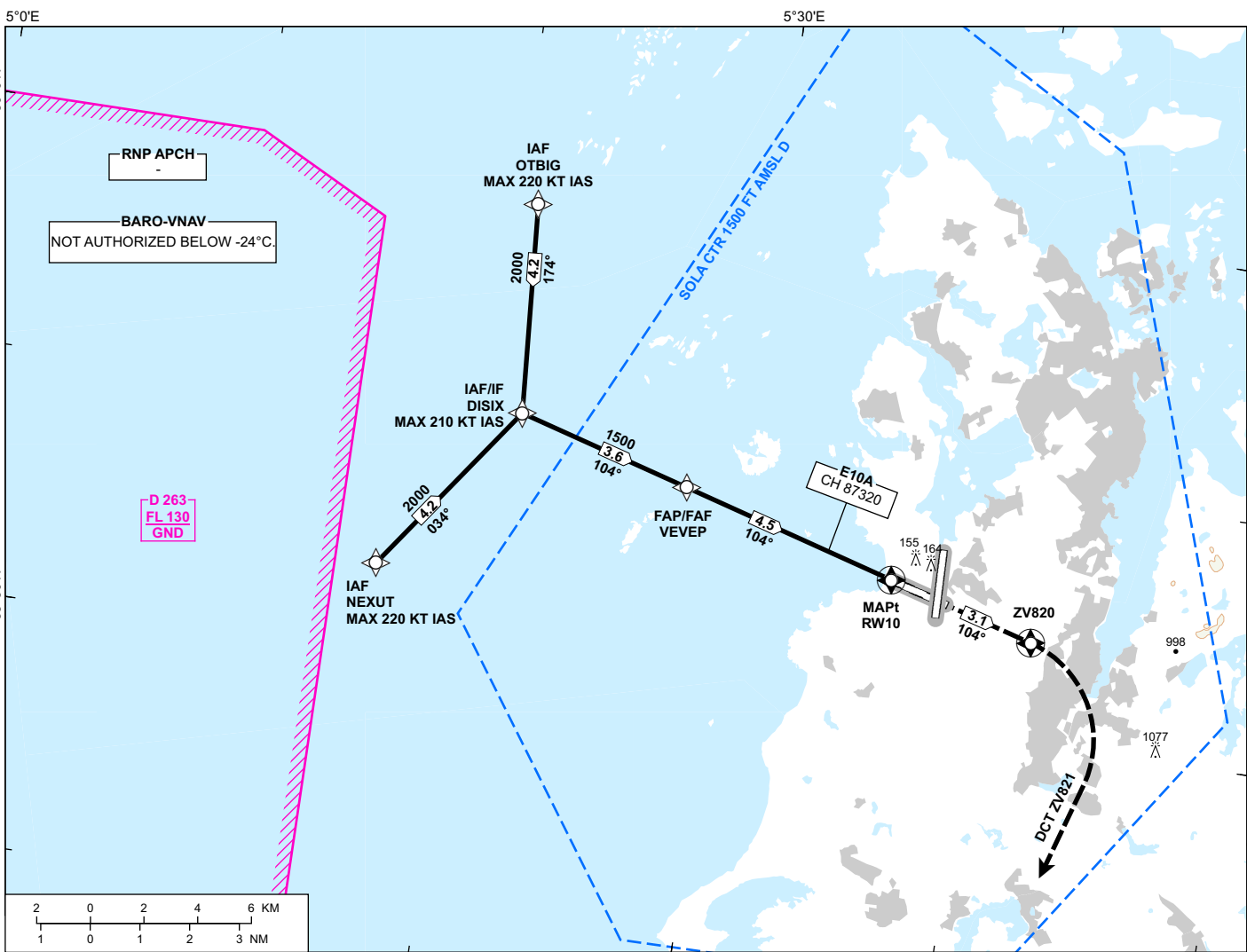
INSTRUMENT APPROACH CHART - ICAO

STAVANGER SOLA

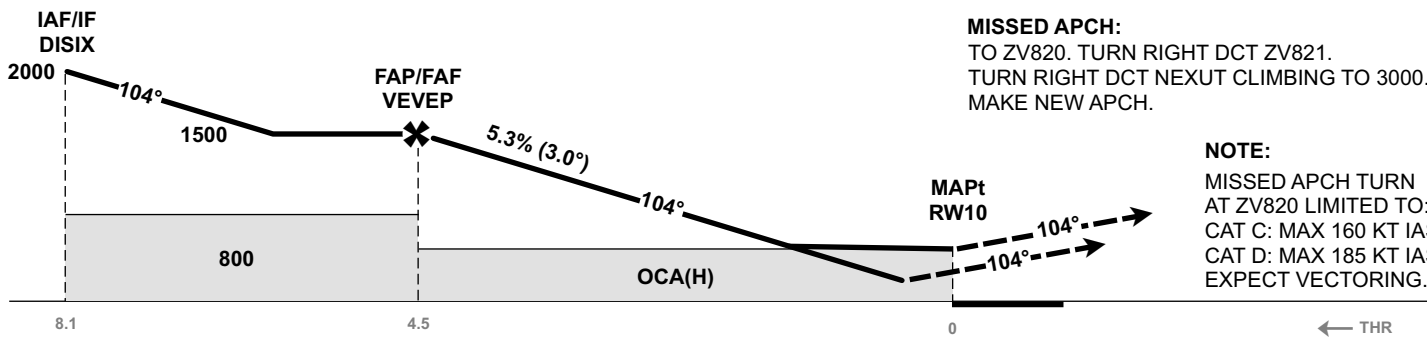
RNP Z RWY 10

**TRANSITION ALTITUDE
7000**

<div style="border: 1px solid black; border-radius: 50%; width: 40px; height: 40px; display: flex; align-items: center; justify-content: center; margin: 0 auto;"> 4₈ </div> <p>MSA 25 NM ARP</p>	ATIS: 126.005	AD ELEV: 30
	APP: 119.605 119.405	THR ELEV: 7
	118.505	HGT RELATED TO THR 10
	TWR: 118.355	CIRCLING HGT RELATED TO AD ELEV
	GND: 121.755	DIST IN NM. ELEV, ALT AND HGT IN FT
SCALE 1:250 000		VAR 2° E (2020)



DIST TO RW10	9	8	7	6	5	4	3	2
ALT (HGT)	-	-	-	-	-	1340 (1333)	1020 (1013)	700 (693)



MISSED APCH:
TO ZV820. TURN RIGHT DCT ZV821.
TURN RIGHT DCT NEXUT CLIMBING TO 3000.
MAKE NEW APCH.

NOTE:
MISSED APCH TURN
AT ZV820 LIMITED TO:
CAT C: MAX 160 KT IAS.
CAT D: MAX 185 KT IAS.
EXPECT VECTORING.

CAT OF ACFT		A	B	C	D
OCA (H) STRAIGHT- IN	LPV 2.5%*	201 (194)	214 (207)	223 (216)	233 (226)
	LPV 3.0%*	189 (182)	202 (195)	210 (203)	220 (213)
	LNAV/VNAV 2.5%*	330 (323)	370 (363)	410 (403)	440 (433)
	LNAV/VNAV 3.1%*	260 (253)	270 (263)	290 (283)	320 (313)
	LNAV 2.5%*	-	470 (463)	-	480 (473)
CIRCLING		700 (670)		1150 (1120)	1680 (1650)

NOTE: *MNM MISSED APCH CLIMB GRADIENT.

CHANGES: FREQUENCIES, EDITORIALS.

ATS AIRSPACE CLASSIFICATION: REF ENR 1.4