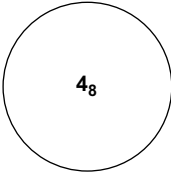


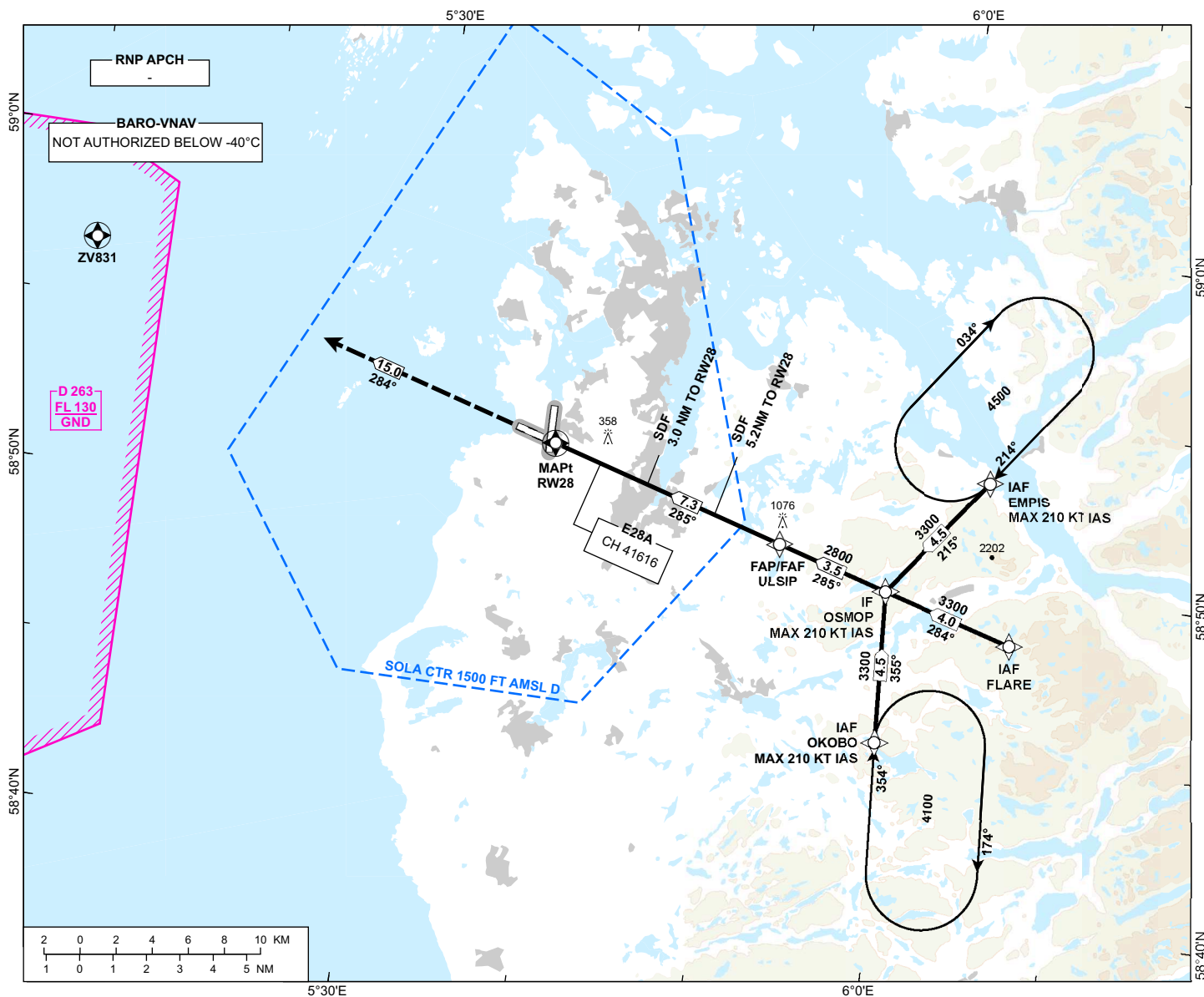
INSTRUMENT APPROACH CHART - ICAO

**STAVANGER
SOLA
RNP RWY 28**

 MSA 25 NM ARP	ATIS: 126.005	AD ELEV: 30
	APP: 119.605 119.405	THR ELEV: 27
	118.505	HGT RELATED TO THR 28
	TWR: 118.355	CIRCLING HGT RELATED TO AD ELEV
	GND: 121.755	DIST IN NM. ELEV, ALT AND HGT IN FT
	SCALE 1:350 000	VAR 2°E (2020)

**TRANSITION ALTITUDE
7000**

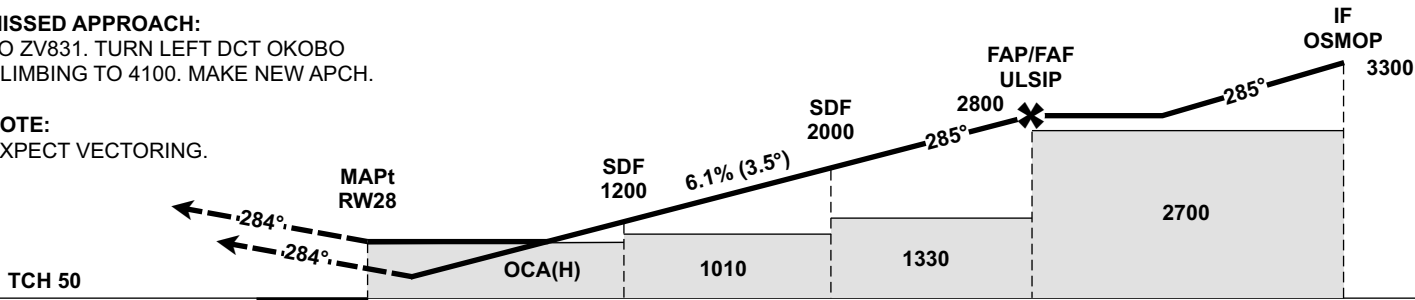
ATS AIRSPACE CLASSIFICATION: REF ENR 1.4



DIST TO RW28	9	8	7	6	5	4	3	2
ALT (HGT)	-	-	2680 (2653)	2310 (2283)	1940 (1913)	1570 (1543)	1200 (1173)	820 (793)

MISSED APPROACH:
TO ZV831. TURN LEFT DCT OKOBO
CLIMBING TO 4100. MAKE NEW APCH.

NOTE:
EXPECT VECTORING.



THR	→	0	3.0	5.2	7.3	10.8
CAT OF ACFT		A	B	C	D	
OCA (H) STRAIGHT- IN	LPV	338 (311)	352 (325)	362 (335)	374 (347)	
	LNAV/VNAV	470 (443)	490 (463)	500 (473)	510 (483)	
	LNAV	580 (553)				
CIRCLING		700 (670)		1150 (1120)	1680 (1650)	

NOTE:

CHANGES: FREQUENCIES, EDITORIALS.