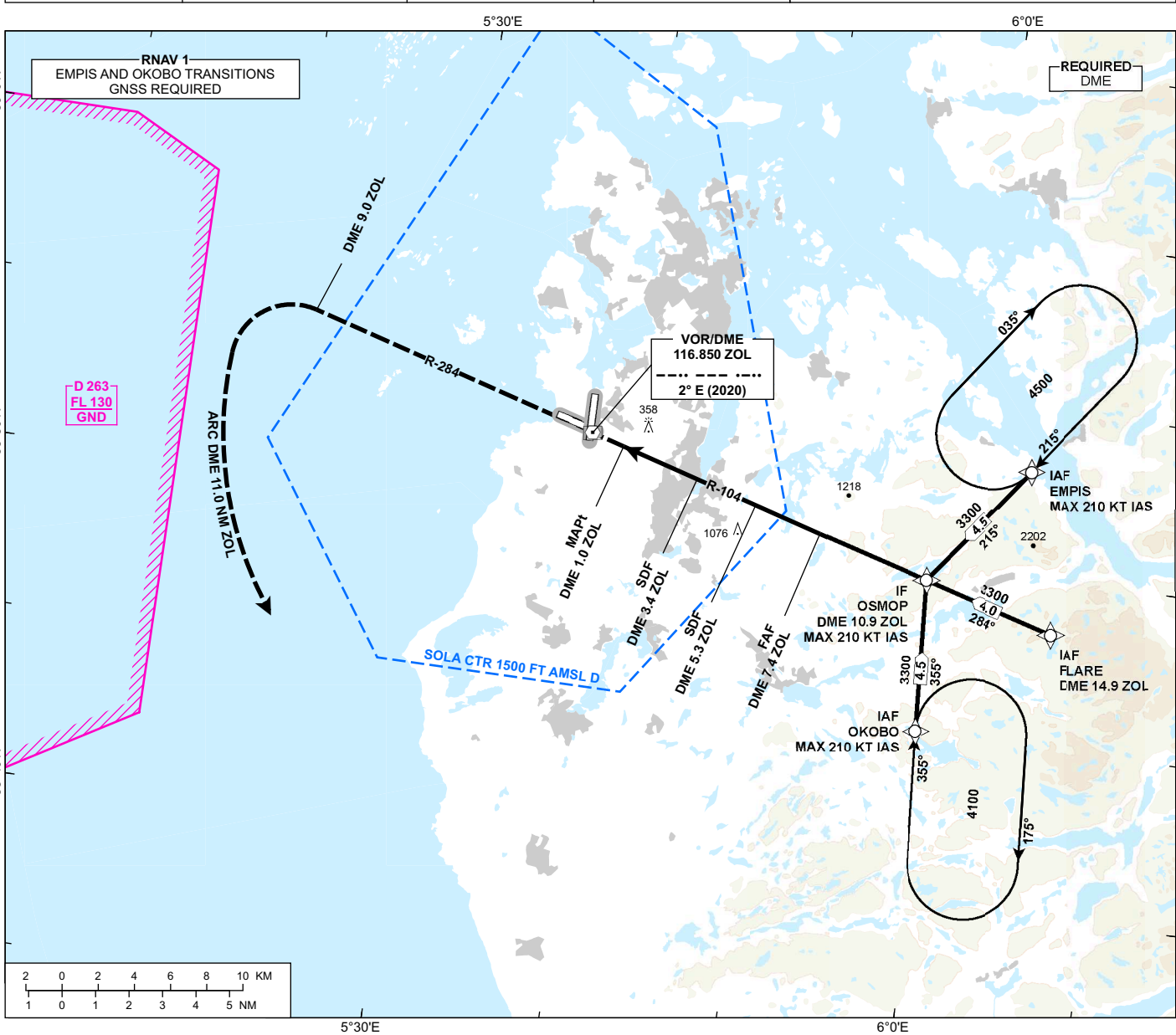


INSTRUMENT APPROACH CHART - ICAO

**STAVANGER
SOLA
VOR RWY 28**

ATIS: 126.005	AD ELEV: 30
APP: 119.605 119.405	THR ELEV: 27
118.505	HGT RELATED TO THR 28
TWR: 118.355	CIRCLING HGT RELATED TO AD ELEV
GND: 121.755	DIST IN NM. ELEV, ALT AND HGT IN FT
SCALE 1:350 000	VAR 2°E (2020)

TRANSITION ALTITUDE
7000

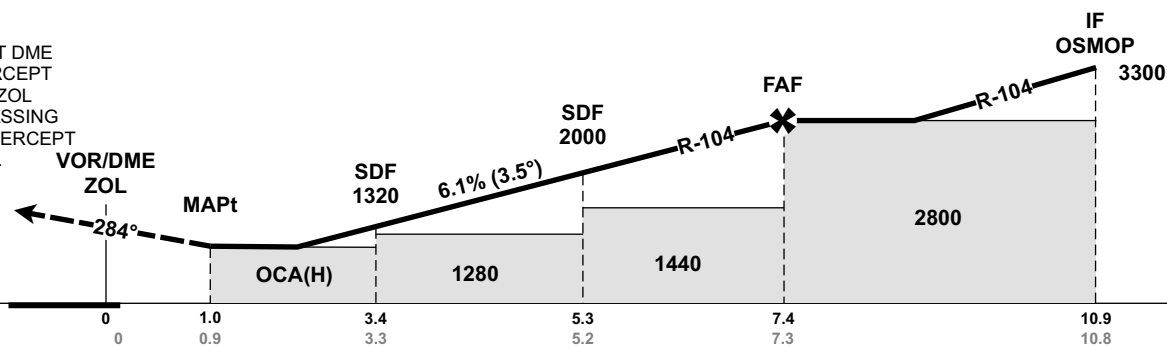


DIST TO ZOL	9	8	7	6	5	4	3	2
ALT (HGT)	-	-	2650 (2623)	2280 (2253)	1910 (1883)	1540 (1513)	1170 (1143)	800 (773)

MISSED APPROACH:

CLIMB ON R-104/R-284 ZOL AT DME 9.0 ZOL TURN LEFT TO INTERCEPT AND FOLLOW DME ARC 11.0 ZOL CLIMBING TO 3000. WHEN PASSING R-114 ZOL TURN LEFT TO INTERCEPT R-104 ZOL. MAKE NEW APCH.

NOTE:
EXPECT VECTORING.



DME (ZOL) →	0	1.0	3.4	5.3	7.4	10.9
THR →	0	0.9	3.3	5.2	7.3	10.8
CAT OF ACFT		A	B	C	D	
OCA (H) STRAIGHT-IN		-	-	600 (573)	-	-
CIRCLING			700 (670)		1150 (1120)	1680 (1650)

NOTE: