

| | | |
|---------------------------------------|---|---|
| AERODROME CHART ICAO | ARP 630643N 0074934E AD ELEV 205 | KRISTIANSUND, KVERNBERGET NORWAY |
|---------------------------------------|---|---|

NOTES - REMARKS

- APCH LGT RWY 07: INNERMOST LGT 30 M FM THR. XBAR AT 450, 300 AND 150 M. OMNIDIRECTIONAL LIL ON CL AND SECOND XBAR. SEQUENCED FLASHING LGTS 630 M, ON EXTENDED CL.

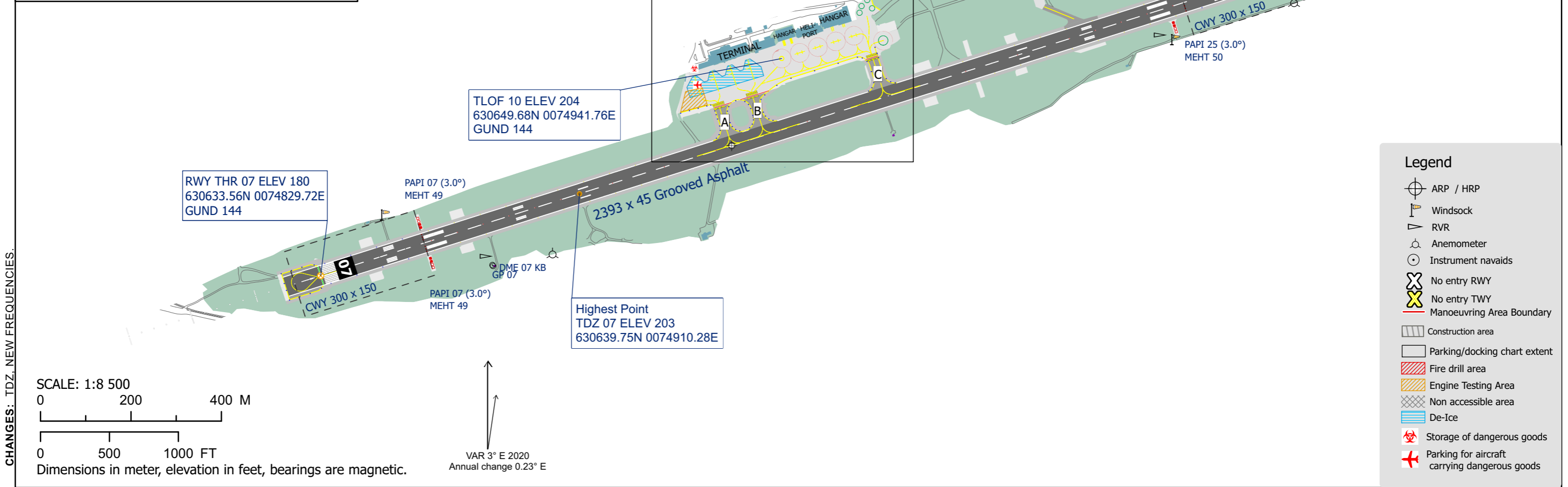
- APCH LGT RWY 25: INNERMOST LGT 30 M FM THR. XBAR AT 600, 450, 300 AND 150 M. OMNIDIRECTIONAL LIL ON CL AND XBAR. SEQUENCED FLASHING LGTS 600 M, ON EXTENDED CL. HELICOPTER LEAD-IN LGT ON STAVBREKKA, ORNBERGET, KOLVIKA SE, SANDVIKHAUGEN.

- PAPI RWY 07: WHEN REACHING DH ACFT ESTABLISHED ON ILS GP WILL GET A "TOO HIGH" INDICATION FROM PAPI.

- PAPI RWY 25: RESTRICTED TO MAX 6 NM FM THR.

Runway strength, REF AD 2.12
Apron surface and strength, REF AD 2.8
Taxiway width, surface and strength, REF AD 2.8
Declared distances, REF AD 2.13

| RUNWAY | | COM | |
|--------|--------|------|-------------|
| RWY | BRG | | |
| 07 | 068.76 | ATIS | 135.080 MHZ |
| 25 | 248.80 | TWR | 118.305 MHZ |



CHANGES: TDZ, NEW FREQUENCIES.