

VFR TRAFFIC PATTERN/ROUTES HELICOPTER

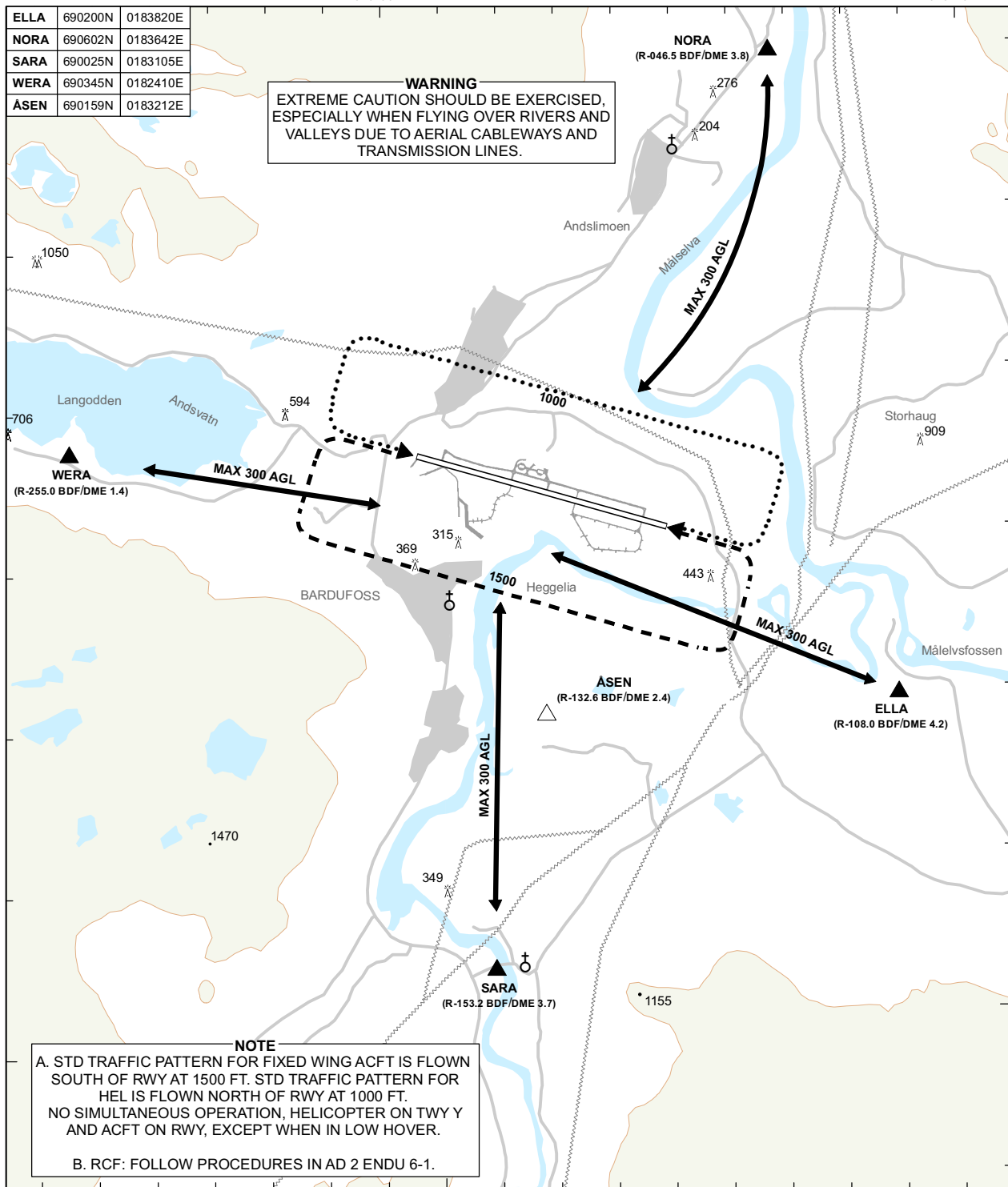
PLAN VIEW SCALE: 1:70 000

ATIS: 129.730	ELEV, ALT AND HGT IN FT
APP: 118.805 125.855	OBSTACLES LESS THAN 100 FT GND ARE NORMALLY NOT SHOWN
TWR: 118.105	
CLR: 122.100	

BARDUFOSS
BARDUFOSS
 NORWAY

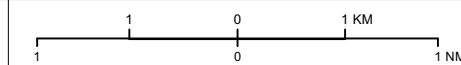
ELLA	690200N	0183820E
NORA	690602N	0183642E
SARA	690025N	0183105E
WERA	690345N	0182410E
ASEN	690159N	0183212E

WARNING
 EXTREME CAUTION SHOULD BE EXERCISED,
 ESPECIALLY WHEN FLYING OVER RIVERS AND
 VALLEYS DUE TO AERIAL CABLEWAYS AND
 TRANSMISSION LINES.



ALTITUDE RESTRICTIONS DO NOT APPLY FOR HELICOPTERS USING RWY FOR TKOF AND LDG. THOSE USING RWY FOR TKOF AND LDG SHALL PROCEED ACCORDING TO VFR ROUTES LIGHT AIRCRAFT.

PAPI RWY 10: DUAL 4.0°, MEHT 51 FT.
 PAPI RWY 28: DUAL 3.4°, MEHT 45 FT.



ATS AIRSPACE CLASSIFICATION: REF ENR 1.4
 LEGENDS: REF GEN 2.3

CHANGES:FREQ, OBST SELECTION, EDITORIALS.