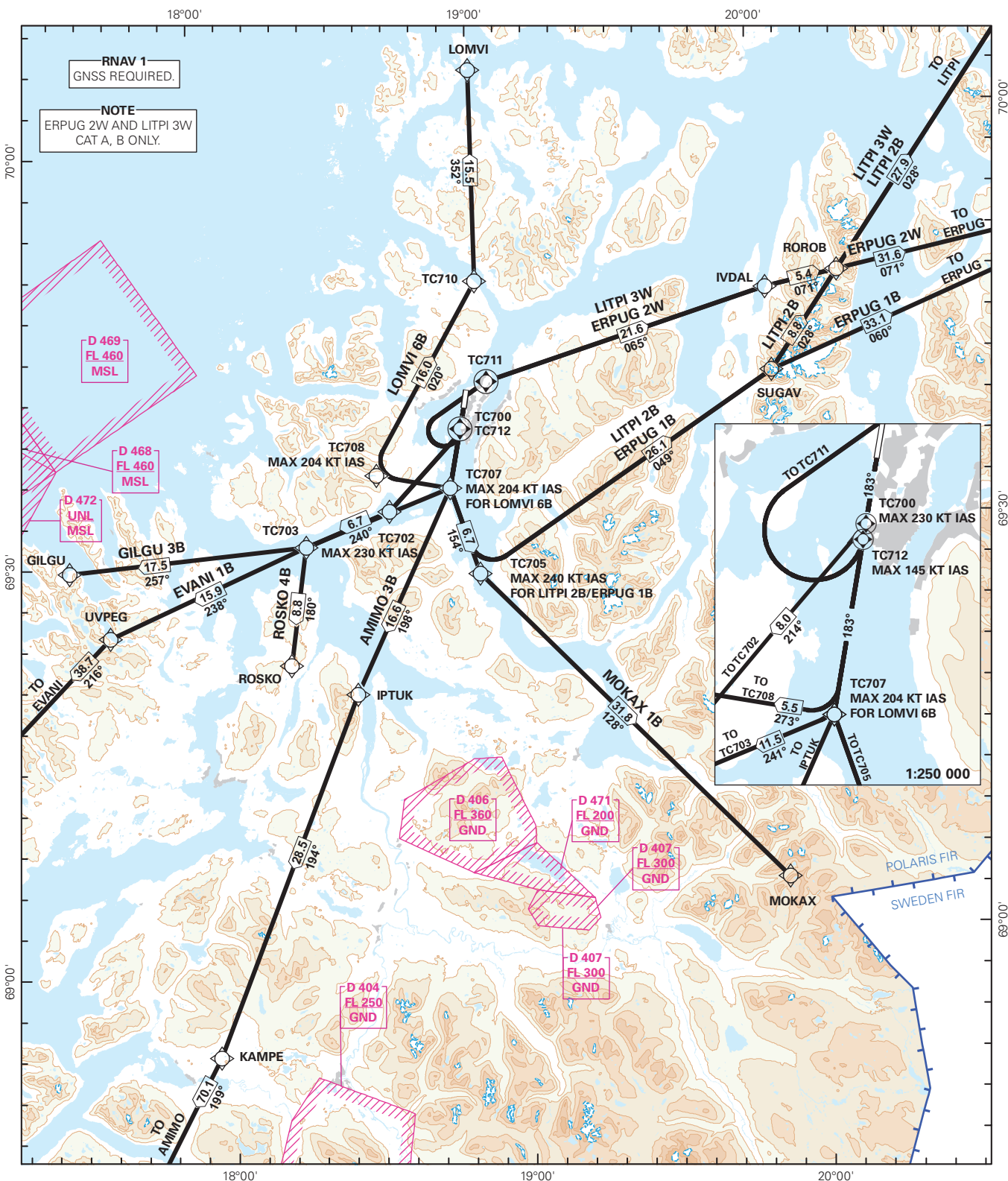


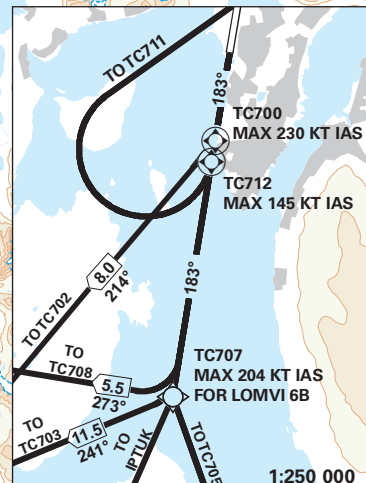
STANDARD DEPARTURE CHART INSTRUMENT - ICAO (RNAV)

<p>MSA 25 NM ARP</p>	ATIS: 126.130	ALT AND ELEV ARE IN FT DIST IN NM		<b>TROMSØ/LANGNES</b> <b>RNAV RWY 18</b> <b>NORWAY</b>	
	APP: 123.755				
	TWR: 118.305	1:800 000	VAR: 10° E (2020)	TA 7000	
	AMIMO 3B, ERPUG 1B, ERPUG 2W, EVANI 1B, GILGU 3B, LITPI 2B, LITPI 3W, LOMVI 6B, MOKAX 1B, ROSKO 4B				



RNAV 1  
GNSS REQUIRED.

NOTE  
ERPUG 2W AND LITPI 3W  
CAT A, B ONLY.



CHANGES: FREQUENCIES.

SID DESCRIPTION OVERLEAF  
DESCRIPTION OF WAYPOINTS, REF ENR 4.4

ATS AIRSPACE CLASSIFICATIONS: REF ENR 1.4  
LEGEND: REF GEN 2.3

