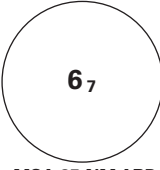
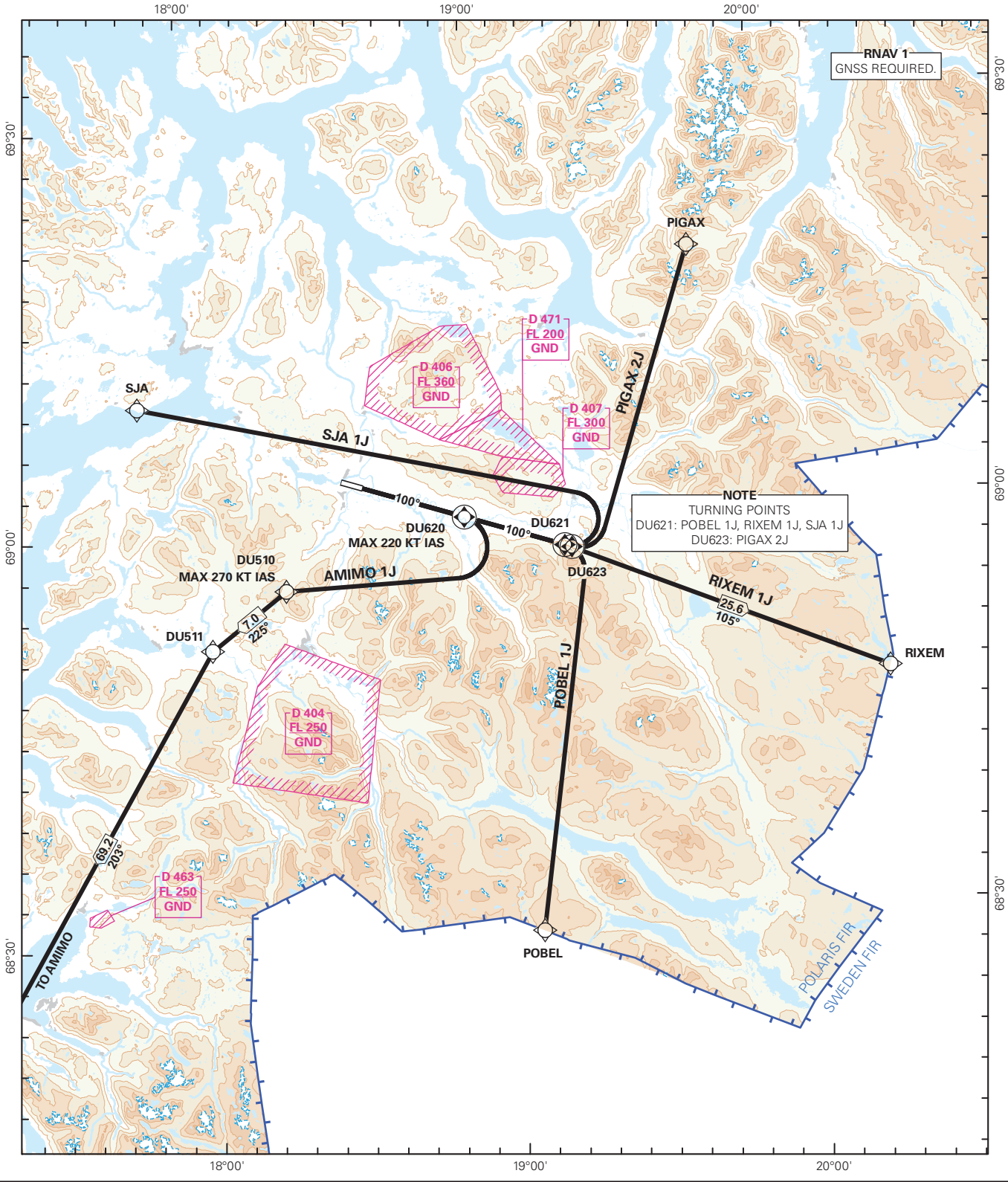


STANDARD DEPARTURE CHART INSTRUMENT - ICAO (RNAV)

	ATIS: 129.730	ALT AND ELEV ARE IN FT DIST IN NM		<b>BARDUFOSS</b>  <b>RWY 10</b>  <b>NORWAY</b>  <b>AMIMO 1J, PIGAX 2J, POBEL 1J, RIXEM 1J, SJA 1J</b>
	APP: 118.805 125.855			
	TWR: 118.105			
	CLR: 122.100			
	1:800 000	VAR: 9° E (2020)	TA 7000	



CHANGES: FREQUENCIES, EDITORIALS.

SID DESCRIPTION OVERLEAF  
DESCRIPTION OF WAYPOINTS, REF ENR 4.4

ATS AIRSPACE CLASSIFICATIONS: REF ENR 1.4  
LEGEND: REF GEN 2.3

