

**INSTRUMENT APPROACH CHART - ICAO PLAN VIEW SCALE: 1:450 000**

BARDUFOSS

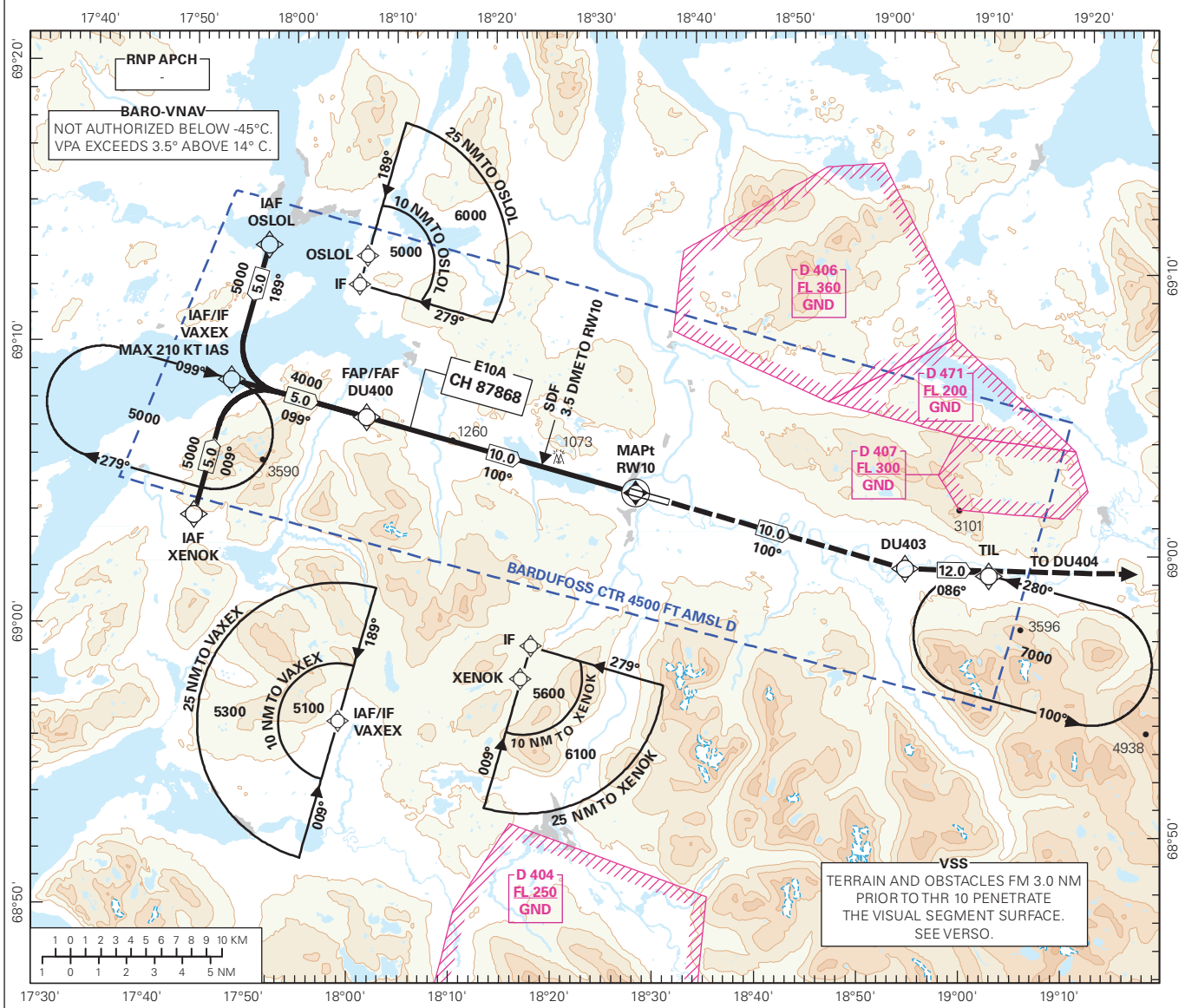
**BARDUFOSS**

**RNP RWY 10**

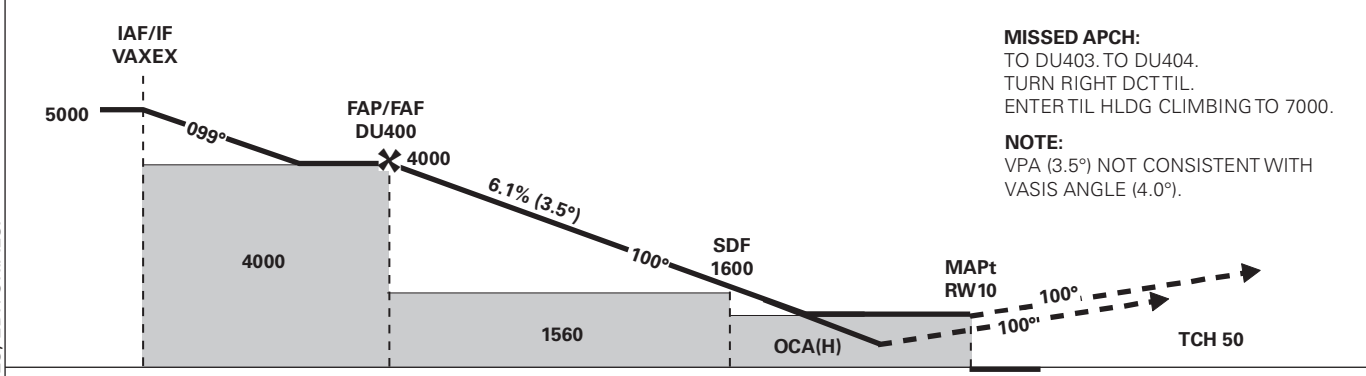
**TRANSITION ALTITUDE  
7000**

ATIS: 129.730	AD ELEV: 254		
APP: 118.805 125.855	THR ELEV: 253	DIST IN NM	
TWR: 118.105	HGT RELATED TO THR RWY 10	ELEV, ALT AND HGT IN FT	
CLR: 122.100	CIRCLING HGT RELATED TO AD ELEV		
BEARINGS ARE MAGNETIC - VAR 9 ° E (2020)			

AIS AIRSPACE CLASSIFICATION: REF ENR 1.4



DIST TO RWY10	10	9	8	7	6	5	4	3
ALT (HGT)	-	3640 (3387)	3270 (3017)	2900 (2647)	2530 (2277)	2160 (1907)	1790 (1537)	1420 (1167)



**MISSED APCH:**  
TO DU403. TO DU404.  
TURN RIGHT DCT TIL.  
ENTER TIL HLDG CLIMBING TO 7000.

**NOTE:**  
VPA (3.5°) NOT CONSISTENT WITH  
VASIS ANGLE (4.0°).

CAT OF ACFT	A				B		C		D	
	1273 (1020)	1047 (794)	1059 (806)	1270 (1017)	1297 (1044)	1071 (818)	1320 (1067)	1250 (997)	1590 (1337)	
OCA(H) STRAIGHT - IN	LPV (2.5%)*	1273 (1020)	1047 (794)	1059 (806)	1297 (1044)	1071 (818)	1320 (1067)	1250 (997)	1590 (1337)	
	LPV (3.0%)*	1273 (1020)	1047 (794)	1059 (806)	1297 (1044)	1071 (818)	1320 (1067)	1250 (997)	1590 (1337)	
	LNAV/VNAV (2.5%)*	1273 (1020)	1047 (794)	1059 (806)	1297 (1044)	1071 (818)	1320 (1067)	1250 (997)	1590 (1337)	
	LNAV/VNAV (3.0%)*	1273 (1020)	1047 (794)	1059 (806)	1297 (1044)	1071 (818)	1320 (1067)	1250 (997)	1590 (1337)	
CIRCLING	1700 (1446)		1760 (1506)		2240 (1986)		3780 (3526)			

NOTE: CIRCLING S OF AD ONLY. \*MNM MISSED APCH CLIMB GRADIENT.

CHANGES: FREQUENCIES, EDITORIALS.