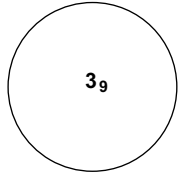
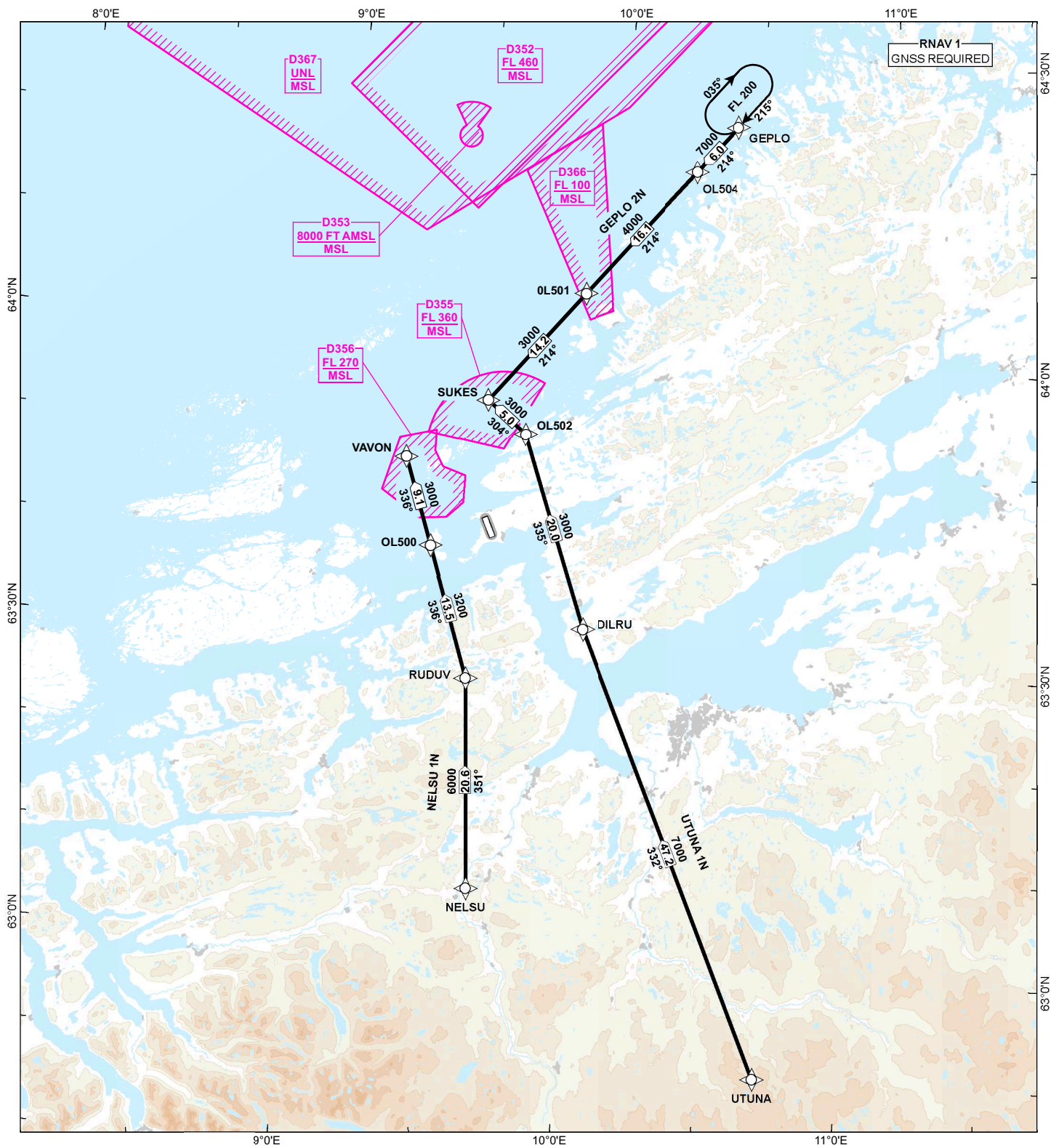


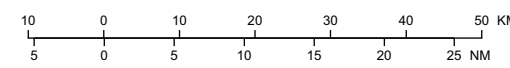
STANDARD ARRIVAL CHART - INSTRUMENT (STAR) - ICAO

 <p>MSA 25 NM ARP</p>	<p>ATIS: 119.330</p> <p>APP: 118.255 126.205</p> <p>TWR: 118.705</p>	<p>ALT AND ELEV ARE IN FT</p> <p>DIST IN NM</p>		<p>ØRLAND (ENOL)</p> <p>RNAV RWY 15</p>	
		1:1 000 000	VAR 4° E (2020)		TA 7000
	<p>GEPLO 2N, NELSU 1N, UTUNA 1N</p>				



ROUTE AND WAYPOINT DESCRIPTIONS ON THE SUCCEEDING PAGES

ATS AIRSPACE CLASSIFICATIONS: REF ENR 1.4
LEGEND: REF GEN 2.3



CHANGES: FREQUENCIES, EDITORIALS.