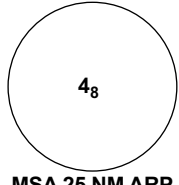


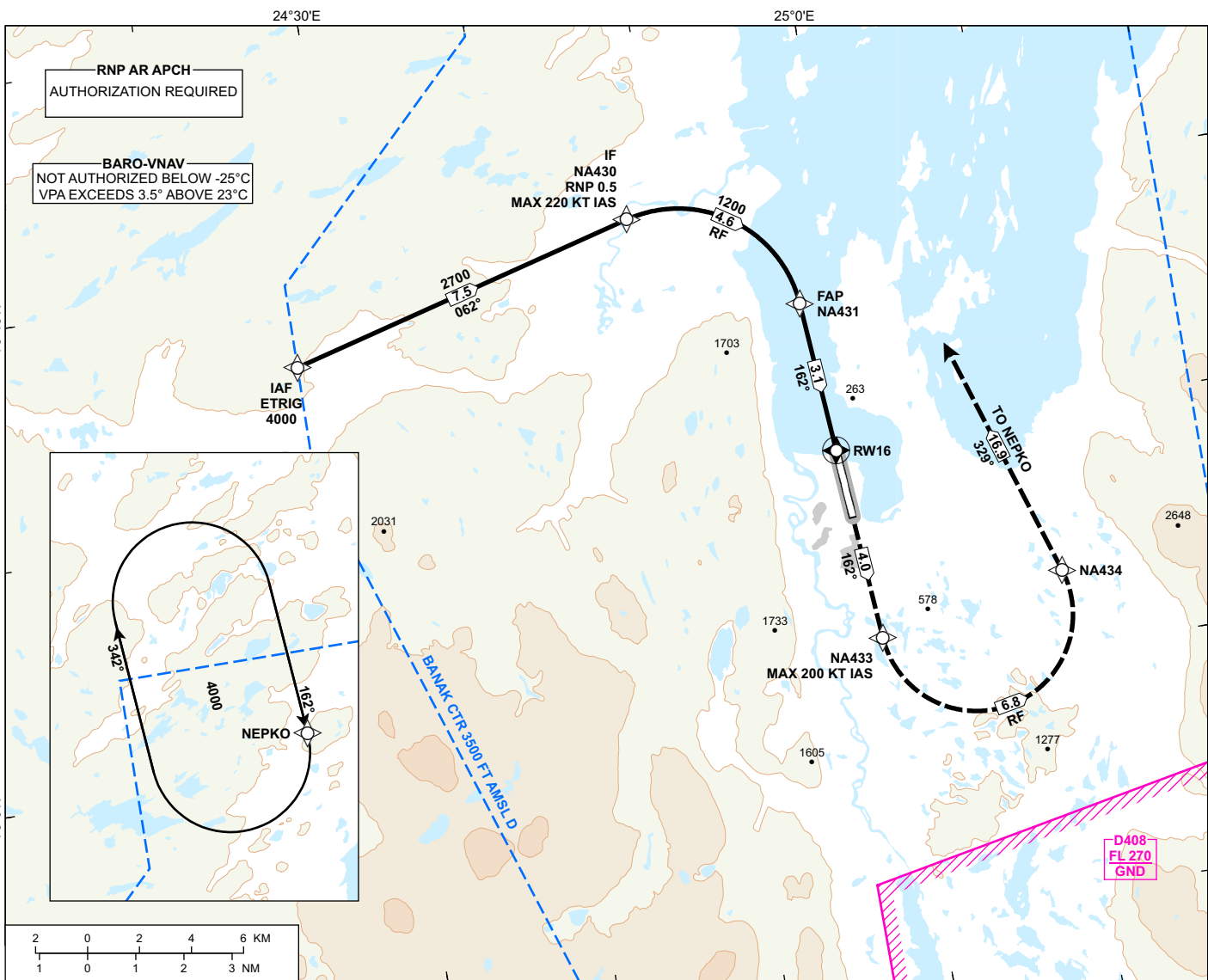
**INSTRUMENT APPROACH CHART - ICAO**

**LAKSELV  
BANAK**

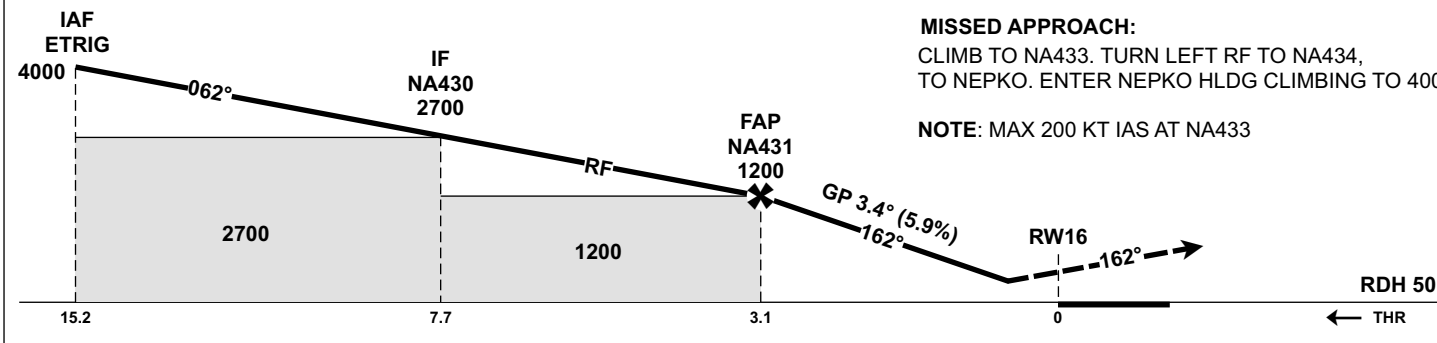
**RNP W RWY 16 (AR)**

TRANSITION ALTITUDE  
7000

 <p>MSA 25 NM ARP</p>	ATIS: 136.330	AD ELEV: 26
	TWR: 118.905 257.800	THR ELEV: 16
		HGT RELATED TO THR 16
		CIRCLING HGT RELATED TO AD ELEV
		DIST IN NM. ELEV, ALT AND HGT IN FT
	SCALE 1:250 000	VAR 13° E (2020)



DIST TO RW16	9	8	7	6	5	4	3	2
ALT (HGT)	-	-	-	-	-	-	-	-



**MISSED APPROACH:**  
CLIMB TO NA433. TURN LEFT RF TO NA434, TO NEPKO. ENTER NEPKO HLDG CLIMBING TO 4000.  
**NOTE:** MAX 200 KT IAS AT NA433

CAT OF ACFT		A	B	C	D
OCA (H) STRAIGHT- IN	RNP 0.2 3.7%*	234 (218)	246 (230)	257 (241)	268 (252)
	RNP 0.3 3.0%*	448 (432)	459 (443)	470 (454)	481 (465)
	RNP 0.3 2.5%*	618 (602)	640 (624)	662 (646)	681 (665)
CIRCLING		-	-	-	-

**NOTE:** \* MNM MISSED APCH CLIMB GRADIENT.

CHANGES: FREQUENCIES.

ATS AIRSPACE CLASSIFICATION: REF ENR 1.4