

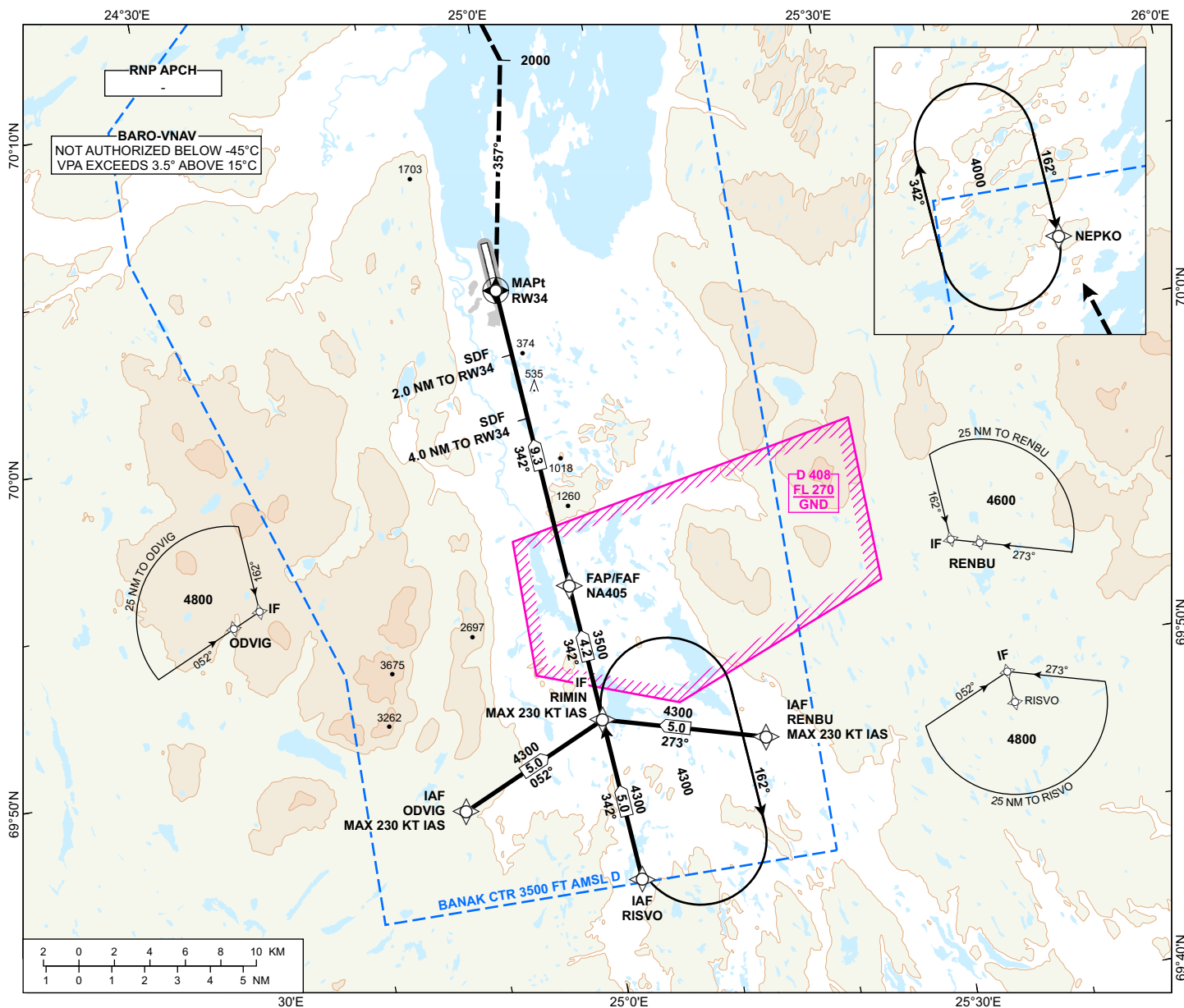
INSTRUMENT APPROACH CHART - ICAO

**LAKSELV
BANAK**

RNP Z RWY 34

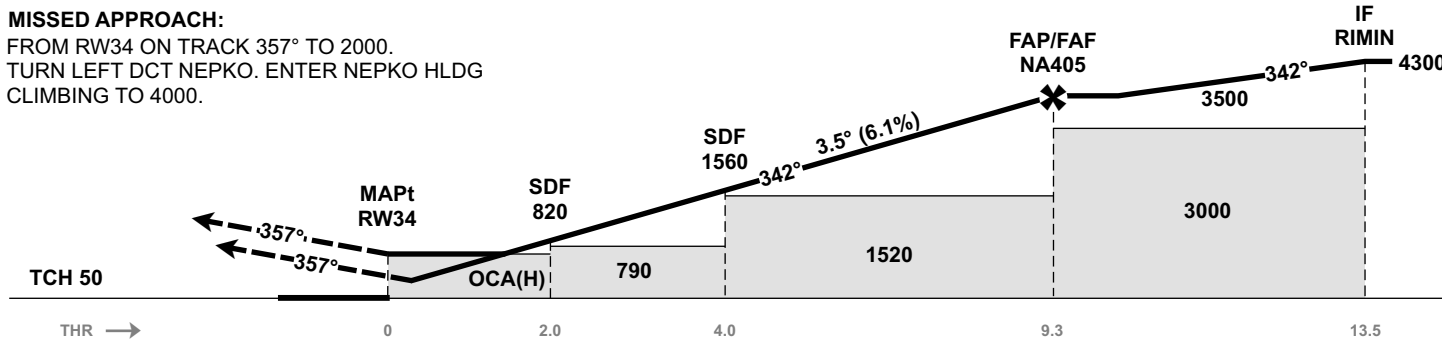
ATIS: 136.330	AD ELEV: 26
TWR: 118.905 257.800	THR ELEV: 25
	HGT RELATED TO THR 34
	CIRCLING HGT RELATED TO AD ELEV
	DIST IN NM. ELEV, ALT AND HGT IN FT
SCALE 1:350 000	VAR 13° E (2020)

TRANSITION ALTITUDE
7000



DIST TO RW34	9	8	7	6	5	4	3	2
ALT (HGT)	3490 (3465)	3100 (3075)	2720 (2695)	2340 (2315)	1960 (1935)	1580 (1555)	1200 (1175)	820 (795)

MISSED APPROACH:
FROM RW34 ON TRACK 357° TO 2000.
TURN LEFT DCT NEPKO. ENTER NEPKO HLDG
CLIMBING TO 4000.



CAT OF ACFT		A	B	C	D
OCA (H) STRAIGHT-IN	LNAV/VNAV	560 (535)	580 (555)	590 (565)	600 (575)
	LNAV	650 (625)		680 (655)	750 (725)
CIRCLING		670 (644)	980 (954)	1350 (1324)	2030 (2004)

NOTE: CIRCLING E OF AD ONLY.

CHANGES: FREQUENCIES.

ATS AIRSPACE CLASSIFICATION: REF ENR 1.4