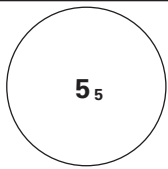
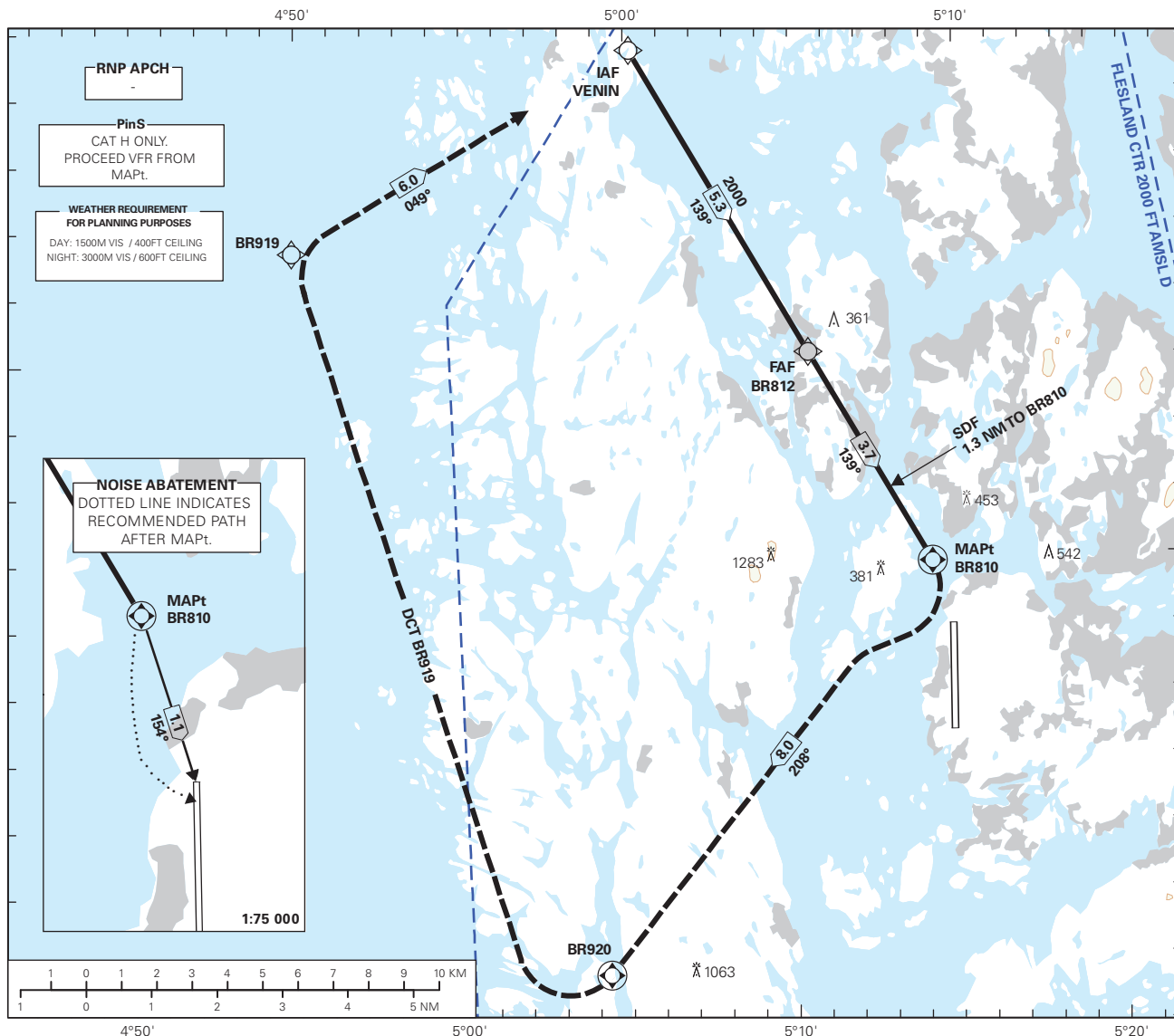


INSTRUMENT APPROACH CHART - ICAO PLAN VIEW SCALE: 1:200 000

**BERGEN
FLESLAND
RNP 139**

 <p>MSA 25 NM ARP</p>	ATIS: 125.255	AD ELEV: 171	
	APP: 121.005 118.855	THR ELEV: 166	DIST IN NM
	TWR: 119.105	HGT RELATED TO THR RWY 17	ELEV, ALT AND HGT IN FT
	SMC: 121.905	CIRCLING HGT RELATED TO AD ELEV	
	BEARINGS ARE MAGNETIC - VAR 1° E (2020)		

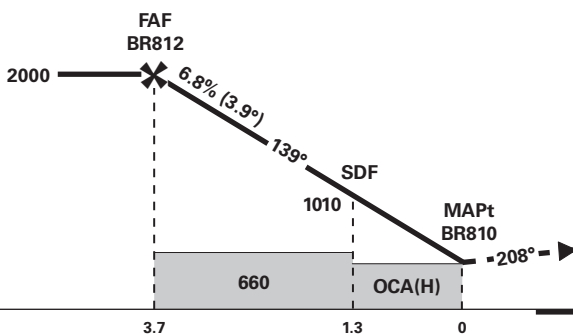
**TRANSITION ALTITUDE
7000**



DIST TO BR810	8	7	6	5	4	3	2	1
ALT (HGT)	-	-	-	-	-	1720 (1554)	1300 (1134)	890 (724)

MISSED APCH:
AT MAPt TURN RIGHT TO BR920 CLIMBING TO 2000. TURN RIGHT DCT BR919. TURN RIGHT TO VENIN. MAKE NEW APCH.

NOTE:
DESCENT GRADIENT CALCULATED FROM BR812 TO BR810.



CHANGES: FREQUENCIES.

CAT OF ACFT		H		
OCA(H)	LNAV 4.2%* 90 KT	470 (304)	-	-
	LNAV 4.2%* 120 KT**	500 (334)	-	-
CIRCLING		-	-	-

NOTE: VISUAL MANOEUVRING REQUIRED. *MNM MISSED APCH CLIMB GRADIENT. **FIXED WING PANS OPS CRITERIA USED FOR OCA(H) CALCULATIONS.