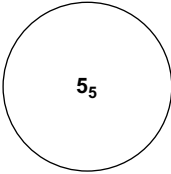
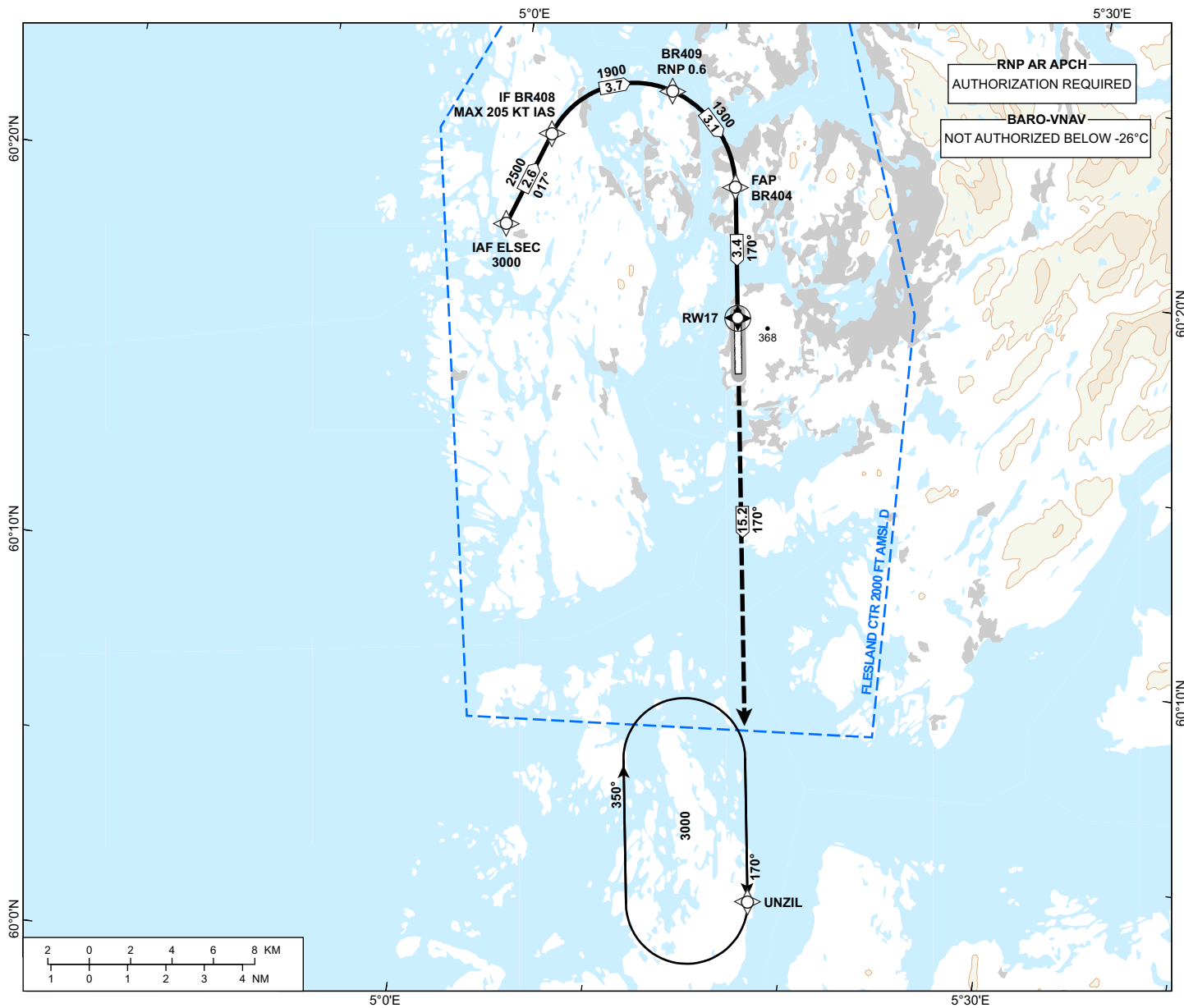


**INSTRUMENT APPROACH CHART - ICAO**

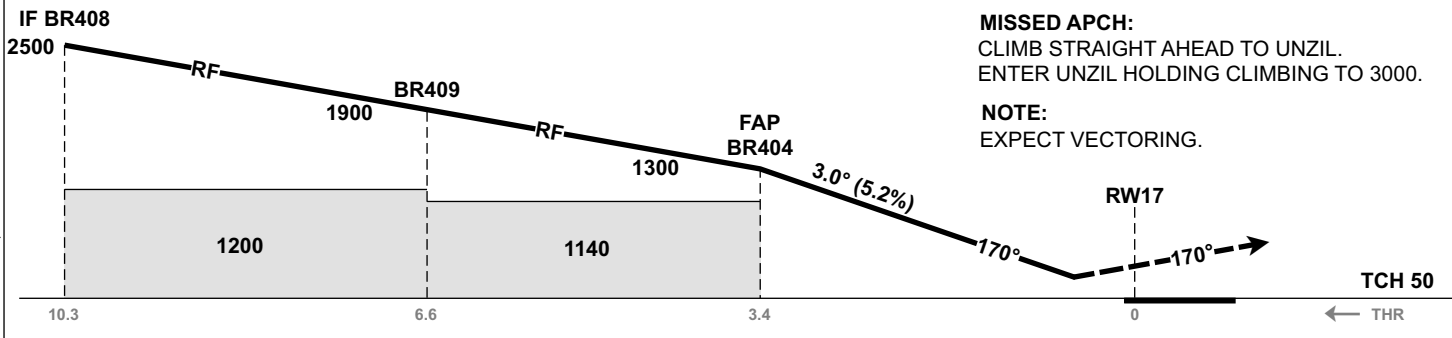
 MSA 25 NM ARP	ATIS: 125.255	AD ELEV: 171
	APP: 121.005 126.105	THR ELEV: 166
	118.855	HGT RELATED TO THR 17
	TWR: 119.105	CIRCLING HGT RELATED TO AD ELEV
	SMC: 121.905	DIST IN NM. ELEV, ALT AND HGT IN FT
SCALE 1:300 000		VAR 1° E (2020)

**BERGEN  
FLESLAND**  
**RNP W RWY 17 (AR)**  
TRANSITION ALTITUDE  
7000

ATS AIRSPACE CLASSIFICATION: REF ENR 1.4



DIST TO -	9	8	7	6	5	4	3	2
ALT (HGT)	-	-	-	-	-	-	-	-



CAT OF ACFT		A	B	C	D
OCA (H) STRAIGHT-IN	RNP 0.30	498 (332)	510 (344)	518 (352)	529 (363)
	-	-	-	-	-
CIRCLING		850 (679)		1680 (1509)	

NOTE: CAT D CIRCLING W OF AD ONLY.

CHANGES: FREQUENCIES, EDITORIALS