

INSTRUMENT APPROACH CHART - ICAO PLAN VIEW SCALE: 1:200 000

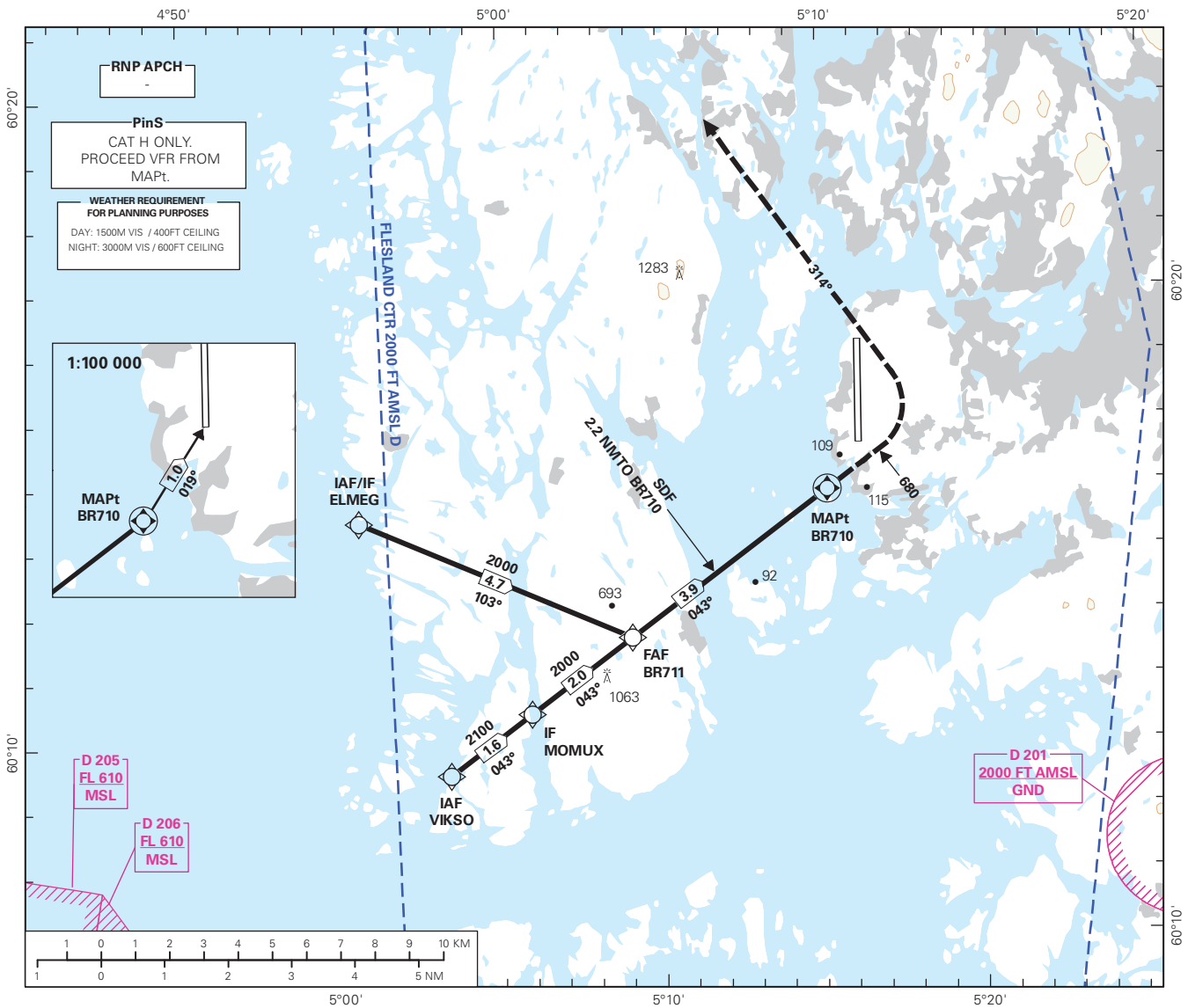
BERGEN

FLESLAND

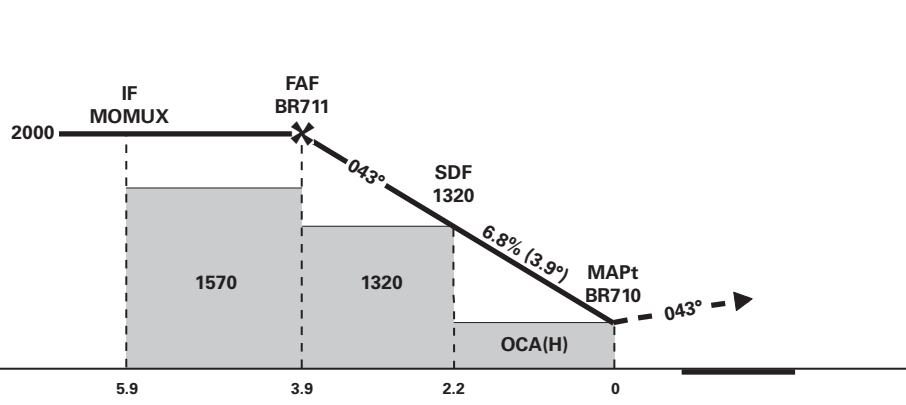
RNP 043

**TRANSITION ALTITUDE
7000**

<div style="border: 1px solid black; border-radius: 50%; width: 40px; height: 40px; margin: 0 auto; display: flex; align-items: center; justify-content: center;"> 5 </div> <p style="text-align: center; margin-top: 5px;">MSA 25 NM ARP</p>	ATIS: 125.255	AD ELEV: 171	
	APP: 121.005 118.855	THR ELEV: 146	DIST IN NM
	TWR: 119.105	HGT RELATED TO THR RWY 35	ELEV, ALT AND HGT IN FT
	SMC: 121.905	CIRCLING HGT RELATED TO AD ELEV	
	BEARINGS ARE MAGNETIC - VAR: 1° E (2020)		



DIST TO BR710	8	7	6	5	4	3	2	1
ALT (HGT)	-	-	-	-	-	1650 (1503)	1240 (1093)	830 (683)



MISSED APCH:
FROM BR710, CLIMB ON COURSE 043°. AT 680, TURN LEFT TO INTERCEPT AND PROCEED ON COURSE 314° TO BR715. CLIMB TO 2000. EXPECT VECTORING.

NOTE:
NO TURN BEFORE MAPt. DESCENT GRADIENT CALCULATED FROM BR711 TO BR710.

RCF:
FROM BR710, CLIMB ON COURSE 043°. AT 680, TURN LEFT TO INTERCEPT AND PROCEED ON COURSE 314° TO BR715. AT BR715 TURN LEFT DCT ELMEG FOR NEW APCH.

CHANGES: FREQUENCIES.

CAT OF ACFT		H			
OCA(H)	LNAV 4.2%* 90 KT	410 (263)	-	-	-
	LNAV 4.2%* 120 KT**	420 (273)	-	-	-
CIRCLING		-	-	-	-

NOTE: VISUAL MANOEUVRING REQUIRED. *MNM MISSED APCH CLIMB GRADIENT. **FIXED WING SEMI AREA WIDTH USED FOR OCA(H) CALCULATIONS.