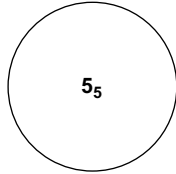
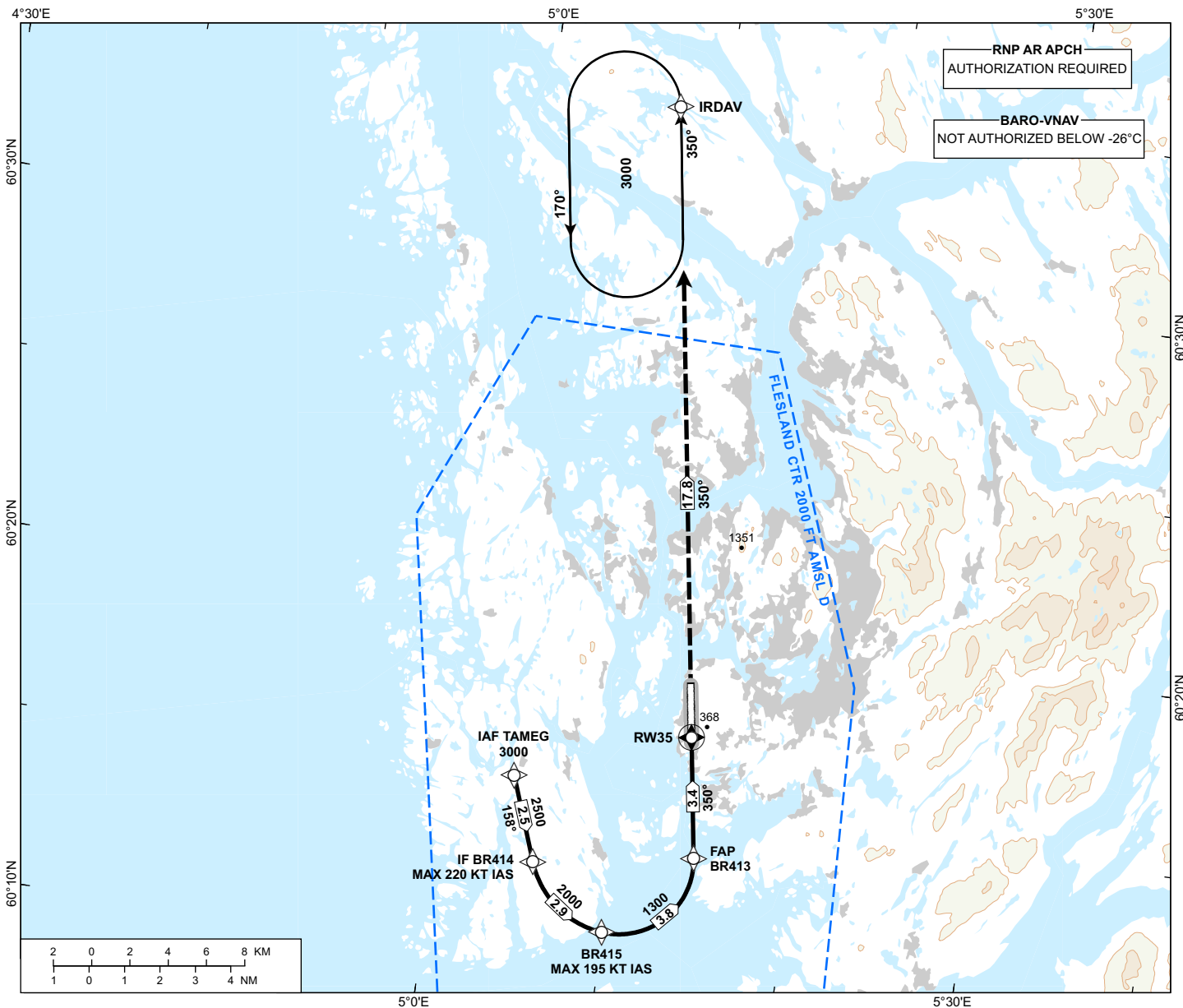


INSTRUMENT APPROACH CHART - ICAO

| | | |
|--|----------------------|-------------------------------------|
|  <p>MSA 25 NM ARP</p> | ATIS: 125.255 | AD ELEV: 171 |
| | APP: 121.005 126.105 | THR ELEV: 146 |
| | 118.855 | HGT RELATED TO THR 35 |
| | TWR: 119.105 | CIRCLING HGT RELATED TO AD ELEV |
| | SMC: 121.905 | DIST IN NM. ELEV, ALT AND HGT IN FT |
| SCALE 1:325 000 | | VAR 1° E (2020) |

**BERGEN
FLESLAND**
RNP W RWY 35 (AR)
TRANSITION ALTITUDE
7000

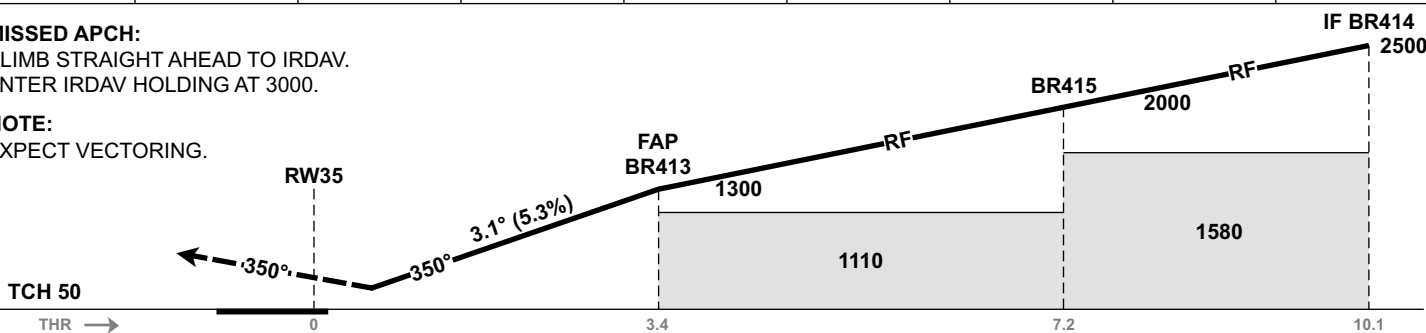
ATS AIRSPACE CLASSIFICATION: REF ENR 1.4



| | | | | | | | | |
|-----------|---|---|---|---|---|---|---|---|
| DIST TO - | 9 | 8 | 7 | 6 | 5 | 4 | 3 | 2 |
| ALT (HGT) | - | - | - | - | - | - | - | - |

MISSED APCH:
CLIMB STRAIGHT AHEAD TO IRDAV.
ENTER IRDAV HOLDING AT 3000.

NOTE:
EXPECT VECTORING.



| CAT OF ACFT | | A | B | C | D |
|------------------------|----------------|-----------|-----------|-------------|-----------|
| OCA (H) STRAIGHT-IN | RNP 0.30 2.5%* | 653 (507) | 665 (519) | 673 (527) | 684 (538) |
| | RNP 0.30 4.0%* | 498 (352) | 510 (364) | 518 (372) | 529 (383) |
| CIRCLING | | 850 (679) | | 1680 (1509) | |

NOTE: CAT D CIRCLING W OF AD ONLY. *MNM MISSED APCH CLIMB GRADIENT.

CHANGES: FREQUENCIES, EDITORIALS.