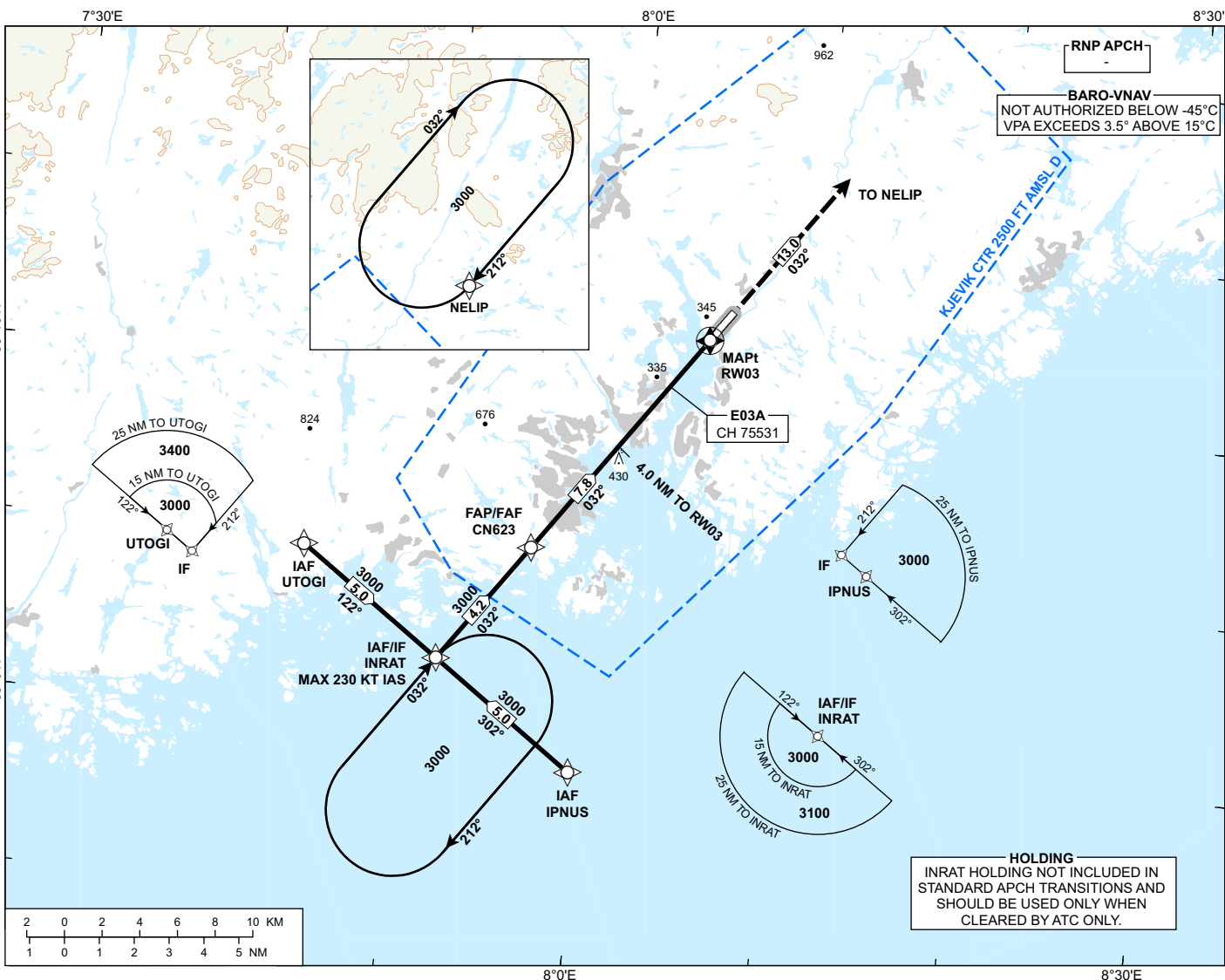


INSTRUMENT APPROACH CHART - ICAO

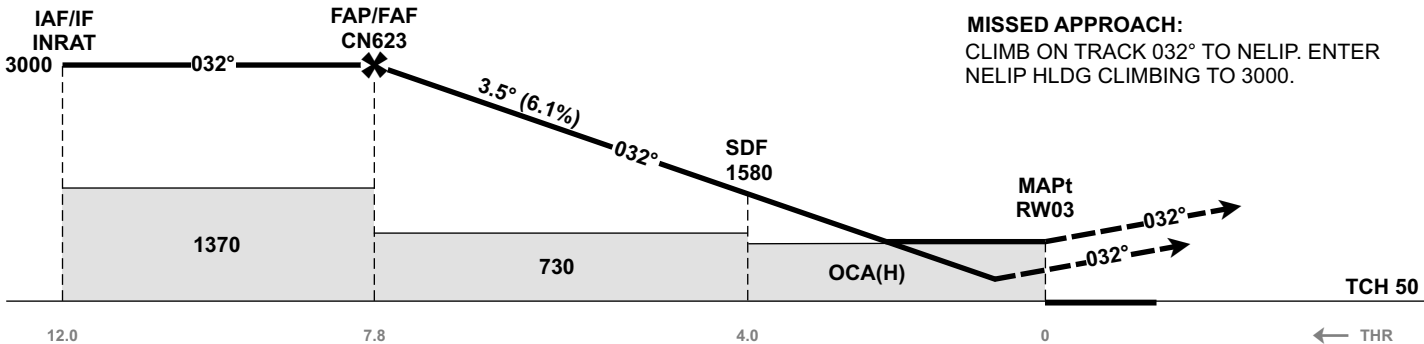
ATIS: 124.480	AD ELEV: 57
APP: 119.955	THR ELEV: 40
TWR: 119.955 118.105	HGT RELATED TO THR 03
	CIRCLING HGT RELATED TO AD ELEV
	DIST IN NM. ELEV, ALT AND HGT IN FT
SCALE 1:350 000	VAR 3° E (2020)

**KRISTIANSAND
KJEVIK
RNP Z RWY 03**

TRANSITION ALTITUDE
7000



DIST TO RW03	9	8	7	6	5	4	3	2
ALT (HGT)	-	-	2700 (2660)	2330 (2290)	1950 (1910)	1580 (1540)	1210 (1170)	840 (800)



CAT OF ACFT		A	B	C	D
OCA (H) STRAIGHT- IN	LPV 2.5%*	282 (242)	294 (254)	317 (277)	339 (299)
	LPV 3.5%*	228 (188)	240 (200)	262 (222)	282 (242)
	LPV 5.0%*	200 (160)	209 (169)	224 (184)	238 (198)
	LNAV/VNAV	520 (480)	540 (500)	550 (510)	570 (530)
	LNAV	650 (610)	680 (640)	700 (660)	720 (680)
CIRCLING		860 (803)	1020 (963)	1110 (1053)	

NOTE: CIRCLING E OF AD ONLY. *MNM MISSED APCH CLIMB GRADIENT.

CHANGES: PROCEDURE NAME, FREQUENCIES, EDITORIALS.

ATS AIRSPACE CLASSIFICATION: REF ENR 1.4