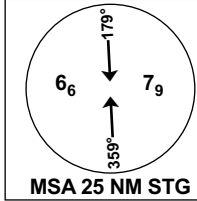


**INSTRUMENT APPROACH CHART - ICAO**

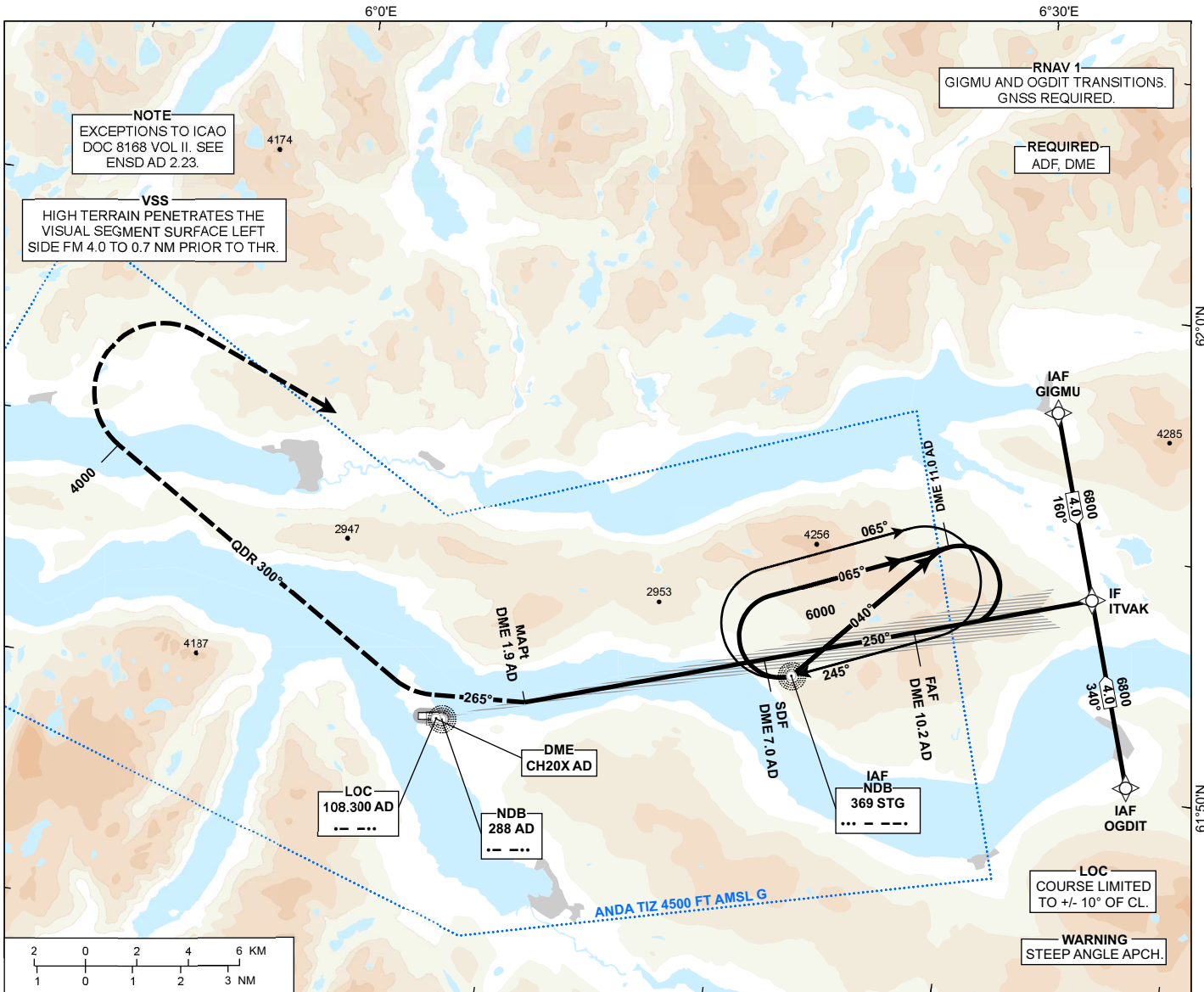
**SANDANE  
ANDA**

**LOC RWY 26**



AFIS: 119.805	AD ELEV: 196
VDF: 119.805	THR ELEV: 180
	HGT RELATED TO THR 26
	CIRCLING HGT RELATED TO AD ELEV
	DIST IN NM. ELEV, ALT AND HGT IN FT
SCALE 1:250 000	VAR 2° E (2020)

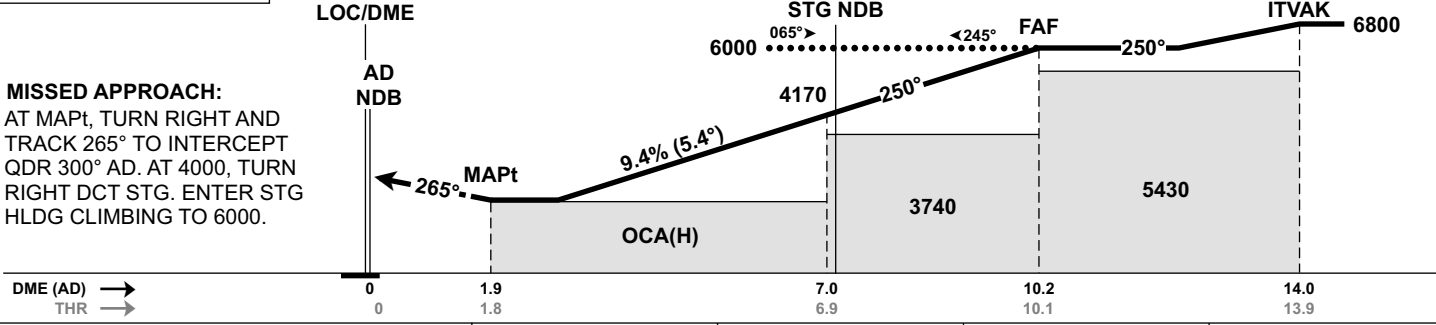
TRANSITION ALTITUDE  
7000



DIST TO AD	12	11	10	9	8	7	6	5
ALT (HGT)	-	-	5890 (5710)	5310 (5130)	4740 (4560)	4170 (3990)	3590 (3410)	3020 (2840)

PROCEDURE OFFSET: 12°

**MISSED APPROACH:**  
AT MAPt, TURN RIGHT AND TRACK 265° TO INTERCEPT QDR 300° AD. AT 4000, TURN RIGHT DCT STG. ENTER STG HLDG CLIMBING TO 6000.



CAT OF ACFT		A	B	C	D
OCA (H) STRAIGHT- IN	LOC 2.5%*	2520 (2340)	-	-	-
	LOC 4.0%*	2170 (1990)	-	-	-
	LOC 5.0%*	2090 (1910)	-	-	-
CIRCLING		2520 (2324)	3600 (3404)	-	-

NOTE: CIRCLING N OF AD ONLY. \*MNM MISSED APCH CLIMB GRADIENT.

ATS AIRSPACE CLASSIFICATION: REF ENR 1.4

CHANGES: FREQUENCIES.