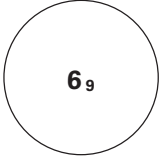
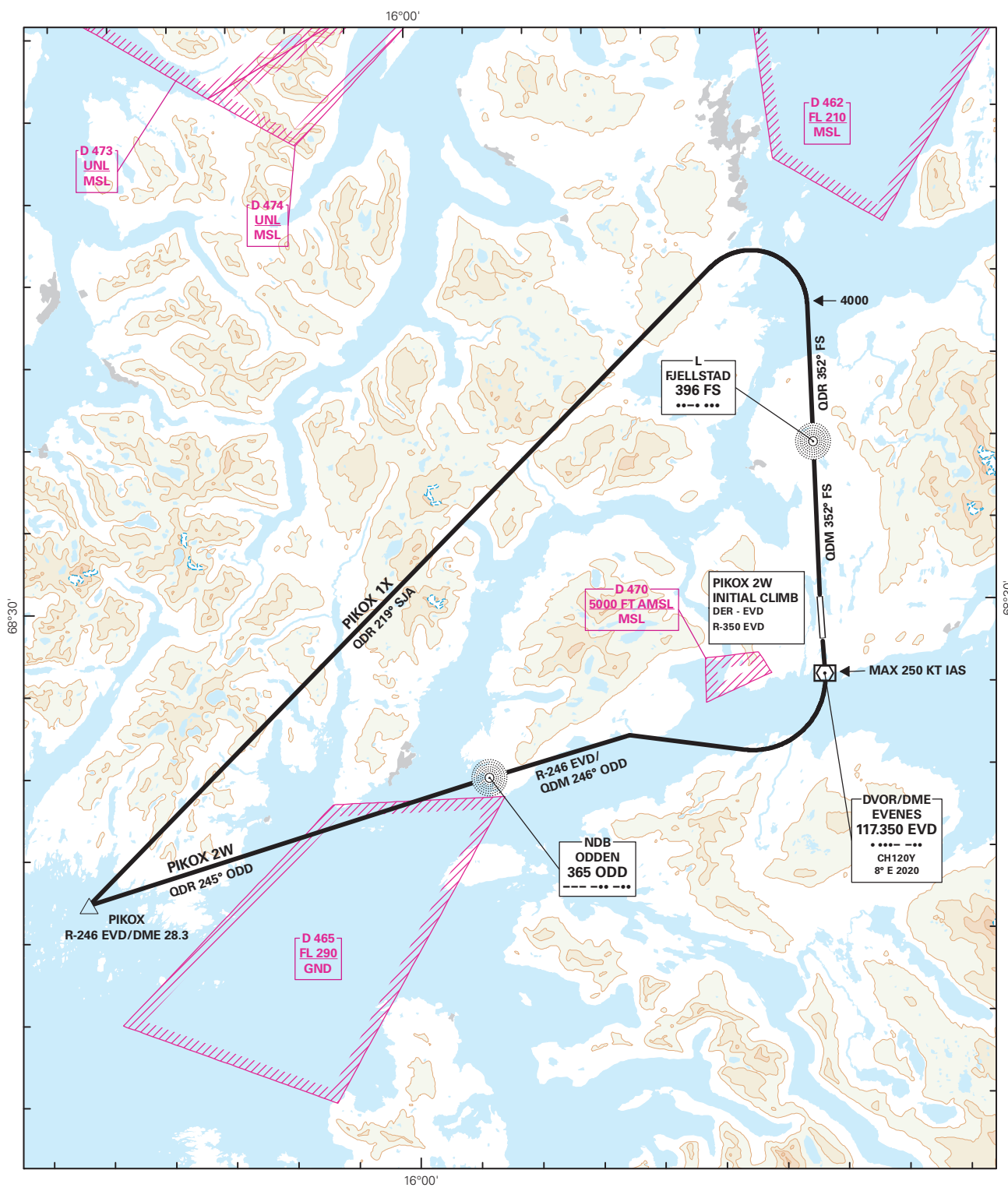


STANDARD DEPARTURE CHART INSTRUMENT - ICAO

 <p>MSA 25 NM ARP</p>	ATIS: 126.030 APP: 120.105 TWR: 120.105 118.005	ALT AND ELEV ARE IN FT DIST IN NM			HARSTAD/NARVIK EVENES RWY 17/35 NORWAY PIKOX 1X, PIKOX 2W
	1:400 000 VAR: 8° E (2020) TA 7000				



CHANGES: FREQUENCIES.

SID DESCRIPTION OVERLEAF
DESCRIPTION OF WAYPOINTS, REF ENR 4.4

ATS AIRSPACE CLASSIFICATIONS: REF ENR 1.4
LEGEND: REF GEN 2.3

