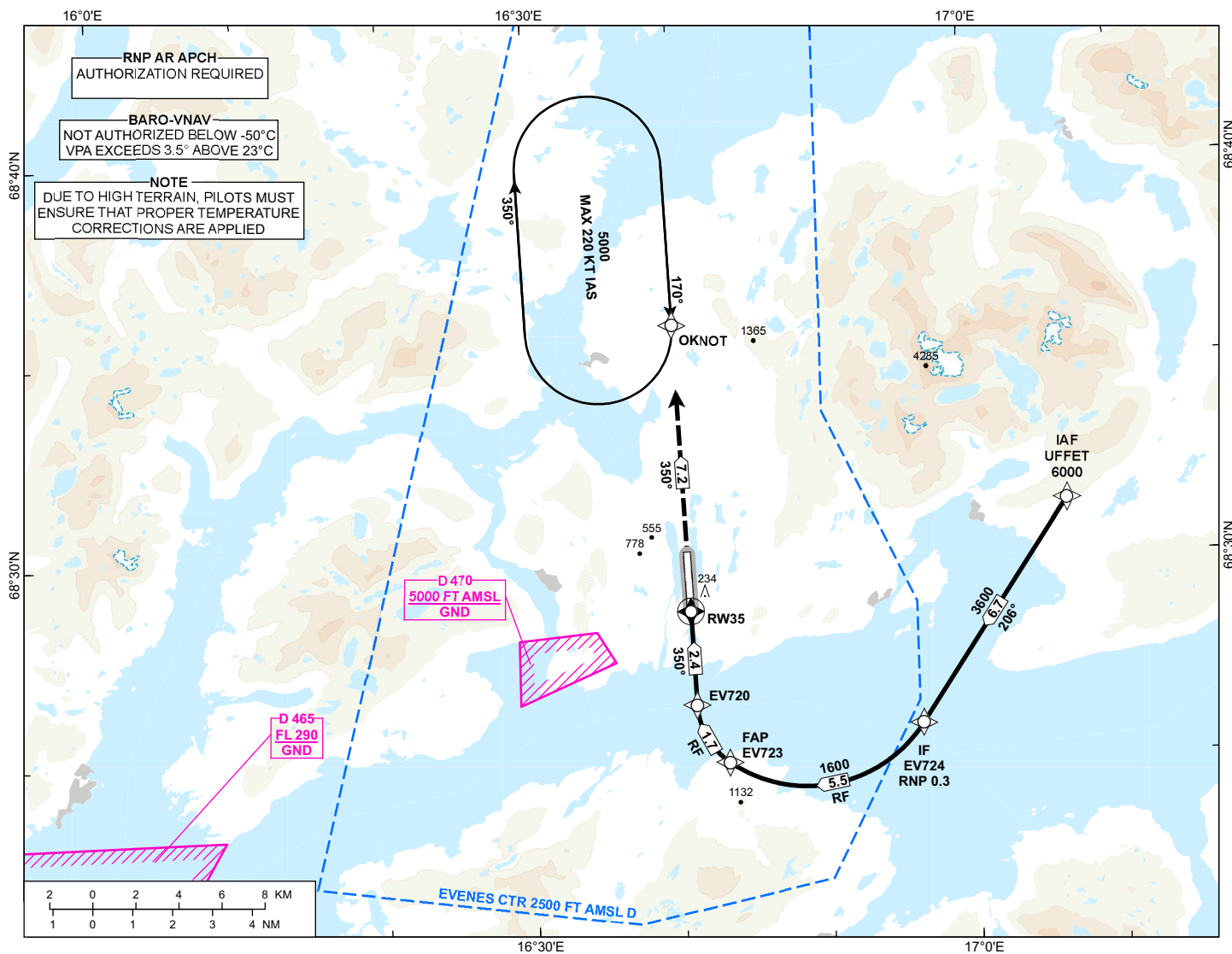


INSTRUMENT APPROACH CHART - ICAO

**HARSTAD/NARVIK
EVENES
RNP E RWY 35 (AR)**
TRANSITION ALTITUDE
7000

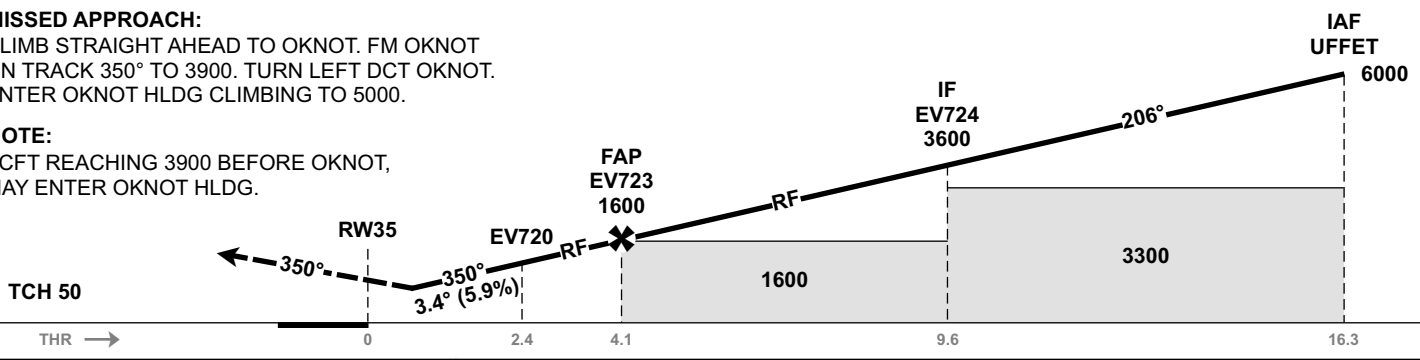
| | | |
|----------------------|----------------------|-------------------------------------|
| <p>MSA 25 NM ARP</p> | ATIS: 126.030 | AD ELEV: 85 |
| | APP: 120.105 | THR ELEV: 81 |
| | TWR: 118.005 120.105 | HGT RELATED TO THR 35 |
| | | CIRCLING HGT RELATED TO AD ELEV |
| | | DIST IN NM. ELEV, ALT AND HGT IN FT |
| | SCALE 1:300 000 | VAR 8° E (2020) |



| | | | | | | | | |
|--------------|---|---|---|---|---|---|---|---|
| DIST TO RW35 | 9 | 8 | 7 | 6 | 5 | 4 | 3 | 2 |
| ALT (HGT) | - | - | - | - | - | - | - | - |

MISSED APPROACH:
CLIMB STRAIGHT AHEAD TO OKNOT. FM OKNOT ON TRACK 350° TO 3900. TURN LEFT DCT OKNOT. ENTER OKNOT HLDG CLIMBING TO 5000.

NOTE:
ACFT REACHING 3900 BEFORE OKNOT, MAY ENTER OKNOT HLDG.



| CAT OF ACFT | | A | B | C | D |
|-------------------------|-----------------|-------------|-------------|-------------|-------------|
| OCA (H) STRAIGHT- IN | RNP 0.3 (2.5%*) | 628 (547) | 650 (569) | 672 (591) | 691 (610) |
| | RNP 0.3 (4.0%*) | 530 (449) | 555 (474) | 581 (500) | 603 (522) |
| | RNP 0.3 (5.0%*) | 479 (398) | 506 (425) | 534 (453) | 557 (476) |
| | RNP 0.1 (2.5%*) | 488 (407) | 510 (429) | 531 (450) | 551 (470) |
| | RNP 0.1 (4.0%*) | 315 (234) | 340 (259) | 366 (285) | 383 (302) |
| CIRCLING | | 1130 (1045) | 1690 (1605) | 2090 (2005) | 2140 (2055) |

NOTE: CIRCLING W OF AD ONLY. *MNM MISSED APCH CLIMB GRADIENT.

CHANGES: FREQUENCIES, EDITORIALS.

ATS AIRSPACE CLASSIFICATION: REF ENR 1.4