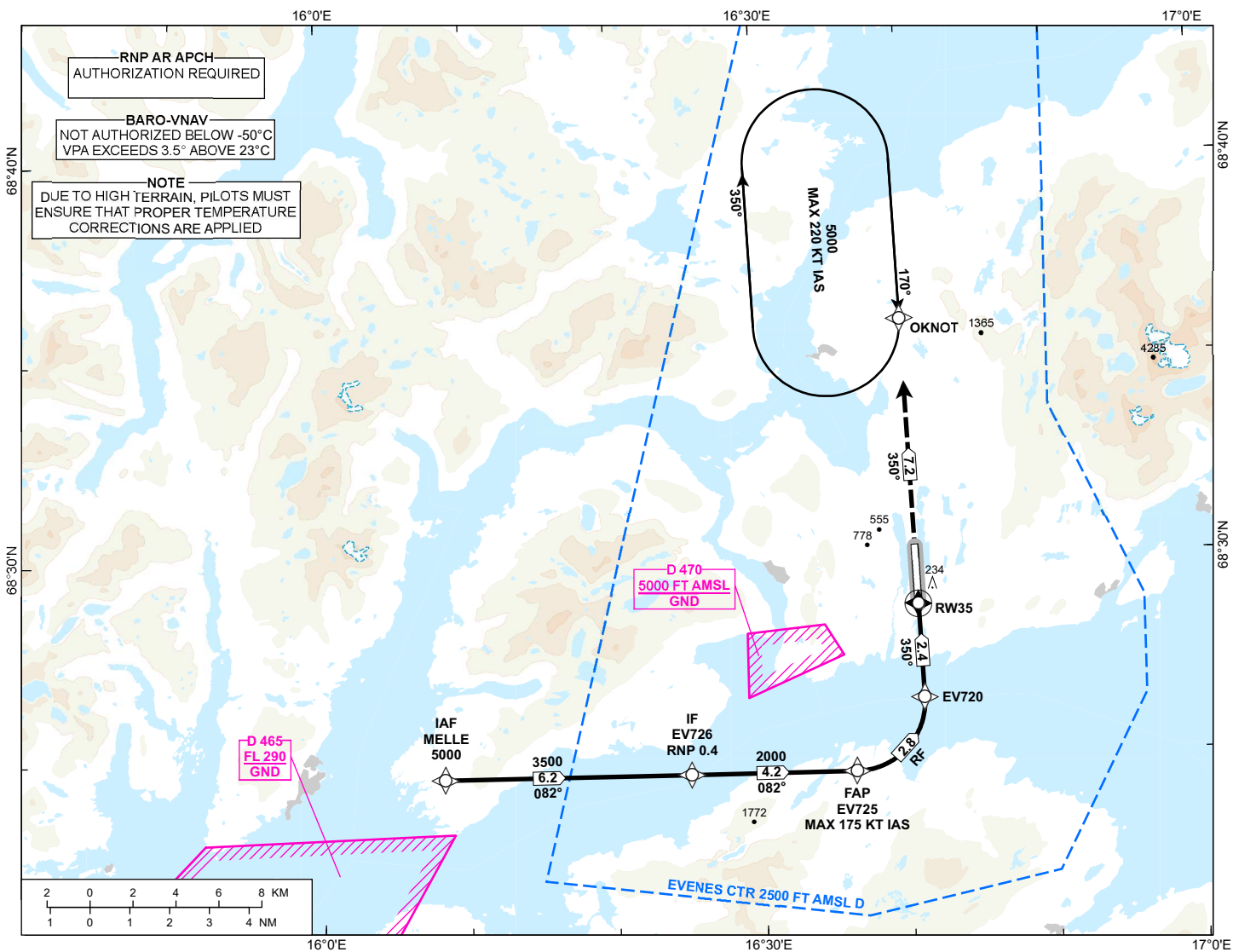


INSTRUMENT APPROACH CHART - ICAO

**HARSTAD/NARVIK
EVENES
RNP W RWY 35 (AR)**
TRANSITION ALTITUDE
7000

<p>MSA 25 NM ARP</p>	ATIS: 126.030	AD ELEV: 85
	APP: 120.105	THR ELEV: 81
	TWR: 118.005 120.105	HGT RELATED TO THR 35
		CIRCLING HGT RELATED TO AD ELEV
		DIST IN NM. ELEV, ALT AND HGT IN FT
	SCALE 1:300 000	VAR 8° E (2020)



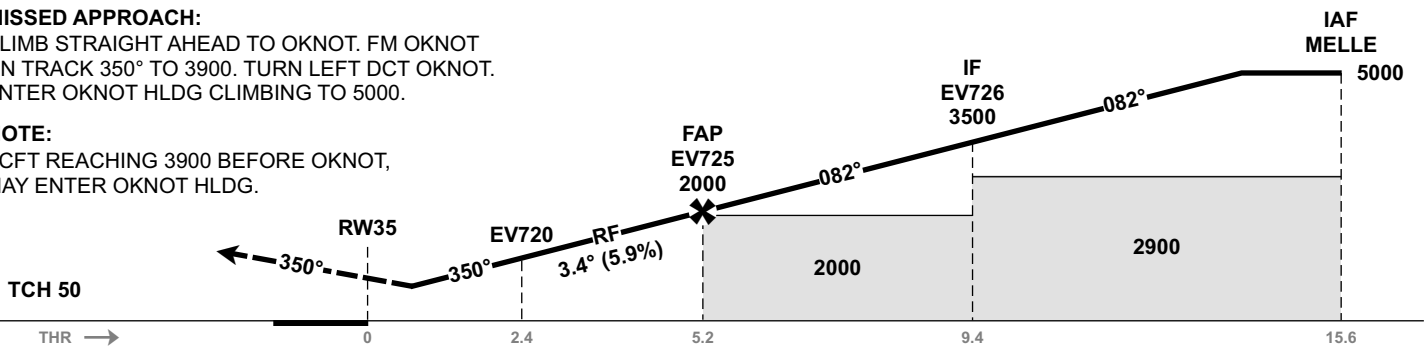
DIST TO RW35	9	8	7	6	5	4	3	2
ALT (HGT)	-	-	-	-	-	-	-	-

MISSED APPROACH:

CLIMB STRAIGHT AHEAD TO OKNOT. FM OKNOT ON TRACK 350° TO 3900. TURN LEFT DCT OKNOT. ENTER OKNOT HLDG CLIMBING TO 5000.

NOTE:

ACFT REACHING 3900 BEFORE OKNOT, MAY ENTER OKNOT HLDG.



CAT OF ACFT		A	B	C	D
OCA (H) STRAIGHT- IN	RNP 0.3 (2.5%*)	628 (547)	650 (569)	672 (591)	691 (610)
	RNP 0.3 (4.0%*)	530 (449)	555 (474)	581 (500)	603 (522)
	RNP 0.3 (5.0%*)	479 (398)	506 (425)	534 (453)	557 (476)
	RNP 0.1 (2.5%*)	488 (407)	510 (429)	531 (450)	551 (470)
	RNP 0.1 (4.0%*)	315 (234)	340 (259)	366 (285)	383 (302)
CIRCLING		1130 (1045)	1690 (1605)	2090 (2005)	2140 (2055)

NOTE: CIRCLING W OF AD ONLY. *MNM MISSED APCH CLIMB GRADIENT.

CHANGES: FREQUENCIES, EDITORIALS.

ATS AIRSPACE CLASSIFICATION: REF ENR 1.4