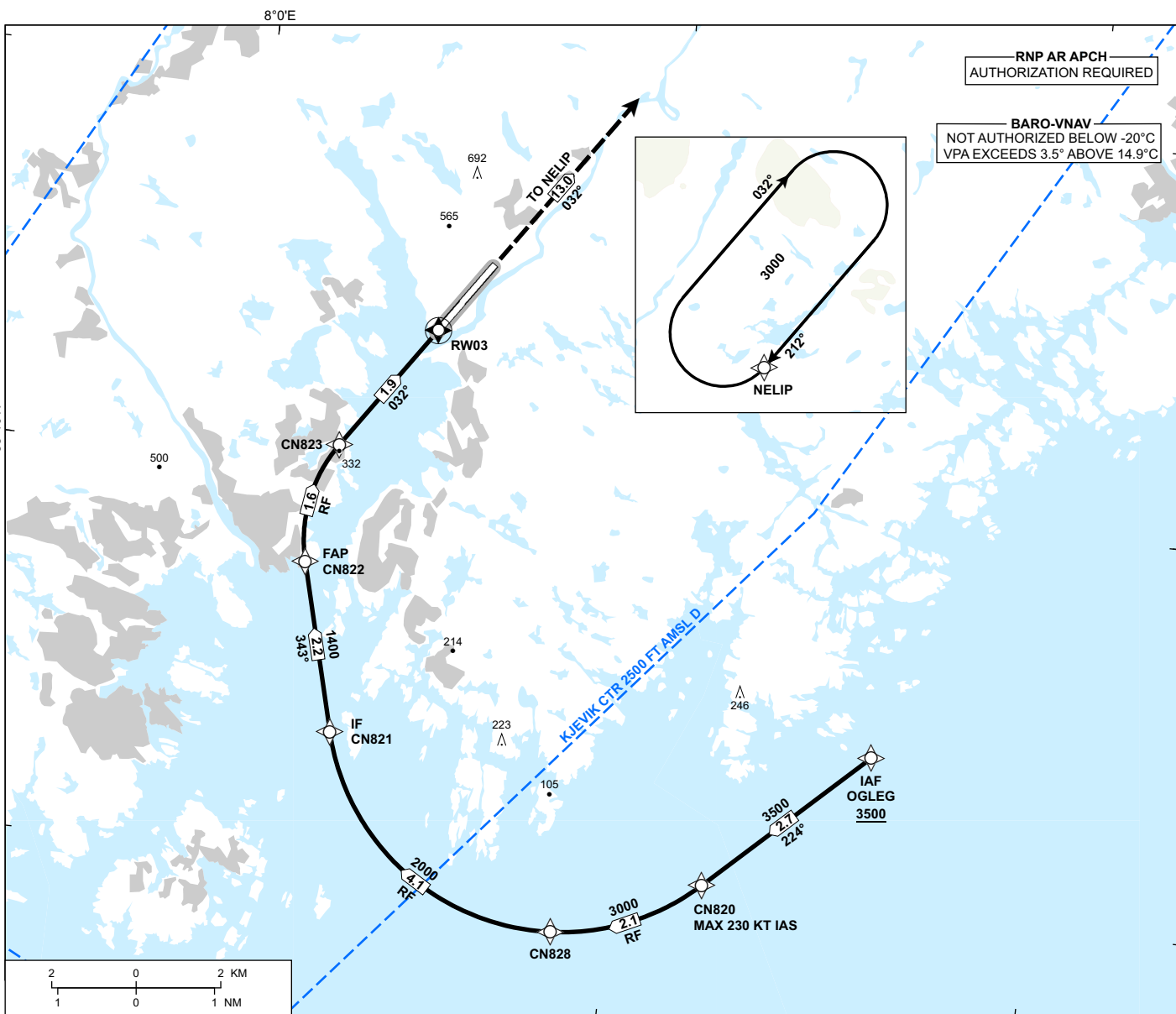


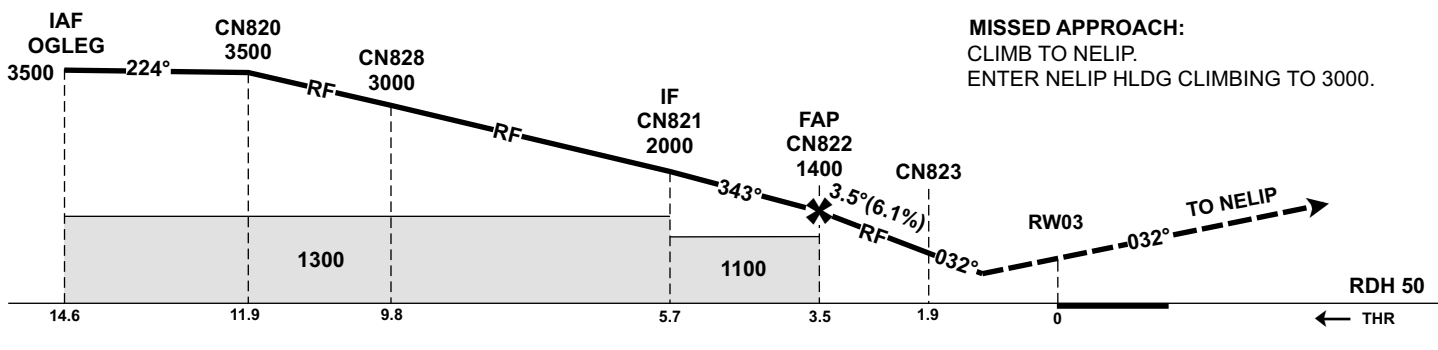
**INSTRUMENT APPROACH CHART - ICAO**

**KRISTIANSAND  
KJEVIK  
RNP E RWY 03 (AR)**  
TRANSITION ALTITUDE  
7000

<p>MSA 25 NM ARP</p>	ATIS: 124.480	AD ELEV: 57
	APP: 119.955	THR ELEV: 40
	TWR: 119.955 118.105	HGT RELATED TO THR 03
		CIRCLING HGT RELATED TO AD ELEV
		DIST IN NM. ELEV, ALT AND HGT IN FT
	SCALE 1:150 000	VAR 3° E (2020)



DIST TO RW03	9	8	7	6	5	4	3	2
ALT (HGT)	-	-	-	-	-	-	-	-



**MISSED APPROACH:**  
CLIMB TO NELIP.  
ENTER NELIP HLDG CLIMBING TO 3000.

CAT OF ACFT		A	B	C	D
OCA (H) STRAIGHT-IN	RNP 0.3 2.5%*	553 (513)	576 (536)	598 (558)	618 (578)
	RNP 0.3 3.5%*	536 (496)	548 (508)	560 (520)	575 (535)
CIRCLING		-	-	-	-

NOTE: \*MNM MISSED APCH CLIMB GRADIENT.

ATS AIRSPACE CLASSIFICATION: REF ENR 1.4

CHANGES: FREQUENCIES, EDITORIALS.