

**INSTRUMENT APPROACH CHART - ICAO PLAN VIEW SCALE: 1:350 000**

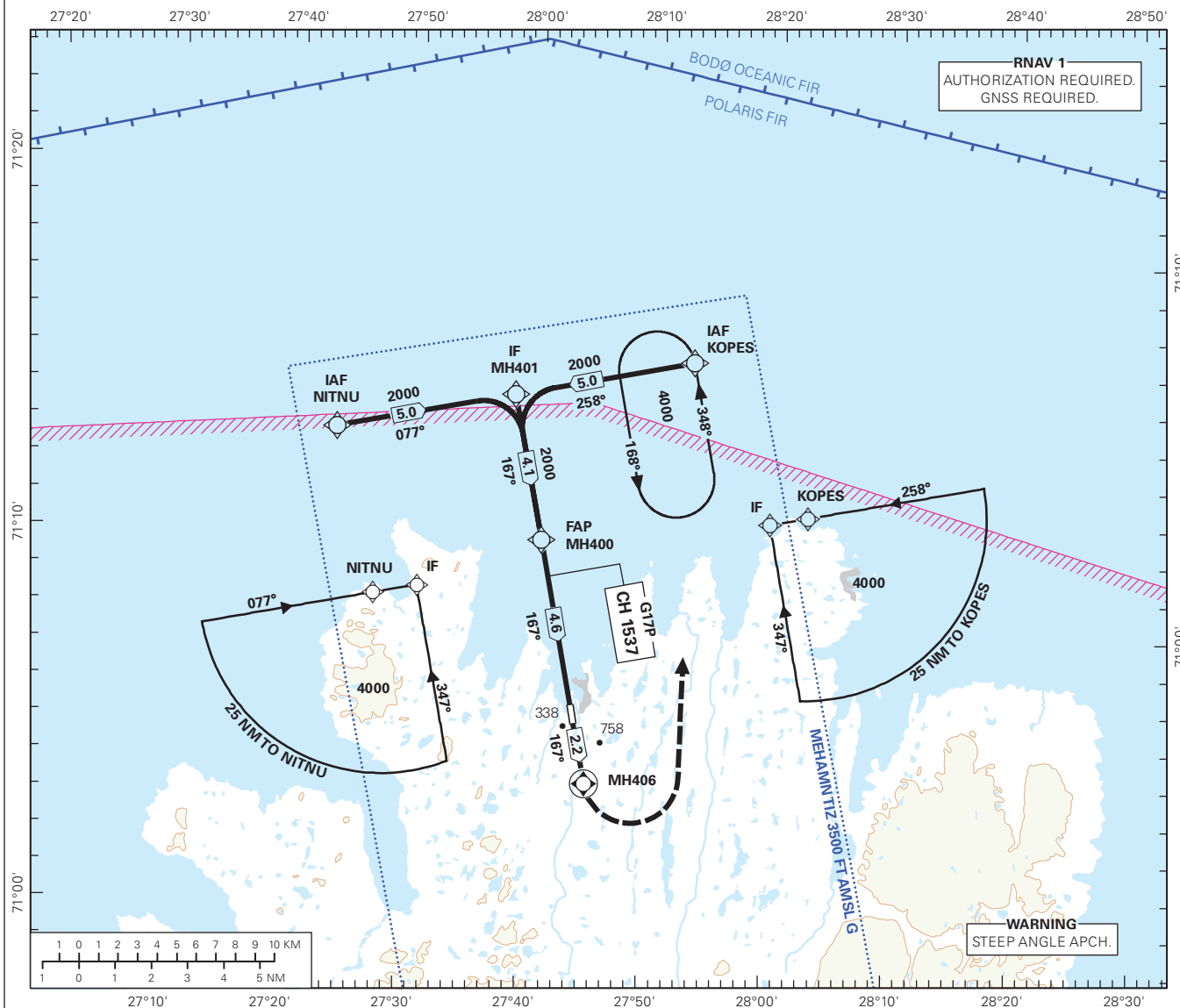
MEHAMN

**MEHAMN**

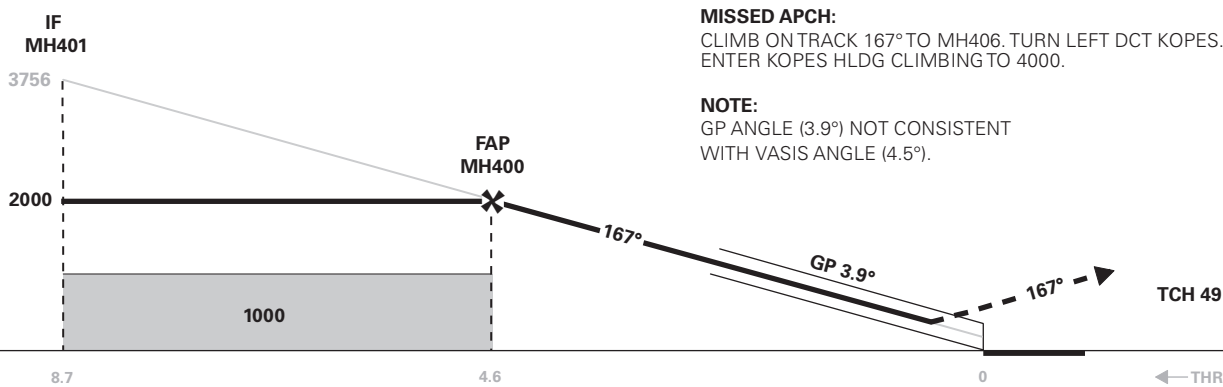
**GLS RWY 17**

**TRANSITION ALTITUDE  
7000**

ATIS: 132.155	AD ELEV: 43	
AFIS: 121.205	THR ELEV: 32	DIST IN NM
	HGT RELATED TO THR RWY 17	ELEV, ALT AND HGT IN FT
CIRCLING HGT RELATED TO AD ELEV		
BEARINGS ARE MAGNETIC - VAR 15 ° E (2020)		



DIST TO THR	9	8	7	6	5	4	3	2
ALT (HGT)	-	-	-	-	-	1752 (1720)	1332 (1300)	913 (881)



**MISSED APCH:**

CLIMB ON TRACK 167° TO MH406. TURN LEFT DCT KOPES. ENTER KOPES HLDG CLIMBING TO 4000.

**NOTE:**

GP ANGLE (3.9°) NOT CONSISTENT WITH VASIS ANGLE (4.5°).

CAT OF ACFT		A	B	C	D
OCA(H) SCAT-I	2.5%*	771 (739)	786 (754)	-	-
	3.0%*	724 (692)	740 (708)	-	-
	4.0%*	643 (611)	659 (627)	-	-
CIRCLING	5.0%*	576 (544)	592 (560)	-	-
		1110 (1067)	1250 (1207)	-	-

NOTE: \*MNM MISSED APCH CLIMB GRADIENT.