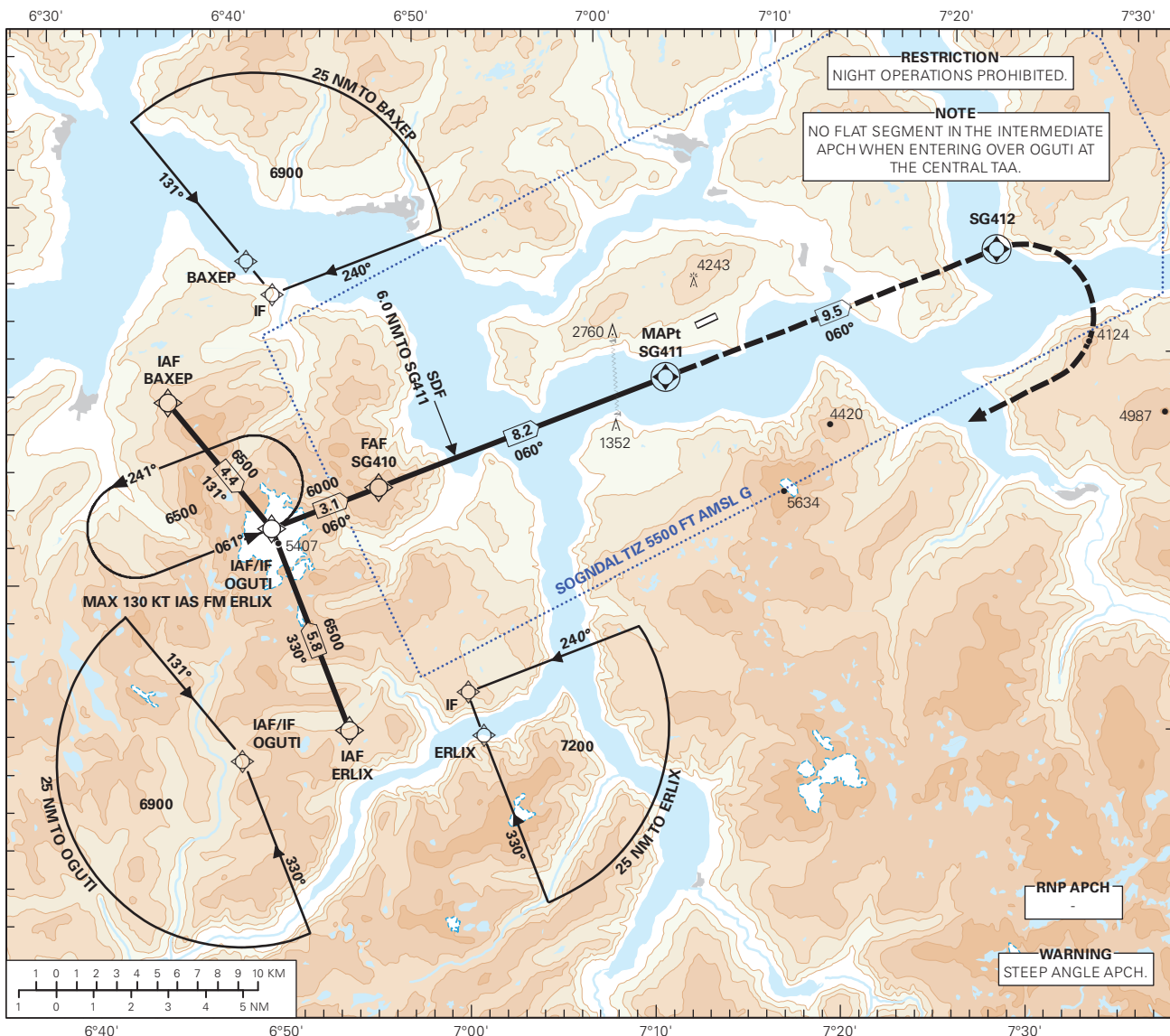
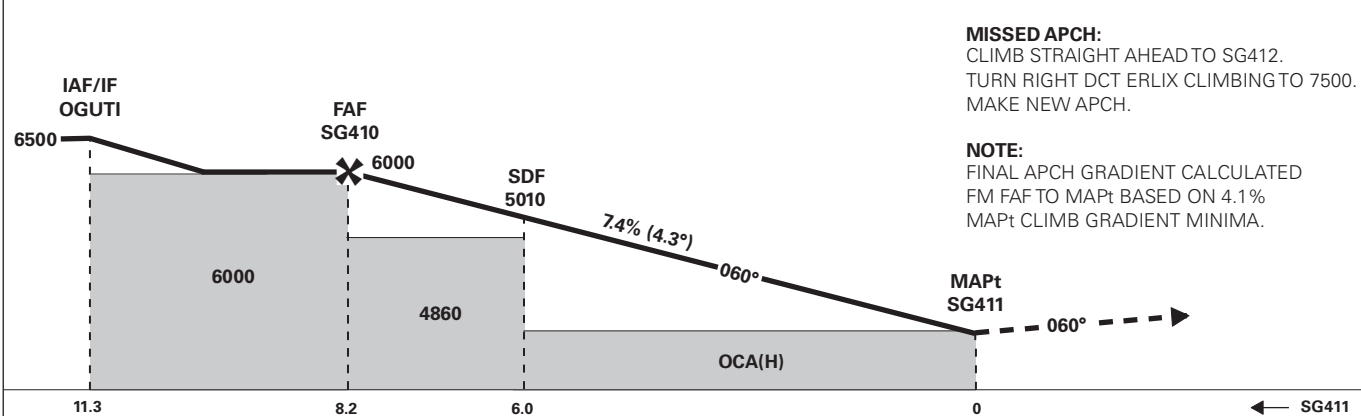


**INSTRUMENT APPROACH CHART - ICAO PLAN VIEW SCALE: 1:350 000**

ATIS: 131.255 AFIS: 119.305	AD ELEV: 1633	DIST IN NM ELEV, ALT AND HGT IN FT	<b>SOGNDAL HAUKÅSEN RNP-A</b>
	CIRCLING HGT RELATED TO AD ELEV		
BEARINGS ARE MAGNETIC - VAR 2° E (2020)			



DIST TO SG411	8	7	6	5	4	3	2	1
ALT (HGT)	5910 (4277)	5460 (3827)	5010 (3377)	4550 (2917)	4100 (2467)	3650 (2017)	3200 (1567)	2750 (1117)



**MISSED APCH:**  
CLIMB STRAIGHT AHEAD TO SG412.  
TURN RIGHT DCT ERLIX CLIMBING TO 7500.  
MAKE NEW APCH.

**NOTE:**  
FINAL APCH GRADIENT CALCULATED  
FM FAF TO MAPt BASED ON 4.1%  
MAPt CLIMB GRADIENT MINIMA.

CHANGES: FREQUENCIES.

		A	B	C	D
CAT OF ACFT					
OCA(H) STRAIGHT - IN		-	-	-	-
CIRCLING**	LNAV 2.5%*	3600 (1967)		-	-
	LNAV 4.1%*	2290 (657)		-	-

NOTE: \*\*CIRCLING S OF AD ONLY. \*MNM MISSED APCH CLIMB GRADIENT