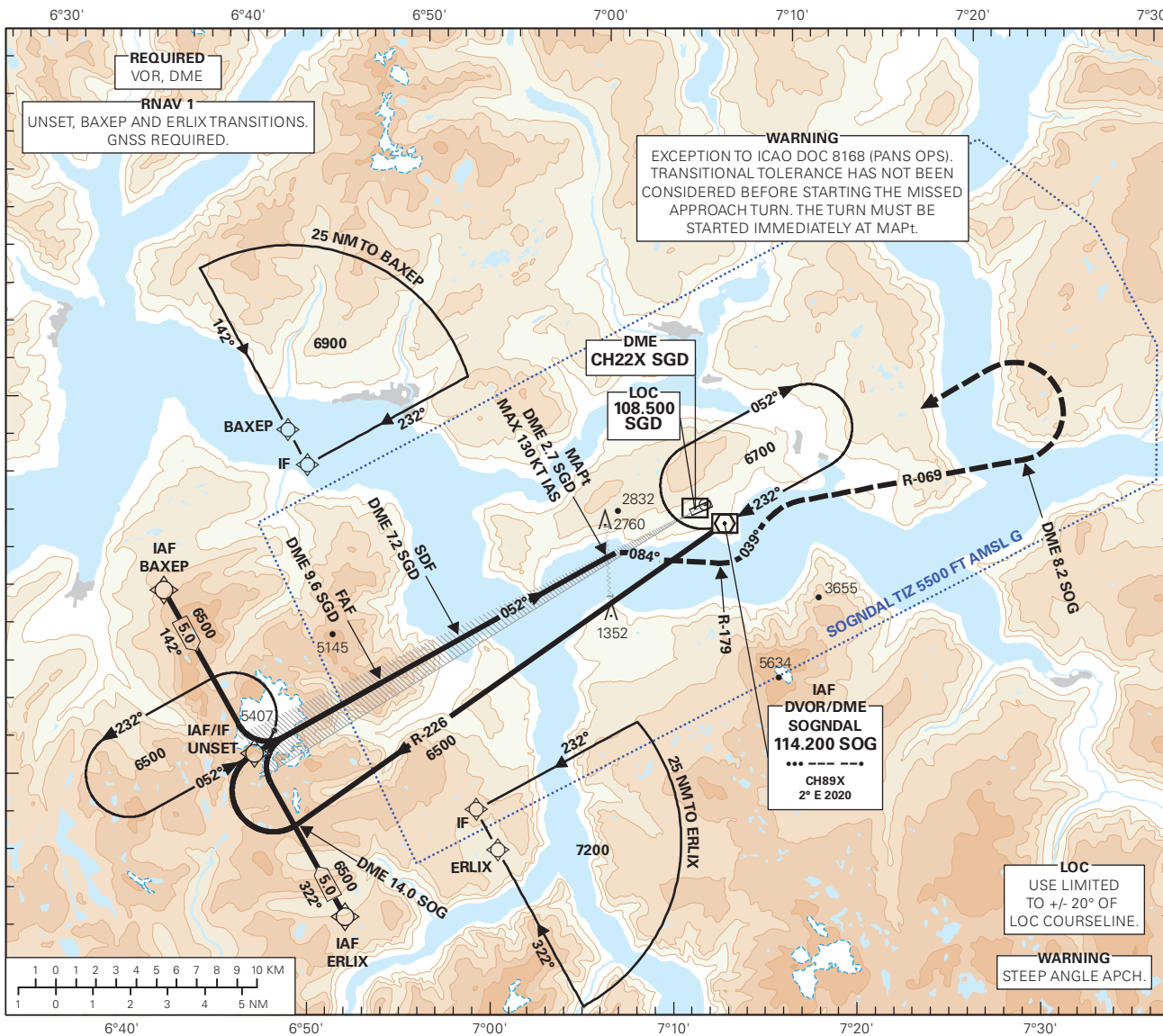
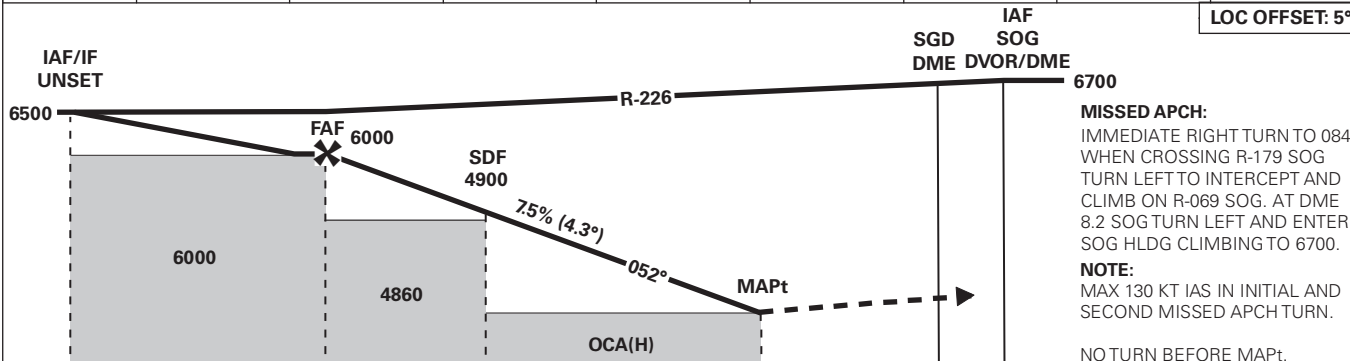


INSTRUMENT APPROACH CHART - ICAO PLAN VIEW SCALE: 1:350 000

<p>MSA 25 NM SOG</p>	ATIS: 131.255	AD ELEV: 1633	SOGNDAL HAUKÅSEN LOC RWY 06 TRANSITION ALTITUDE 7000	
	AFIS: 119.305	THR ELEV: 1616		
		HGT RELATED TO THR RWY 06	ELEV, ALT AND HGT IN FT	
		CIRCLING HGT RELATED TO AD ELEV		
BEARINGS ARE MAGNETIC - VAR 2° E (2020)				



DIST TO SGD	10	9	8	7	6	5	4	3
ALT (HGT)	-	5370 (4114)	5270 (3654)	4810 (3194)	4360 (2744)	3900 (2284)	3440 (1824)	2990 (1374)



		LOC OFFSET: 5°									
IAF/IF UNSET		IAF SGD DME DVOR/DME									
6500		6700									
6000		MISSED APCH:									
4860		IMMEDIATE RIGHT TURN TO 084° WHEN CROSSING R-179 SOG TURN LEFT TO INTERCEPT AND CLIMB ON R-069 SOG. AT DME 8.2 SOG TURN LEFT AND ENTER SOG HLDG CLIMBING TO 6700.									
OCA(H)		NOTE:									
		MAX 130 KT IAS IN INITIAL AND SECOND MISSED APCH TURN.									
		NO TURN BEFORE MAPt.									
		← SGD									
		← THR									
		← SOG									
CAT OF ACFT	A	B	C	D	FINAL APCH	DIST FAF - MAPt: 6.9					
OCA(H) STRAIGHT - IN	LOC 2.5%*	3090 (1474)	-	-	SPEED	KT	70	90	100	120	130
	LOC 3.3%*	2890 (1274)	2890 (1274)	-	TIME	MIN:SEC	05:56	04:37	04:09	03:28	03:12
CIRCLING	3090 (1457)				ROD	FT/MIN	535	690	765	915	990

NOTE: CIRCLING S OF AD ONLY. *MNM MISSED APCH CLIMB GRADIENT.

CHANGES: FREQUENCIES.