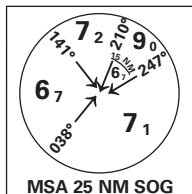


INSTRUMENT APPROACH CHART - ICAO PLAN VIEW SCALE: 1:350 000

SOGNDAL

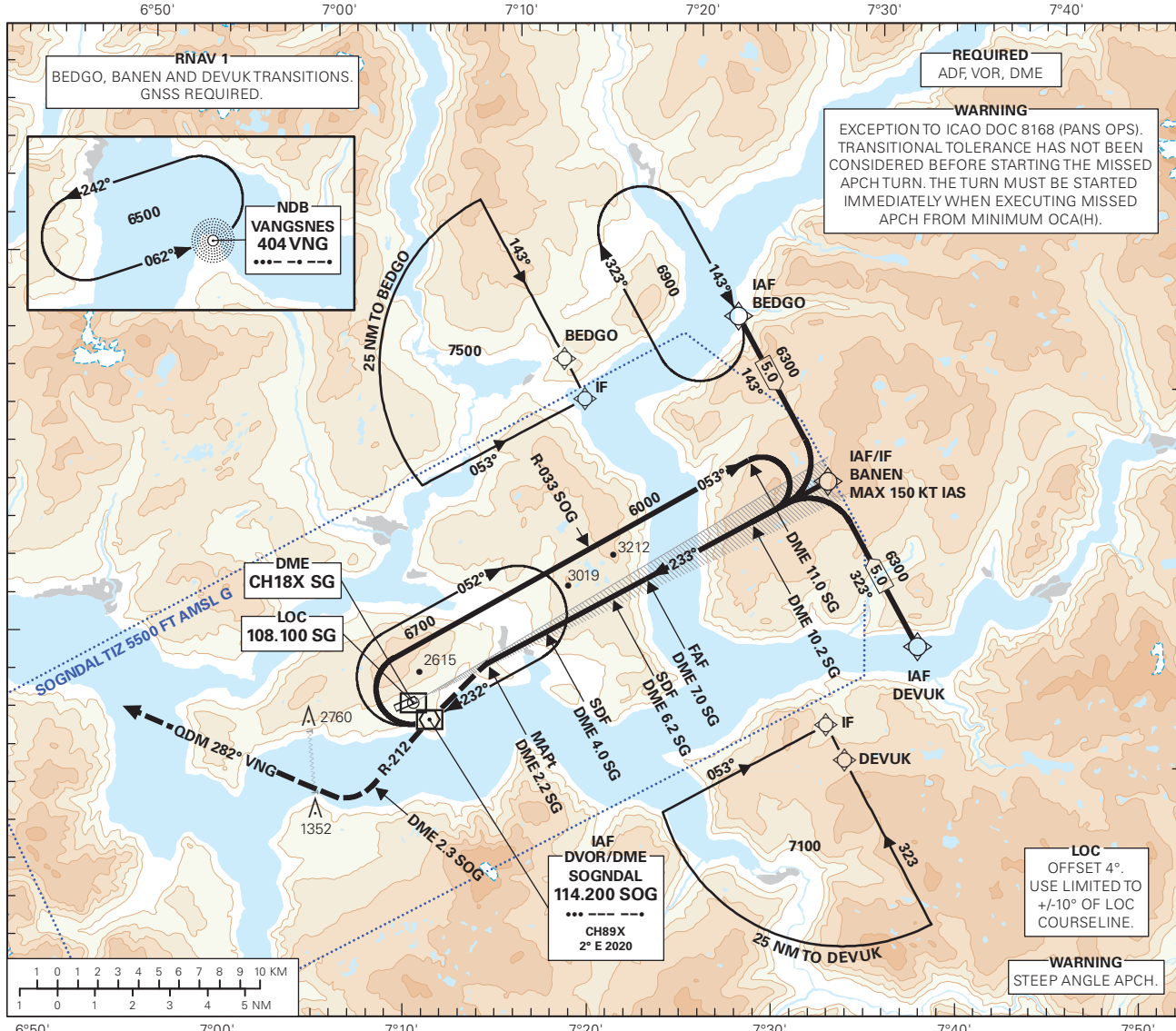
HAUKÅSEN

LOC RWY 24



ATIS: 131.255	AD ELEV: 1633
AFIS: 119.305	THR ELEV: 1633
	DIST IN NM
	HGT RELATED TO THR RWY 24
	ELEV, ALT AND HGT IN FT
	CIRCLING HGT RELATED TO AD ELEV
	BEARINGS ARE MAGNETIC - VAR 2° E (2020)

TRANSITION ALTITUDE
7000



REQUIRED
ADF, VOR, DME

WARNING
EXCEPTION TO ICAO DOC 8168 (PANS OPS). TRANSITIONAL TOLERANCE HAS NOT BEEN CONSIDERED BEFORE STARTING THE MISSED APCH TURN. THE TURN MUST BE STARTED IMMEDIATELY WHEN EXECUTING MISSED APCH FROM MINIMUM OCA(H).

LOC
OFFSET 4°. USE LIMITED TO +/-10° OF LOC COURSELINE.

WARNING
STEEP ANGLE APCH.

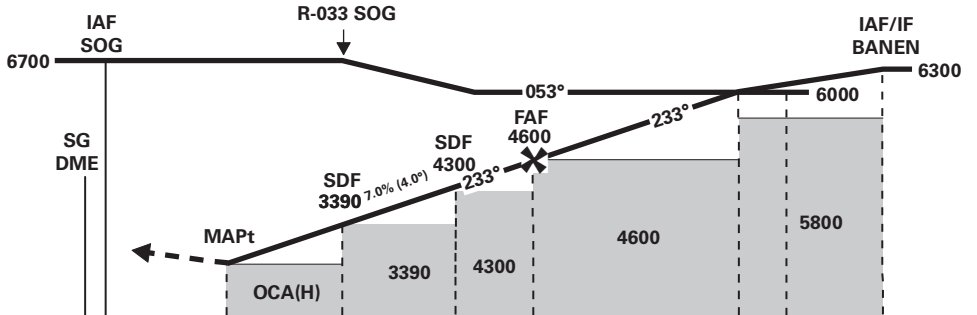
DIST TO SG	10	9	8	7	6	5	4	3
ALT (HGT)	-	-	-	4650 (3017)	4230 (2597)	3800 (2167)	3380 (1747)	2950 (1317)

PROCEDURE OFFSET: 4°

MISSED APCH:
TURN LEFT IMMEDIATELY DCT SOG. CONTINUE ON R-212 SOG TO DME 2.3 AFTER SOG. INTERCEPT AND PROCEED ON QDM 282° VNG TO VNG. ENTER VNG HLDG CLIMBING TO 6500.

NOTE:
MAX 130 KT IAS IN MISSED APCH TURN. NO TURN BEFORE MAPt.

STEEP ANGLE APCH (4.0°).
VPA NOT CONSISTENT WITH VASIS (4.5°).



DME SG	→	0	2.2	4.0	6.2	7.0	10.2	11.0	12.5				
THR	→	0	2.1	3.9	6.1	6.9	10.1	11.0	12.4				
CAT OF ACFT		A	B	C	D	FINAL APCH	DIST FAF - MAPt: 4.8						
OCA(H) STRAIGHT - IN	LOC 2.5%*	2700 (1067)		-	-	SPEED	KT	70	90	100	120	130	
	LOC 4.0%*	2670 (1037)	2670 (1037)	-	-		TIME	MIN:SEC	04:07	03:12	02:53	02:24	02:13
	LOC 5.0%*	2650 (1017)	2650 (1017)	-	-		ROD	FT/MIN	500	640	710	855	925

NOTE: CIRCLING S OF AD ONLY. *MNM MISSED APCH CLIMB GRADIENT.

CHANGES: FREQUENCIES: