

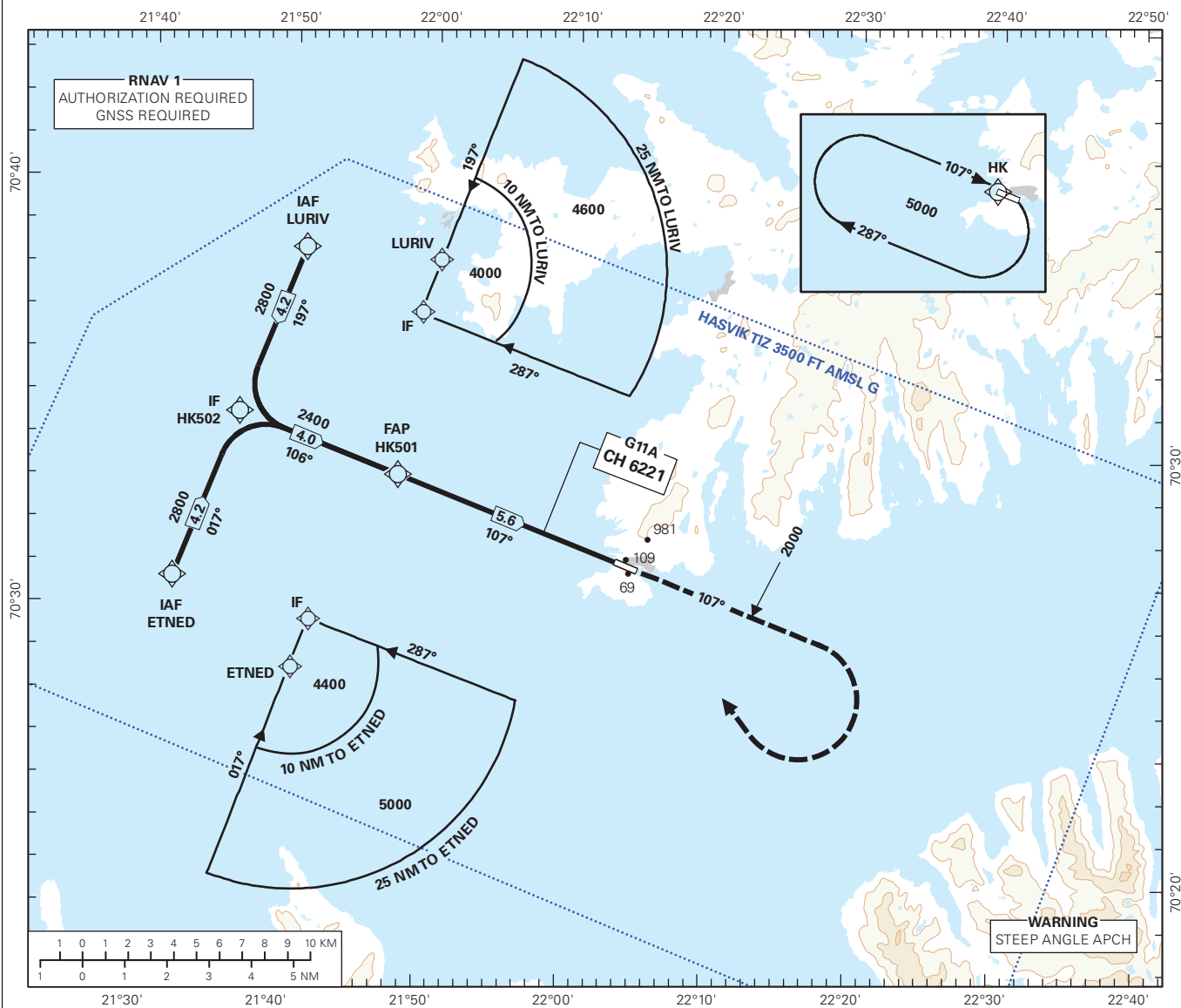
INSTRUMENT APPROACH CHART - ICAO PLAN VIEW SCALE: 1:300 000

ATIS: 132.305	AD ELEV: 23		
APP: 126.705	THR ELEV: 21	DIST IN NM	
AFIS: 119.905	HGT RELATED TO THR RWY 11	ELEV, ALT AND HGT IN FT	
CIRCLING HGT RELATED TO AD ELEV			TRANSITION ALTITUDE 7000
BEARINGS ARE MAGNETIC - VAR: 12° E (2020)			

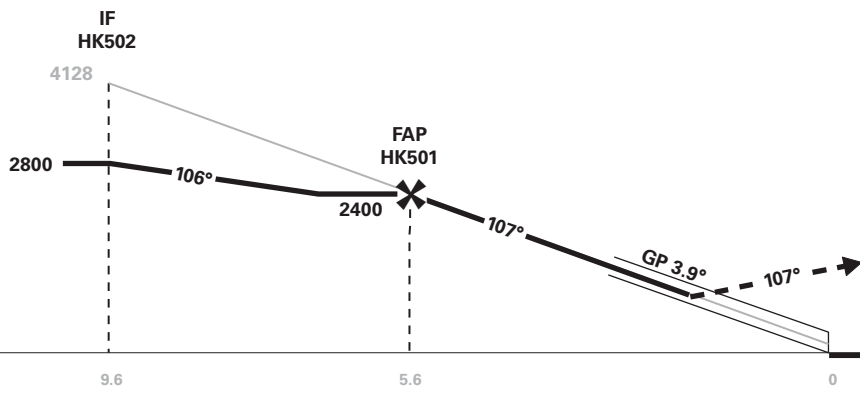
HASVIK

HASVIK

GLS RWY 11



DIST TO THR	8	7	6	5	4	3	2	1
ALT (HGT)	-	-	-	2163 (2142)	1741 (1720)	1321 (1300)	902 (881)	485 (464)



MISSED APCH:
CLIMB ON COURSE 107°. AT 2000 TURN RIGHT DCT HK. ENTER HK HLDG CLIMBING TO 5000.

NOTE:
GP ANGLE (3.9°) NOT CONSISTENT WITH VASIS ANGLE (4.5°).

TCH 49

CAT OF ACFT		A	B	C	D
OCA(H) SCAT - I	2.5%*	917 (896)	935 (914)	-	-
	3.0%*	613 (592)	631 (610)	-	-
	4.0%*	261 (240)	279 (258)	-	-
CIRCLING		920 (897)	940 (917)	-	-

NOTE: CIRCLING S OF AD ONLY. *MNM MISSED APCH CLIMB GRADIENT.

ATS AIRSPACE CLASSIFICATION: REF ENR 1.4.

CHANGES: FREQUENCIES, EDITORIALS.