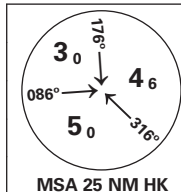
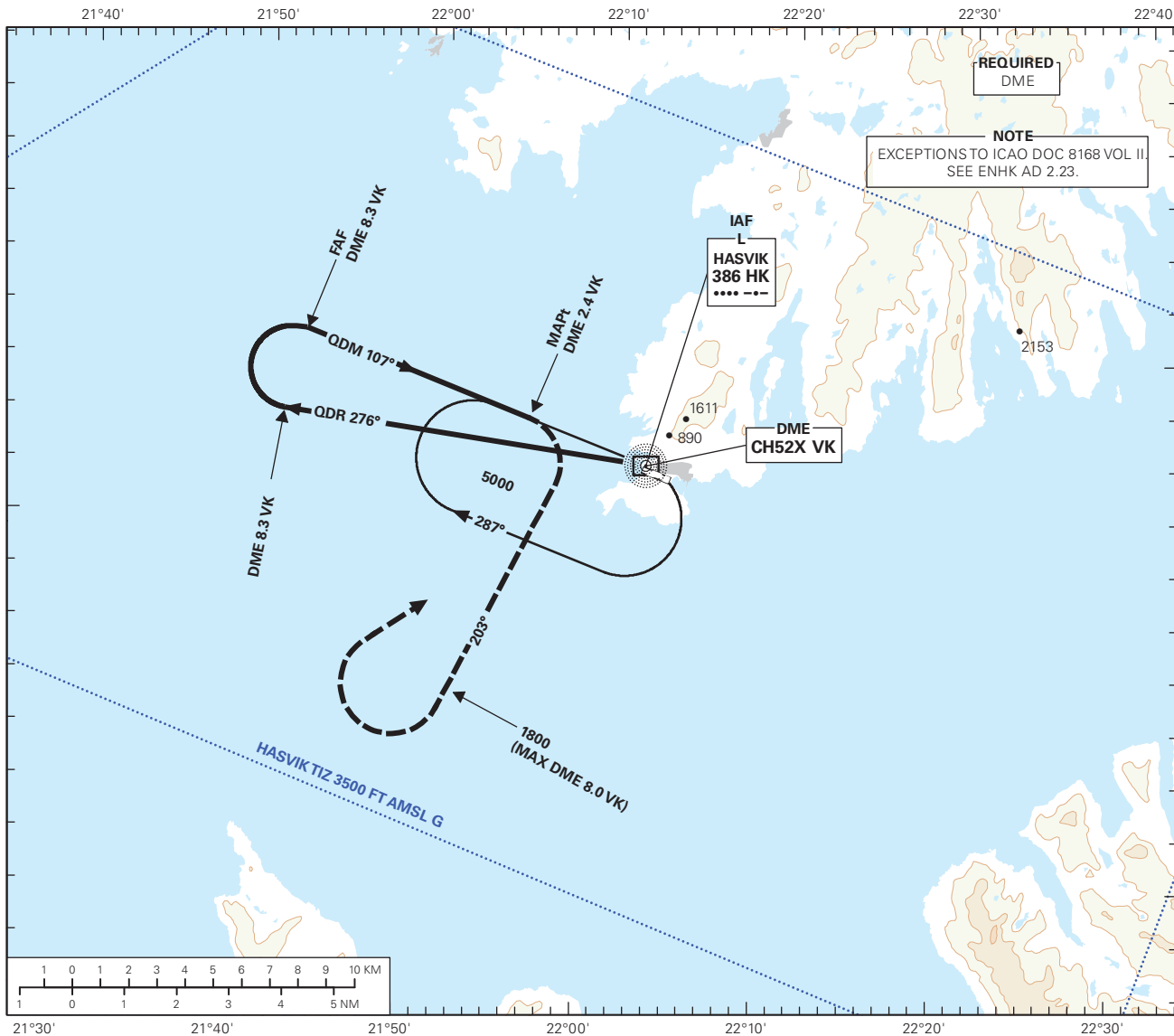


INSTRUMENT APPROACH CHART - ICAO PLAN VIEW SCALE: 1:250 000

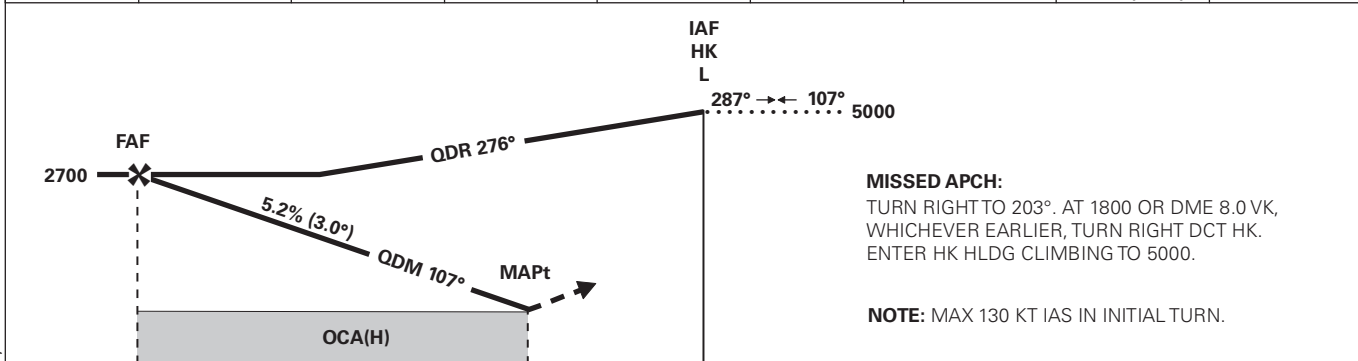


ATIS: 132.305	AD ELEV: 23	
APP: 126.705	THR ELEV: 21	DIST IN NM
AFIS: 119.905	HGT RELATED TO THR RWY 11	ELEV, ALT AND HGT IN FT
CIRCLING HGT RELATED TO AD ELEV		
BEARINGS ARE MAGNETIC - VAR 12 ° E (2020)		

HASVIK
HASVIK
NDB RWY 11
 TRANSITION ALTITUDE
7000



DIST TO VK	10	9	8	7	6	5	4	3
ALT (HGT)	-	-	2610 (2589)	2290 (2269)	1980 (1959)	1660 (1639)	1340 (1319)	1020 (999)



8.3	2.4	0	
8.3	2.4	0	

CAT OF ACFT	A	B	C	D
	OCA(H) STRAIGHT - IN	840 (819)	-	-
CIRCLING	890 (867)	-	-	-

NOTE: CIRCLING S OF AD ONLY.

CHANGES: FREQUENCIES, EDITORIALS.