

INSTRUMENT APPROACH CHART - ICAO PLAN VIEW SCALE: 1:350 000

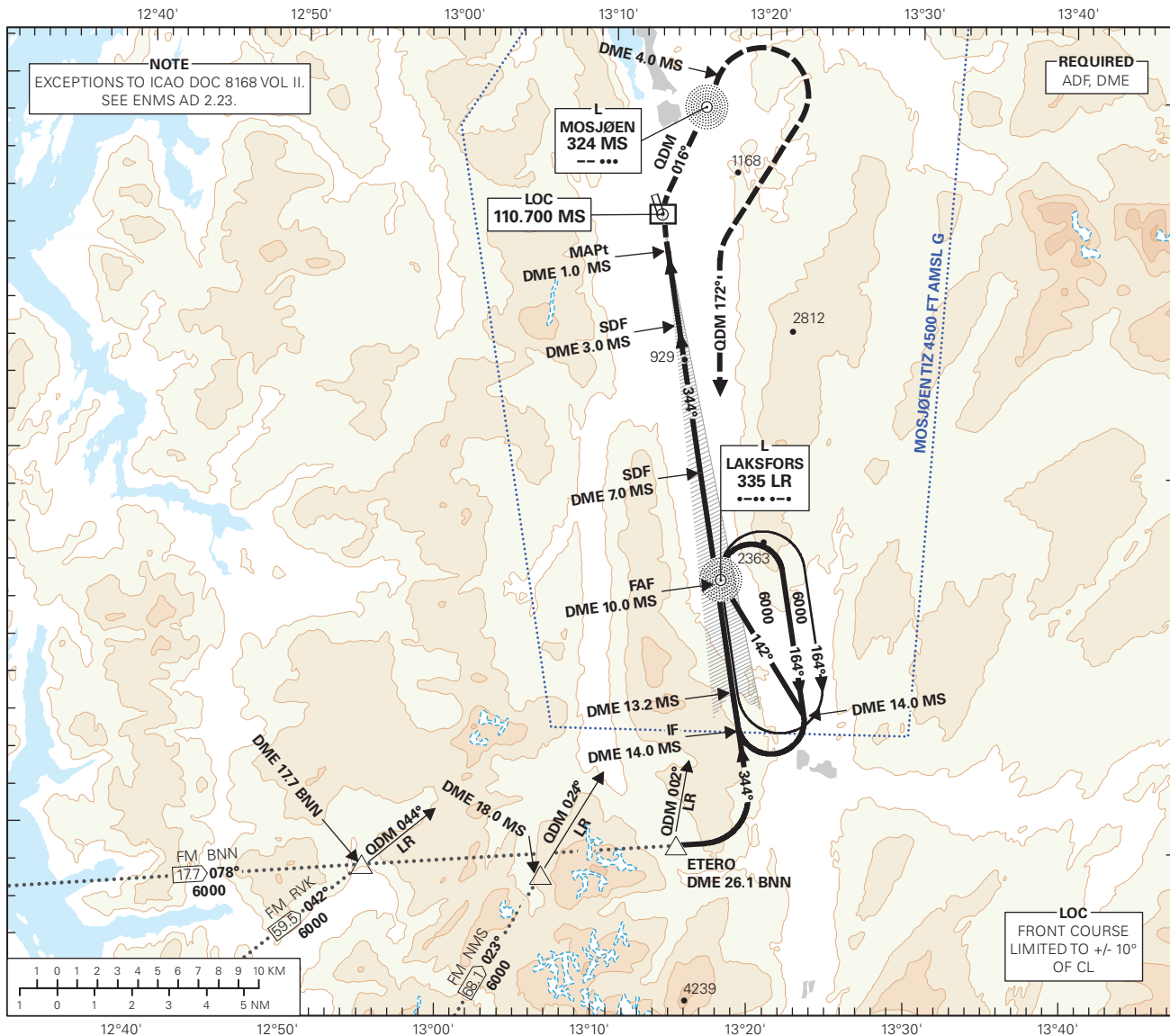
MOSJØEN

KJÆRSTAD

LOC RWY 33

TRANSITION ALTITUDE
7000

	APP: 127.905	AD ELEV: 241	
	AFIS: 123.405	THR ELEV: 241	DIST IN NM
	VDF: 123.405	HGT RELATED TO THR RWY 33	ELEV, ALT AND HGT IN FT
	CIRCLING HGT RELATED TO AD ELEV		
BEARINGS ARE MAGNETIC - VAR 6° E (2020)			



ATS AIRSPACE CLASSIFICATION: REF ENR 1.4.

DIST TO MS	10	9	8	7	6	5	4	3
ALT (HGT)	4010 (3769)	3640 (3399)	3270 (3029)	2900 (2659)	2530 (2289)	2160 (1919)	1790 (1549)	1420 (1179)

MISSED APCH:

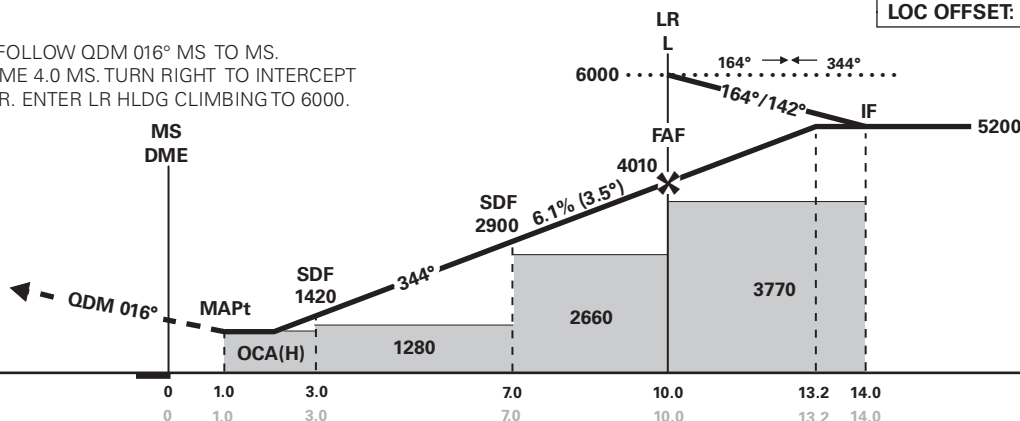
TURN RIGHT TO INTERCEPT AND FOLLOW QDM 016° MS TO MS. PROCEED ON QDR 016° MS TO DME 4.0 MS. TURN RIGHT TO INTERCEPT AND FOLLOW QDM 172° LR TO LR. ENTER LR HLDG CLIMBING TO 6000.

NOTE:

MAX 140 KT IAS IN MISSED APCH TURNS.

NO TURN BEFORE MAPt.

PROFILE VIEW RELATED TO OCA(H) 4.0% AFTER DME 7.0 MS.



DME (MS)	→	0	1.0	3.0	7.0	10.0	13.2	14.0
THR	→	0	1.0	3.0	7.0	10.0	13.2	14.0
CAT OF ACFT			A	B	C	D		
OCA(H) STRAIGHT - IN	2.5%*		1510 (1269)	1550 (1309)	-	-		
	4.0%*			1130 (889)	-	-		
CIRCLING			1510 (1269)	2820 (2579)	-	-		

NOTE: CIRCLING E OF AD ONLY. *MNM MISSED APCH GRADIENT.

CHANGES: FREQUENCIES, EDITORIALS.